

School District of Indian River County

STATE OF THE SCHOOLS REPORT

A supporting document for the
Long-Range Facilities Master Plan



DRAFT November 2020





TABLE OF CONTENTS

Introduction & Purpose	3
Enrollment & Demographics	4
Historical & Projected Enrollment	
School Boundaries + Feeder Patterns	
Overall Enrollment Profile	
Housing & Population	
Facilities	8
Summary of Data	
Capacity & Utilization	
Condition	
	11
African American Achievement	
	12
Financial Profile of the District	
Current Capital Improvement Plan	
Debt Service Summary	
School Profiles	15
Live/Attend Analysis	
Boundary Maps	
School Profiles	

INTRODUCTION

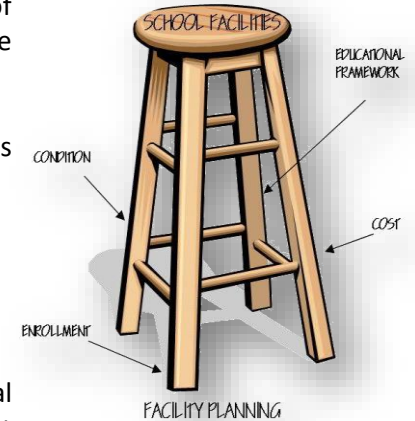
Approach to Facilities Master Planning

Comprehensive facility planning requires an iterative process essential to maintaining the short and long-term well-being of a District's infrastructure. There is no 'boiler plate' approach to planning as every school district has a unique set of characteristics that set it apart from others. However, there are commonalities in the types of data and information that should be used to make both fact based and stakeholder-based decisions when the plan is developed.

We often use the analogy of a four-legged stool in which the seat represents the facilities, and that seat is supported by four legs of equal importance. The legs include:

- Educational Framework: Curriculum, Programs, Delivery Models, and Policy
- Demographics: Enrollment and the data that impact enrollment
- Condition: Physical Condition and Educational Adequacy
- Funding: Ability to fund and sources of funding

Though one of the legs of the stool often times necessitates the call for a plan, each of these legs carries an equal amount of importance when developing a facilities master plan. Add the element of stakeholder involvement that reflects the culture and values of the District and that sets the foundation for a successful planning process.



PURPOSE

Purpose of a Facilities Master Plan

The purpose of a facilities master plan is to create a road map for both short and long-term capital and maintenance needs of a District's educational and support facilities. The master plan should account for all facilities in the District's portfolio, as all are connected in a way in which the actions to one facility will have a domino impact as to what will happen to the next. Experience tells us that it is unlikely that any school district can fund all of the facilities needs identified in the plan. Therefore, a plan becomes an exercise of identifying all of the needs and utilizing a prioritization approach based on the data, educational framework, stakeholder input and the unique culture of the District.

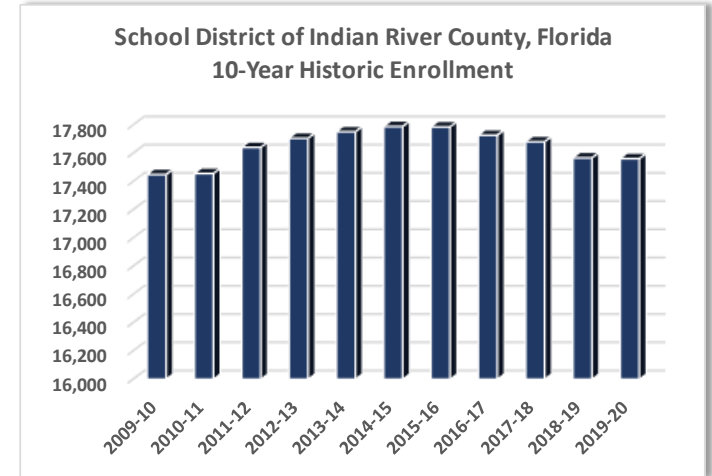


ENROLLMENT + DEMOGRAPHICS

Historic Enrollment

1.2% ↓ **5Yr Historic Enrollment Trend**

+100 ↑ **1Yr Rise in Kindergarten Enrollment**



Year	KG	1st	2nd	3rd	4th	5th	6th	7th	8th	9th	10th	11th	12th	Total
2009-10	1,298	1,364	1,319	1,350	1,312	1,322	1,365	1,343	1,340	1,590	1,338	1,271	1,238	17,450
2010-11	1,357	1,322	1,362	1,315	1,308	1,326	1,362	1,383	1,355	1,532	1,423	1,209	1,203	17,457
2011-12	1,385	1,402	1,352	1,390	1,299	1,325	1,317	1,375	1,413	1,539	1,389	1,304	1,152	17,642
2012-13	1,315	1,437	1,362	1,416	1,324	1,302	1,356	1,338	1,397	1,559	1,402	1,267	1,232	17,707
2013-14	1,306	1,377	1,429	1,449	1,331	1,343	1,323	1,396	1,375	1,611	1,387	1,236	1,190	17,753
2014-15	1,313	1,353	1,376	1,495	1,362	1,377	1,345	1,332	1,416	1,546	1,462	1,264	1,149	17,790
2015-16	1,247	1,342	1,355	1,467	1,425	1,389	1,381	1,379	1,373	1,514	1,398	1,290	1,227	17,787
2016-17	1,267	1,270	1,336	1,460	1,345	1,388	1,420	1,383	1,408	1,511	1,436	1,277	1,227	17,728
2017-18	1,200	1,324	1,274	1,409	1,377	1,395	1,403	1,399	1,359	1,512	1,411	1,362	1,257	17,682
2018-19	1,179	1,243	1,311	1,396	1,279	1,370	1,387	1,417	1,383	1,526	1,447	1,313	1,317	17,568
2019-20	1,279	1,222	1,259	1,406	1,296	1,304	1,351	1,403	1,433	1,606	1,398	1,373	1,232	17,562

Indicates Trends of Higher Enrollment

Indicates Trends of Lower Enrollment

Source: SDIRC



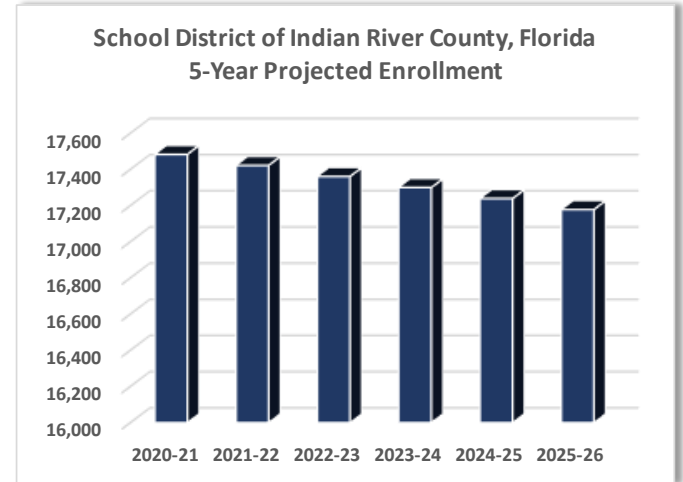
ENROLLMENT + DEMOGRAPHICS

Projected Enrollment

1.7%  **5Yr Continued Projected Decline**



Reversing Trends from Elementary Enrollment Rise to Secondary Rise



Year	KG	1st	2nd	3rd	4th	5th	6th	7th	8th	9th	10th	11th	12th	Total
2020-21	1,227	1,200	1,242	1,372	1,247	1,313	1,361	1,421	1,420	1,594	1,421	1,384	1,282	17,482
2021-22	1,225	1,173	1,220	1,353	1,215	1,294	1,351	1,429	1,429	1,613	1,422	1,404	1,292	17,421
2022-23	1,222	1,147	1,199	1,335	1,182	1,275	1,342	1,437	1,439	1,633	1,424	1,424	1,302	17,360
2023-24	1,220	1,120	1,177	1,316	1,150	1,256	1,333	1,445	1,448	1,653	1,425	1,444	1,312	17,299
2024-25	1,218	1,093	1,155	1,297	1,118	1,238	1,323	1,454	1,458	1,673	1,426	1,464	1,322	17,238
2025-26	1,215	1,067	1,133	1,279	1,085	1,219	1,314	1,462	1,467	1,693	1,427	1,485	1,332	17,177

Indicates Trends of Higher Enrollment

Indicates Trends of Lower Enrollment

Source: SDIRC

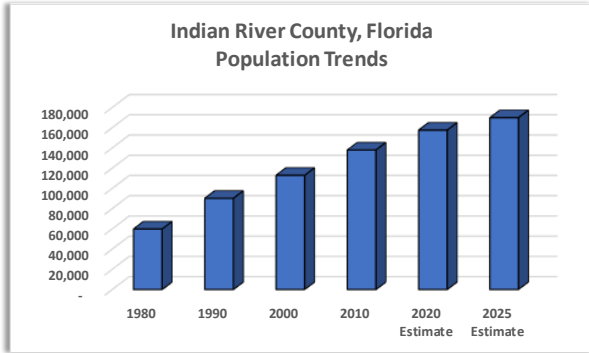


Indian River County, FL Demographic Data

Source: DataUSA.io

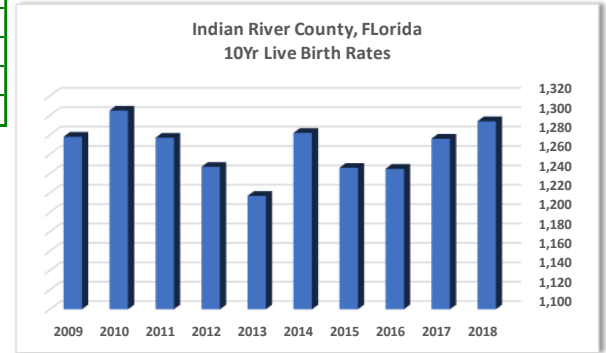
Population Trends	
Indian River County, FL	
Year	Population
1980	59,896
1990	90,208
2000	112,947
2010	138,028
2020 Estimate	157,621
2025 Estimate	169,963

Population Trends



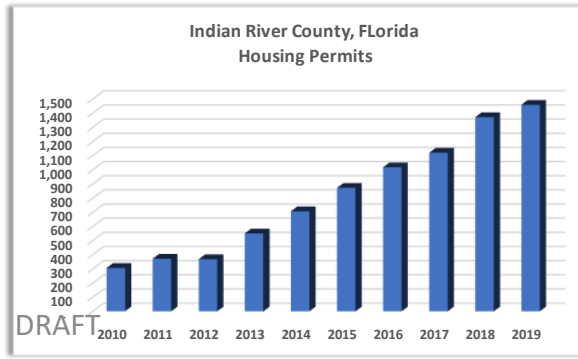
Total Resident Live Births Single Year Rates	
Indian River County, FL	
Year	# of Births
2018	1,294
2017	1,276
2016	1,245
2015	1,246
2014	1,282
2013	1,217
2012	1,247
2011	1,277
2010	1,305
2009	1,278

Birth Rates



Housing Trends

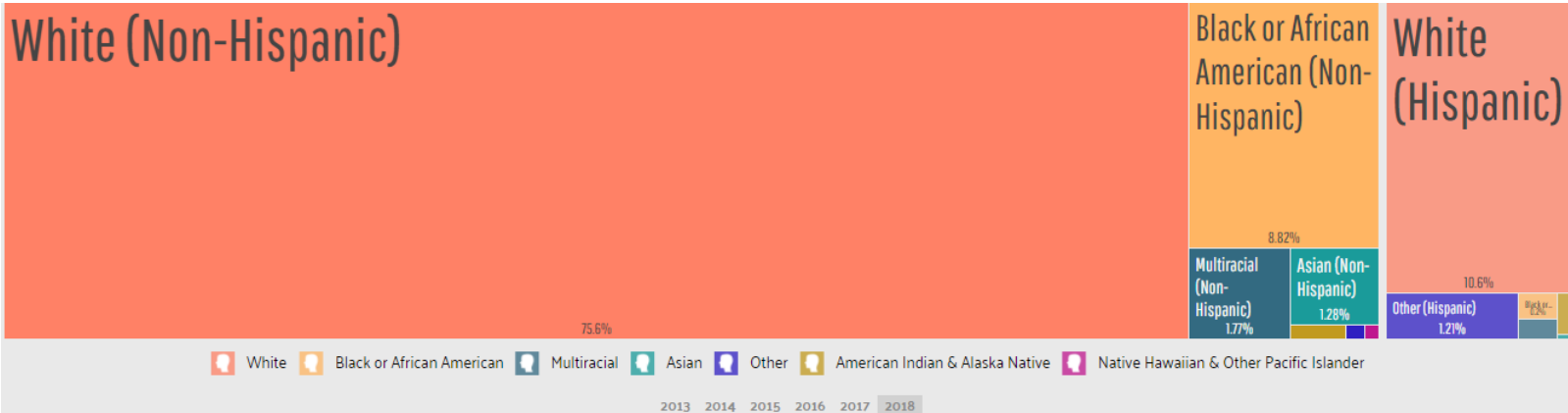
Housing Permits	
Indian River County, FL	
Year	# of Permits
2019	1,459
2018	1,372
2017	1,121
2016	1,018
2015	873
2014	707
2013	551
2012	369
2011	372
2010	307



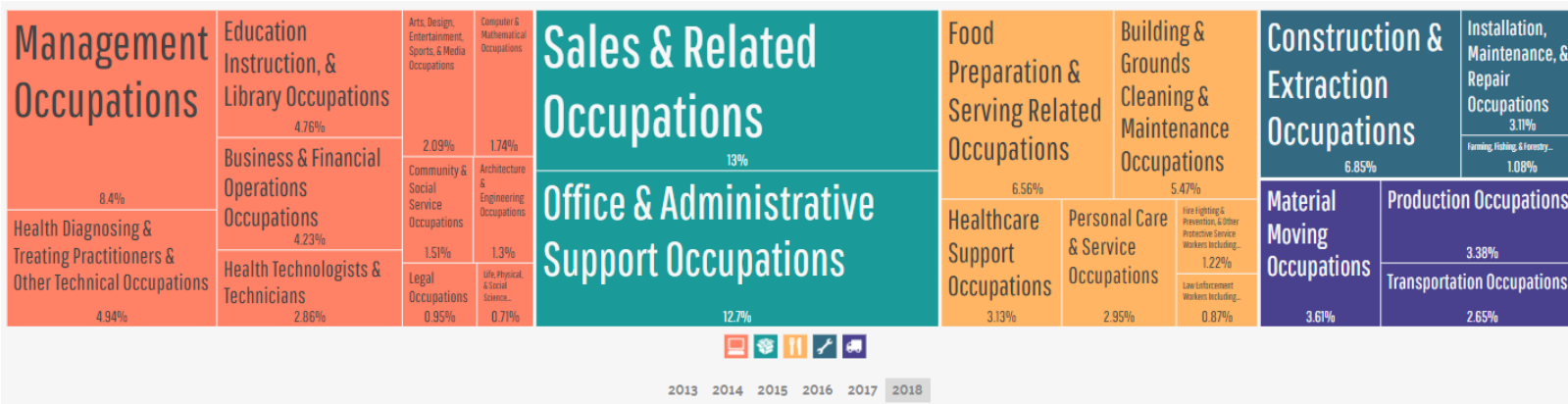
Indian River County, FL Demographic Data

Source: DataUSA.io

Race & Ethnicity



Employment Trends



FACILITY DATA

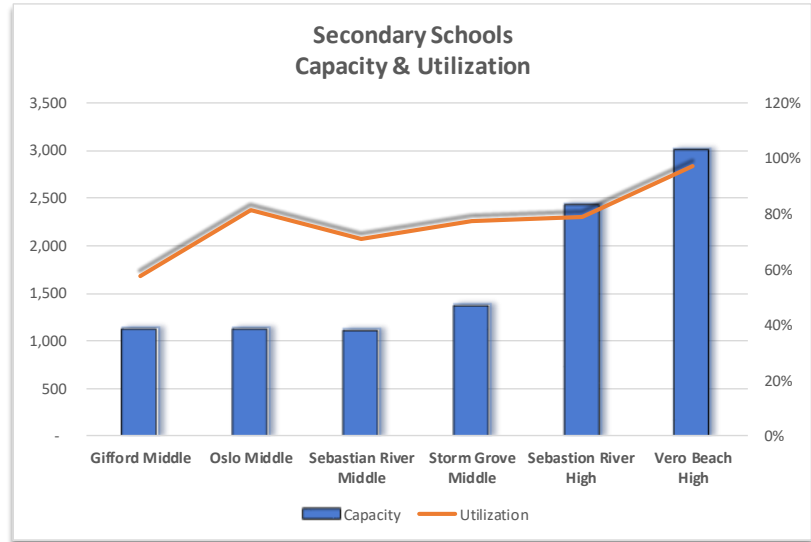
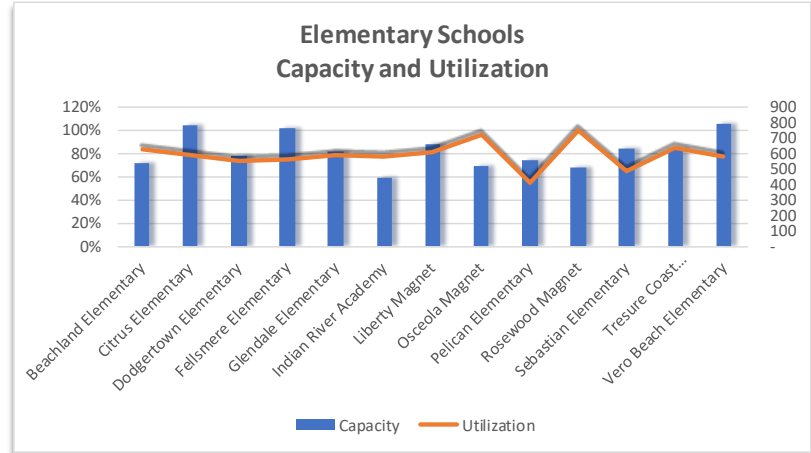
	Year Built/ Additions	Sq. Footage	FISH Capacity	SDIRC Capacity Permanent	Sq. Ft. Per Student	SDIRC Concretable Capacity	SDIRC Portable Capacity	2019-20 Enrollment	2020-2021 Enrollment	Utilization	# Portables	Condition Index
ELEMENTARY SCHOOLS												
Beachland Elementary	1987, 2017	106,671	580	536	199.0	44	-	487		84%	-	35%
Citrus Elementary	1967, 2016	101,483	892	786	129.1	106	-	707		79%	-	40%
Dodgertown Elementary	1967, 1988	117,689	584	584	201.5	-	-	432		74%	-	44%
Fellsmere Elementary	1982, 2014	106,965	787	769	139.1	18	-	594		75%	-	41%
Glendale Elementary	1987	75,958	702	612	124.1	72	18	557		79%	1	52%
Indian River Academy	1987	65,757	604	442	148.8	162	-	468		77%	-	46%
Liberty Magnet	2005	105,793	666	666	158.8	-	-	543		82%	-	35%
Osceola Magnet	1982, 2004	81,818	557	517	158.3	40	-	536		96%	-	52%
Pelican Island Elementary	1987	73,562	654	556	132.3	98	-	357		55%	-	52%
Rosewood Magnet	1957	84,042	543	515	163.2	28	-	543		100%	-	51%
Sebastian Elementary	1984	85,696	637	637	134.5	-	-	411		65%	-	42%
Tresure Coast Elementary	2002, 2014	111,100	799	637	174.4	162	-	681		85%	-	39%
Vero Beach Elementary	2012	110,460	796	796	138.8	-	-	616		77%	-	35%
MIDDLE SCHOOLS												
Gifford Middle	1951, 1954, 1994	135,033	1,022	1,136	118.9	-	-	653		57%	-	50%
Oslo Middle	1984	152,045	1,026	1,140	133.4	-	-	926		81%	-	45%
Sebastian River Middle	1977	153,587	1,145	1,119	137.3	-	154	905		71%	7	49%
Storm Grove Middle	2009	167,794	1,243	1,382	121.4	-	-	1,071		77%	-	37%
HIGH SCHOOL												
Sebastian River High	1993, 2012	355,741	2,318	2,440	145.8	-	-	1,925		79%	-	49%
Vero Beach High	1964, 2007, 2008	366,713	2,918	3,012	121.8	-	-	2,935		97%	-	45%
Vero Beach Freshman Center	1951, 1956, 1978	137,472										
Other												
Alternative Center	2004, 2005, 2013, 2018	8,080	328	328	-	-	25	-		0%	1	
Wabasso School	1924, 1964, 2010	37,883	81	81	-	-	10	78		86%	1	
Virtual School		-	-	-	-	-	-					
Charter Schools												
Imagine South								887			-	
Indian River Charter High								689			-	
North Central Charter ES								382			-	
Sebastian Charter Jr. High								265			-	
St. Peters Academy								145			-	



FACILITY DATA

Capacity + Utilization

	FISH Capacity	SDIRC Capacity Permanent	Sq. Ft. Per Student	2019-20 Enrollment	2020-2021 Enrollment	Utilization
ELEMENTARY SCHOOLS						
Beachland Elementary	580	536	199.0	487		84%
Citrus Elementary	892	786	129.1	707		79%
Dodgertown Elementary	584	584	201.5	432		74%
Fellsmere Elementary	787	769	139.1	594		75%
Glendale Elementary	702	612	124.1	557		79%
Indian River Academy	604	442	148.8	468		77%
Liberty Magnet	666	666	158.8	543		82%
Osceola Magnet	557	517	158.3	536		96%
Pelican Elementary	654	556	132.3	357		55%
Rosewood Magnet	543	515	163.2	543		100%
Sebastian Elementary	637	637	134.5	411		65%
Tresure Coast Elementary	799	637	174.4	681		85%
Vero Beach Elementary	796	796	138.8	616		77%
MIDDLE SCHOOLS						
Gifford Middle	1,022	1,136	118.9	653		57%
Oslo Middle	1,026	1,140	133.4	926		81%
Sebastian River Middle	1,145	1,119	137.3	905		71%
Storm Grove Middle	1,243	1,382	121.4	1,071		77%
HIGH SCHOOLS						
Sebastian River High	2,318	2,440	145.8	1,925		79%
Vero Beach High	2,918	3,012	121.8	2,935		97%
Vero Beach Freshman Center						



FACILITY DATA

Physical Condition Summary

SDIRC Facilities	Year/Years Built	Age of Bldgs.	Original Age	Square Footage Buildings/Walkway	Replacement Cost	Weighted Condition Score	Weighted Condition Average	Weighted Condition Index
Alternative Education	2004-2005-2013-2018	16,15,7,2	16	8,080	\$ 1,897,992	415	6.49	35%
Beachland Elementary	1987-2017	32, 3	32	106,671	\$ 24,470,327	387	5.73	40%
Citrus Elementary	1967-2016	53,4	53	101,483	\$ 23,280,200	361	5.67	44%
Dodgertown Elementary	1967-1998	53,22	53	117,689	\$ 26,997,857	327	5.10	49%
ESE Building	1951-1992	69,28	69	6,986	\$ 1,641,011	333	5.76	48%
Fellsmere Elementary	1982-2014	38, 6	38	106,965	\$ 24,537,771	379	5.89	41%
Freshman Learning Center	1951-1956-1978	69,64,42	69	137,472	\$ 32,292,173	335	5.26	48%
Gifford Middle School	1951-1954-1994	69,66,26	69	135,033	\$ 30,017,836	317	4.91	50%
Glendale Elementary	1987	33	33	75,958	\$ 17,424,765	309	4.71	52%
Indian River Academy	1987	33	33	65,757	\$ 15,084,656	348	5.23	46%
Liberty Magnet	2005	15	15	105,793	\$ 24,268,914	418	6.44	35%
Osceola Magnet	1982-2004	38,16	38	81,818	\$ 18,769,049	308	4.87	52%
Oslo Middle School	1984	36	36	152,045	\$ 33,799,604	351	5.31	45%
Pelican Island Elementary	1981	39	39	73,562	\$ 16,875,123	306	4.80	52%
Rosewood Magnet	1957	63	63	84,042	\$ 19,279,235	316	4.94	51%
Sebastian Elementary	1984	36	36	85,696	\$ 19,658,662	369	5.70	42%
Sebastian Rv. Middle	1977	43	43	153,587	\$ 34,142,390	343	5.37	46%
Sebastian Rv. High School	1993-2012	27,8	27	355,741	\$ 83,563,561	327	4.93	49%
Storm Grove Middle	2009	11	11	167,794	\$ 37,300,606	403	6.09	37%
Treasure Coast Elementary	2002-2014	18,6	18	111,100	\$ 25,486,340	391	6.11	39%
Vero Beach Elementary	2012	8	8	110,460	\$ 25,339,524	419	6.46	35%
Vero Beach High School	1964-2007-2008	56,13,12	56	366,713	\$ 86,140,884	355	5.63	45%
Wabasso School	1924-1964-2010	96,56,10	96	37,883	\$ 8,898,717	275	4.14	57%
				2,934,189	\$ 641,890,617			



GOOD

FAIR

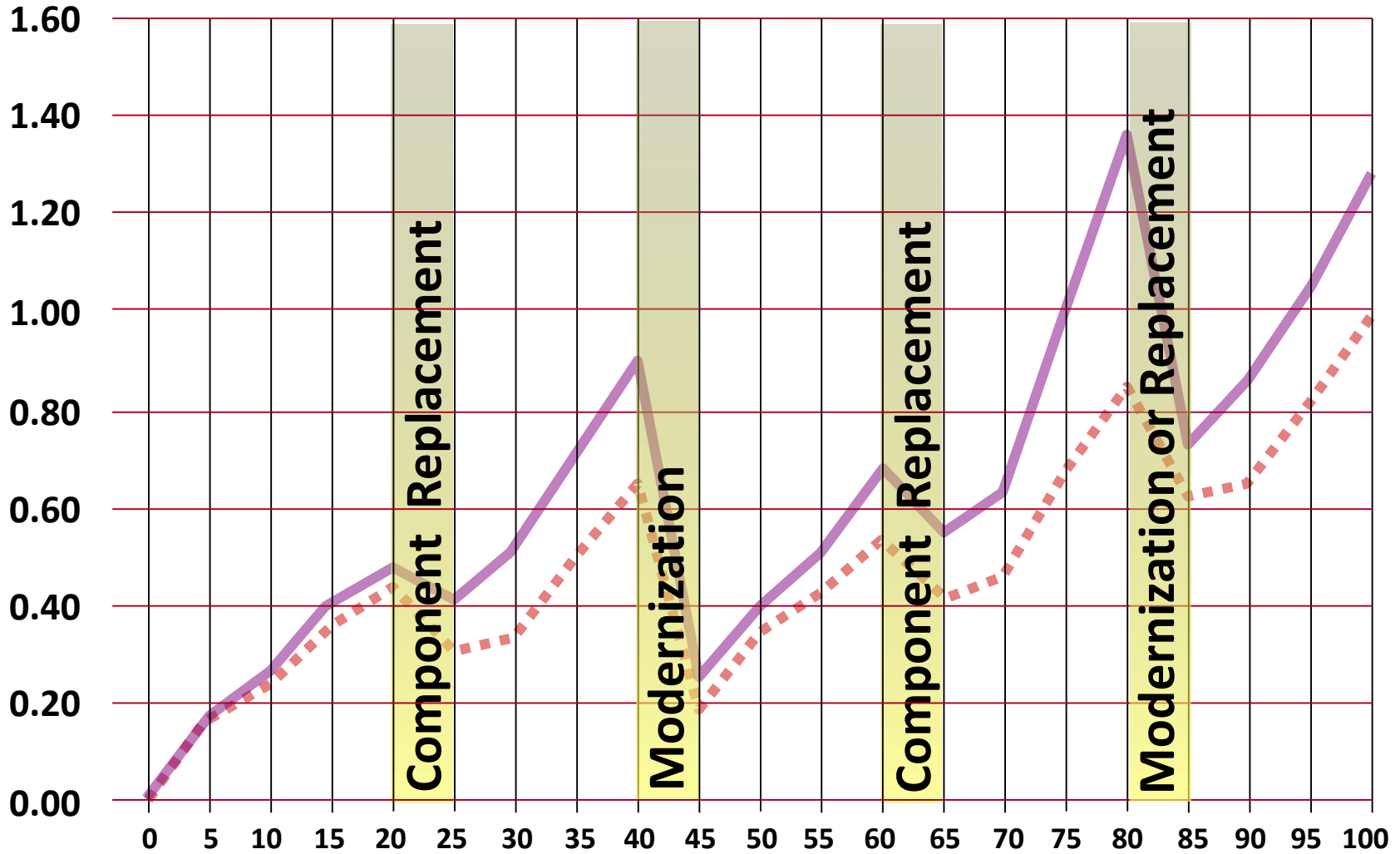
MODERATE

POOR



DRAFT

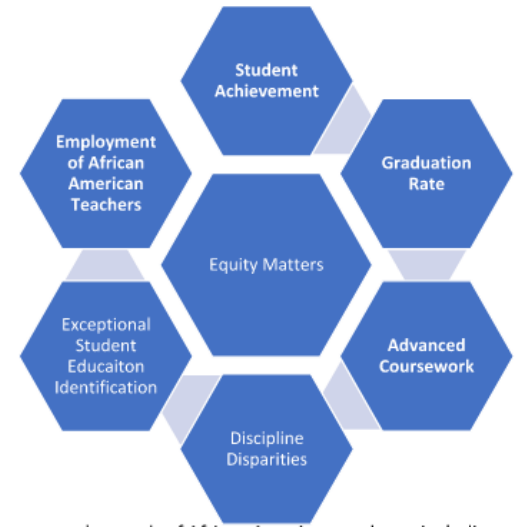
Capital/Maintenance Typical Life Cycle



Facility Modernization Cost over Time

African American Achievement Plan

The goal of the School District's African American Achievement Plan shall be to eliminate the achievement gap as compared to White students. Given this, the Plan identifies barriers to the academic achievement of African American students; lists the strategies, procedures, and/or programs that will be implemented to improve the academic achievement of African American students and address the identified barriers; and sets measurable goals for the improvement of African American academic achievement. The School District's African American Achievement Plan also addresses discipline disparities observed among of African American students and the assignment of African American students to special programs, such as the Exceptional Student Education (ESE) and Alternative Education programs, including whether such assignments exceed state and District averages for other groups. Other purposes of this Plan include the hiring of a diverse workforce, the inclusion of culturally responsive lessons and materials, the celebration of diverse learners and families, and the fostering of a growth mindset



Goal 1: Improve Academic Improvement of African American Students

Closing the Achievement Gap

Improved Graduation Rates

Increase the Percentage of African Americans enrolled in Advanced Coursework

Goal 2: Reduce Disparities in Discipline & Alternative Disciplinary Placements

Decrease the Percentage of disciplinary referrals and resulting classroom removals received by African American students

Goal 3: Reduce Disproportionality in ESE Identification

Reduce Specific Learning Disability (SLD) eligibility for African American students

Goal 4: Increase Employment of African American Teachers

Increase Number of African American Teachers by 2% each year until it meets or exceeds percentage of African American Students



DISTRICT CAPITAL FINANCIAL PROFILE

Capital Improvement Plan 2020 - 2025

Annually, prior to the adoption of the District school budget, each school board must prepare a tentative district facilities work program that includes a schedule of major repair and renovation projects, necessary to maintain the educational and ancillary facilities in the District. The next two pages contain the current and projected list.

Item	2020 - 2021 Actual Budget	2021 - 2022 Projected	2022 - 2023 Projected	2023 - 2024 Projected	2024 - 2025 Projected	Total
HVAC	\$0	\$5,250,000	\$900,000	\$2,870,000	\$3,275,000	\$12,295,000
Locations:	BEACHLAND ELEMENTARY, CITRUS ELEMENTARY, FELLSMERE ELEMENTARY, GIFFORD MIDDLE, GLENDALE ELEMENTARY, INDIAN RIVER ACADEMY, LIBERTY MAGNET, OSCEOLA MAGNET SCHOOL (NEW), OSLO MIDDLE, PELICAN ISLAND ELEMENTARY, ROSEWOOD ELEMENTARY, SEBASTIAN ELEMENTARY, SEBASTIAN RIVER MIDDLE, SEBASTIAN RIVER SENIOR HIGH, STORM GROVE MIDDLE SCHOOL, TRANSPORTATION DEPARTMENT, VERO BEACH SENIOR HIGH					
Flooring	\$500,000	\$592,840	\$588,000	\$350,000	\$350,000	\$2,380,840
Locations:	Administration Building, ALTERNATIVE CENTER FOR EDUCATION, BEACHLAND ELEMENTARY, CITRUS ELEMENTARY, DISTRICT SERVICES, DODGERTOWN ELEMENTARY, FELLSMERE ELEMENTARY, GIFFORD MIDDLE, GLENDALE ELEMENTARY, INDIAN RIVER ACADEMY, LIBERTY MAGNET, OSCEOLA MAGNET SCHOOL (NEW), OSLO MIDDLE, PELICAN ISLAND ELEMENTARY, ROSEWOOD ELEMENTARY, SEBASTIAN ELEMENTARY, SEBASTIAN RIVER MIDDLE, SEBASTIAN RIVER SENIOR HIGH, STORM GROVE MIDDLE SCHOOL, SUPPORT SERVICE COMPLEX, TRANSPORTATION DEPARTMENT, TREASURE COAST ELEMENTARY, TREASURE COAST TECHNICAL COLLEGE, VERO BEACH ELEMENTARY, VERO BEACH SENIOR HIGH, WABASSO SCHOOL					
Roofing	\$1,019,930	\$145,000	\$145,000	\$1,817,848	\$495,000	\$3,622,778
Locations:	Administration Building, ALTERNATIVE CENTER FOR EDUCATION, BEACHLAND ELEMENTARY, CITRUS ELEMENTARY, DISTRICT SERVICES, DODGERTOWN ELEMENTARY, FELLSMERE ELEMENTARY, GIFFORD MIDDLE, GLENDALE ELEMENTARY, INDIAN RIVER ACADEMY, LIBERTY MAGNET, OSCEOLA MAGNET SCHOOL (NEW), OSLO MIDDLE, PELICAN ISLAND ELEMENTARY, ROSEWOOD ELEMENTARY, SEBASTIAN ELEMENTARY, SEBASTIAN RIVER MIDDLE, SEBASTIAN RIVER SENIOR HIGH, STORM GROVE MIDDLE SCHOOL, SUPPORT SERVICE COMPLEX, TRANSPORTATION DEPARTMENT, TREASURE COAST ELEMENTARY, TREASURE COAST TECHNICAL COLLEGE, VERO BEACH ELEMENTARY, VERO BEACH SENIOR HIGH, WABASSO SCHOOL					
Safety to Life	\$1,087,643	\$1,343,201	\$1,389,408	\$1,754,938	\$1,628,972	\$7,204,162
Locations:	Administration Building, ALTERNATIVE CENTER FOR EDUCATION, BEACHLAND ELEMENTARY, CITRUS ELEMENTARY, DISTRICT SERVICES, DODGERTOWN ELEMENTARY, FELLSMERE ELEMENTARY, GIFFORD MIDDLE, GLENDALE ELEMENTARY, INDIAN RIVER ACADEMY, LIBERTY MAGNET, OSCEOLA MAGNET SCHOOL (NEW), OSLO MIDDLE, PELICAN ISLAND ELEMENTARY, ROSEWOOD ELEMENTARY, SEBASTIAN ELEMENTARY, SEBASTIAN RIVER MIDDLE, SEBASTIAN RIVER SENIOR HIGH, STORM GROVE MIDDLE SCHOOL, SUPPORT SERVICE COMPLEX, TRANSPORTATION DEPARTMENT, TREASURE COAST ELEMENTARY, TREASURE COAST TECHNICAL COLLEGE, VERO BEACH ELEMENTARY, VERO BEACH SENIOR HIGH, WABASSO SCHOOL					
Fencing	\$0	\$0	\$0	\$0	\$0	\$0
Locations:	No Locations for this expenditure.					
Parking	\$0	\$0	\$521,230	\$0	\$775,000	\$1,296,230
Locations:	GLENDALE ELEMENTARY, LIBERTY MAGNET, PELICAN ISLAND ELEMENTARY					
Electrical	\$0	\$0	\$0	\$0	\$0	\$0
Locations:	No Locations for this expenditure.					
Fire Alarm	\$600,000	\$0	\$0	\$1,350,000	\$300,000	\$2,250,000
Locations:	CITRUS ELEMENTARY, DODGERTOWN ELEMENTARY, FELLSMERE ELEMENTARY, GLENDALE ELEMENTARY, LIBERTY MAGNET, OSCEOLA MAGNET SCHOOL (NEW), OSLO MIDDLE, ROSEWOOD ELEMENTARY, SEBASTIAN RIVER MIDDLE, TRANSPORTATION DEPARTMENT, TREASURE COAST ELEMENTARY, VERO BEACH ELEMENTARY, VERO BEACH SENIOR HIGH					
Telephone/Intercom System	\$0	\$0	\$0	\$0	\$0	\$0
Locations:	No Locations for this expenditure.					
Closed Circuit Television	\$0	\$0	\$0	\$0	\$0	\$0
Locations:	No Locations for this expenditure.					
Paint	\$1,990,000	\$0	\$1,600,000	\$1,200,000	\$2,500,000	\$7,290,000
Locations:	DODGERTOWN ELEMENTARY, GIFFORD MIDDLE, OSLO MIDDLE, SEBASTIAN RIVER SENIOR HIGH, STORM GROVE MIDDLE SCHOOL, VERO BEACH SENIOR HIGH					
Maintenance/Repair	\$977,341	\$1,572,160	\$1,572,160	\$1,572,160	\$1,572,160	\$7,265,981
Locations:	Administration Building, ALTERNATIVE CENTER FOR EDUCATION, BEACHLAND ELEMENTARY, CITRUS ELEMENTARY, DISTRICT SERVICES, DODGERTOWN ELEMENTARY, FELLSMERE ELEMENTARY, GIFFORD MIDDLE, GLENDALE ELEMENTARY, INDIAN RIVER ACADEMY, LIBERTY MAGNET, OSCEOLA MAGNET SCHOOL (NEW), OSLO MIDDLE, PELICAN ISLAND ELEMENTARY, ROSEWOOD ELEMENTARY, SEBASTIAN ELEMENTARY, SEBASTIAN RIVER MIDDLE, SEBASTIAN RIVER SENIOR HIGH, STORM GROVE MIDDLE SCHOOL, SUPPORT SERVICE COMPLEX, TRANSPORTATION DEPARTMENT, TREASURE COAST ELEMENTARY, TREASURE COAST TECHNICAL COLLEGE, VERO BEACH ELEMENTARY, VERO BEACH SENIOR HIGH, WABASSO SCHOOL					
Sub Total:	\$6,174,914	\$8,903,201	\$6,715,798	\$10,914,946	\$10,896,132	\$43,604,991



DISTRICT CAPITAL FINANCIAL PROFILE

Capital Improvement Plan 2020 - 2025

PECO Maintenance Expenditures	\$0	\$306,030	\$306,030	\$306,030	\$306,030	\$1,224,120
1.50 Mill Sub Total:	\$8,640,675	\$9,437,171	\$8,134,768	\$12,583,916	\$15,340,102	\$54,136,632

Other Items	2020 - 2021 Actual Budget	2021 - 2022 Projected	2022 - 2023 Projected	2023 - 2024 Projected	2024 - 2025 Projected	Total
Site Improvements Districtwide	\$100,000	\$0	\$0	\$100,000	\$550,000	\$750,000
Locations	OSLO MIDDLE, SEBASTIAN RIVER MIDDLE, SEBASTIAN RIVER SENIOR HIGH, VERO BEACH SENIOR HIGH					
Paving, WW Covers & Sidewalks Districtwide	\$0	\$240,000	\$255,000	\$0	\$0	\$495,000
Locations	DODGERTOWN ELEMENTARY, OSCEOLA MAGNET SCHOOL (NEW), OSLO MIDDLE, VERO BEACH SENIOR HIGH					
Chiller Replacement	\$650,000	\$0	\$0	\$1,275,000	\$1,975,000	\$3,900,000
Locations	CITRUS ELEMENTARY, FELLSMERE ELEMENTARY, INDIAN RIVER ACADEMY, OSCEOLA MAGNET SCHOOL (NEW), OSLO MIDDLE, PELICAN ISLAND ELEMENTARY, SEBASTIAN ELEMENTARY, STORM GROVE MIDDLE SCHOOL, SUPPORT SERVICE COMPLEX, TRANSPORTATION DEPARTMENT, TREASURE COAST ELEMENTARY					
Furniture Fixtures & Equipment	\$25,000	\$250,000	\$300,000	\$250,000	\$300,000	\$1,125,000
Locations	Administration Building, ALTERNATIVE CENTER FOR EDUCATION, BEACHLAND ELEMENTARY, CITRUS ELEMENTARY, DISTRICT SERVICES, DODGERTOWN ELEMENTARY, FELLSMERE ELEMENTARY, GIFFORD MIDDLE, GLENDALE ELEMENTARY, INDIAN RIVER ACADEMY, LIBERTY MAGNET, OSCEOLA MAGNET SCHOOL (NEW), OSLO MIDDLE, PELICAN ISLAND ELEMENTARY, ROSEWOOD ELEMENTARY, SEBASTIAN ELEMENTARY, SEBASTIAN RIVER MIDDLE, SEBASTIAN RIVER SENIOR HIGH, STORM GROVE MIDDLE SCHOOL, SUPPORT SERVICE COMPLEX, TRANSPORTATION DEPARTMENT, TREASURE COAST ELEMENTARY, TREASURE COAST TECHNICAL COLLEGE, VERO BEACH ELEMENTARY, VERO BEACH SENIOR HIGH, WABASSO SCHOOL					
Playground Equipment Replacement	\$350,000	\$350,000	\$350,000	\$350,000	\$350,000	\$1,750,000
Locations	BEACHLAND ELEMENTARY, CITRUS ELEMENTARY, DODGERTOWN ELEMENTARY, FELLSMERE ELEMENTARY, GLENDALE ELEMENTARY, INDIAN RIVER ACADEMY, LIBERTY MAGNET, OSCEOLA MAGNET SCHOOL (NEW), PELICAN ISLAND ELEMENTARY, ROSEWOOD ELEMENTARY, SEBASTIAN ELEMENTARY, TREASURE COAST ELEMENTARY, VERO BEACH ELEMENTARY, WABASSO SCHOOL					
District Technology	\$440,761	\$0	\$0	\$0	\$500,000	\$940,761
Locations	Administration Building, ALTERNATIVE CENTER FOR EDUCATION, BEACHLAND ELEMENTARY, CITRUS ELEMENTARY, DISTRICT SERVICES, DODGERTOWN ELEMENTARY, FELLSMERE ELEMENTARY, GIFFORD MIDDLE, GLENDALE ELEMENTARY, INDIAN RIVER ACADEMY, LIBERTY MAGNET, OSCEOLA MAGNET SCHOOL (NEW), OSLO MIDDLE, PELICAN ISLAND ELEMENTARY, ROSEWOOD ELEMENTARY, SEBASTIAN ELEMENTARY, SEBASTIAN RIVER MIDDLE, SEBASTIAN RIVER SENIOR HIGH, STORM GROVE MIDDLE SCHOOL, SUPPORT SERVICE COMPLEX, TRANSPORTATION DEPARTMENT, TREASURE COAST ELEMENTARY, TREASURE COAST TECHNICAL COLLEGE, VERO BEACH ELEMENTARY, VERO BEACH SENIOR HIGH, WABASSO SCHOOL					
Building Improvements/Renovations Districtwide	\$900,000	\$0	\$820,000	\$0	\$1,075,000	\$2,795,000
Locations	BEACHLAND ELEMENTARY, FELLSMERE ELEMENTARY, GIFFORD MIDDLE, GLENDALE ELEMENTARY, INDIAN RIVER ACADEMY, OSCEOLA MAGNET SCHOOL (NEW), OSLO MIDDLE, ROSEWOOD ELEMENTARY, SEBASTIAN RIVER SENIOR HIGH, VERO BEACH SENIOR HIGH, WABASSO SCHOOL					
Total:	\$8,640,675	\$9,743,201	\$8,440,798	\$12,889,946	\$15,646,132	\$55,360,752



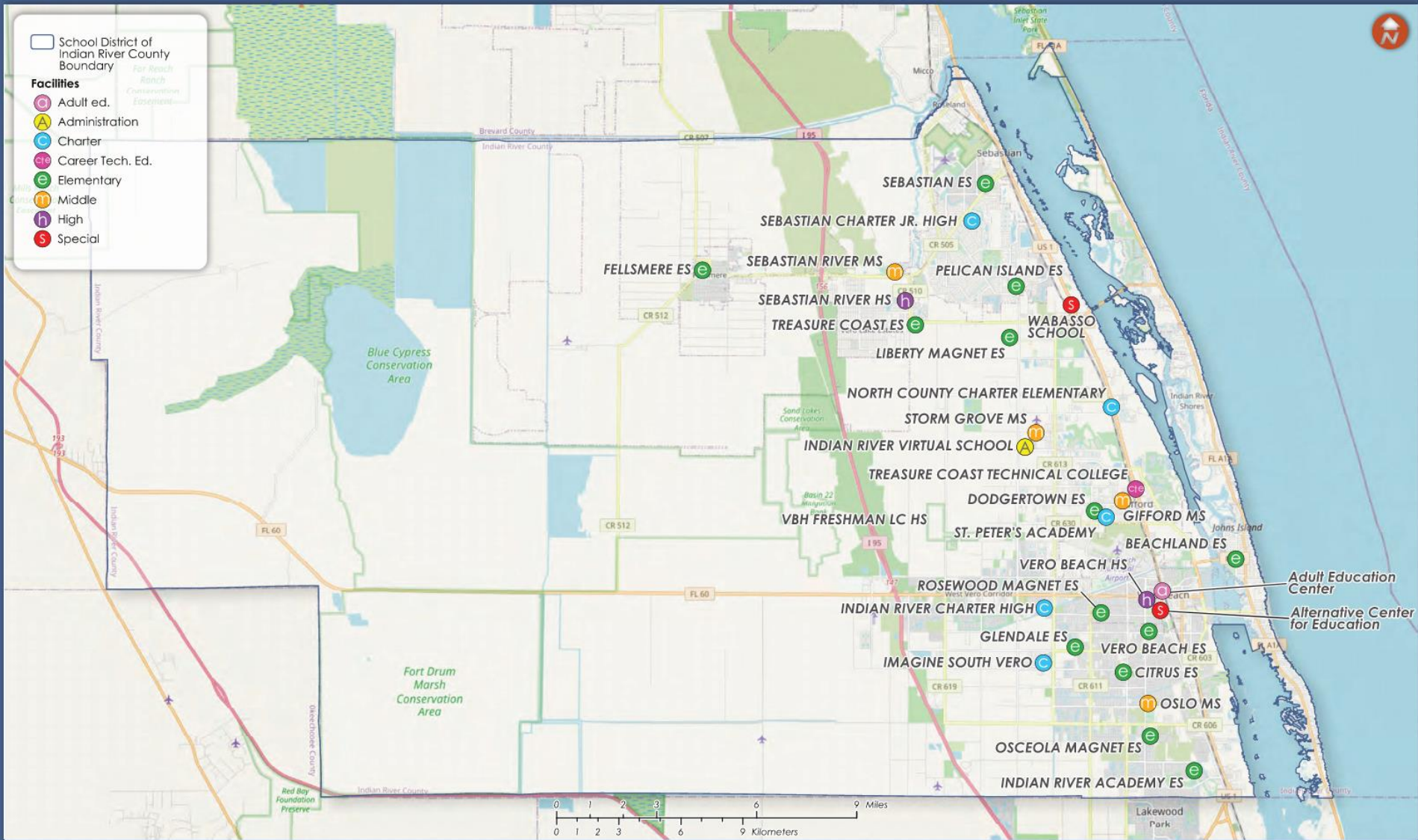
DISTRICT CAPITAL FINANCIAL PROFILE

Debt Expenditures + Capacity Summary

SDIRC Florida
Capital Project Revenues + Other Financing Sources
Projections for Fiscal Year 2020 - 2024

REVENUES + OTHER FINANCING SOURCES	2019 - 2020	2020 - 2021	2021 - 2022	2022 - 2023	2023 - 2024	TOTAL
Property Taxes	\$ 28,671,128	\$ 30,123,504	\$ 31,507,056	\$ 32,965,488	\$ 34,428,960	\$ 157,696,136
PECO- Maintenance	\$ -	\$ 306,030	\$ 306,030	\$ 306,030	\$ 306,030	\$ 1,224,120
PECO- Charters	\$ 1,214,934	\$ 432,756	\$ 432,756	\$ 432,756	\$ 432,756	\$ 2,945,958
State Chare School Capital Outlay	\$ -	\$ -	\$ -	\$ -	\$ -	\$ -
CO & DS	\$ 110,013	\$ 110,013	\$ 110,013	\$ 110,013	\$ 110,013	\$ 550,065
Interest	\$ 32,158	\$ 32,158	\$ 32,158	\$ 32,158	\$ 32,158	\$ 160,790
Other	\$ 9,005	\$ 9,005	\$ 9,005	\$ 9,005	\$ 9,005	\$ 45,025
Impact Fees Estimated Revenues	\$ 1,700,000	\$ 1,300,000	\$ 1,300,000	\$ 1,300,000	\$ 1,300,000	\$ 6,900,000
Fund Balance	\$ -	\$ 700,000	\$ -	\$ 6,000,000	\$ -	\$ 6,700,000
Total Revenue & Other Financing Sources	\$ 31,737,238	\$ 33,013,466	\$ 33,697,018	\$ 41,155,450	\$ 36,618,922	\$ 176,222,094
Transfer to General Fund	\$ 4,555,636	\$ 3,500,000	\$ 3,500,000	\$ 3,500,000	\$ 3,500,000	\$ 18,555,636
Transfer to Charter School Capital Outlay	\$ 1,214,934	\$ 1,880,460	\$ 1,880,460	\$ 1,880,460	\$ 1,880,460	\$ 8,736,774
<i>Debt Service</i>						
Performance Contracting	\$ 891,287	\$ -	\$ -	\$ -	\$ -	\$ 891,287
QSCB Debt Service	\$ 1,300,125	\$ 1,300,125	\$ 1,300,125	\$ 1,300,125	\$ 1,300,125	\$ 6,500,625
COP Debt Service (Existing COP)	\$ 10,070,590	\$ 10,063,840	\$ 10,065,090	\$ 10,068,090	\$ 10,062,250	\$ 50,329,860
Total Debt Service	\$ 12,262,002	\$ 11,363,965	\$ 11,365,215	\$ 11,368,215	\$ 11,362,375	\$ 57,721,772
NET Remaining Funding Sources Before On-Going Commitment + Projects	\$ 13,704,666	\$ 16,269,041	\$ 16,951,343	\$ 24,406,775	\$ 19,876,087	\$ 91,207,912
On-Going Commitments	\$ 12,004,666	\$ 14,969,041	\$ 15,651,343	\$ 23,106,775	\$ 18,576,087	\$ 84,307,912
New Projects on 5-Year CIP	\$ -	\$ -	\$ -	\$ -	\$ -	\$ -
Project Commitment Restricted Funds	\$ 1,700,000	\$ 1,300,000	\$ 1,300,000	\$ 1,300,000	\$ 1,300,000	\$ 6,900,000
NET Remaining Funding Sources After On-Going Commitments + Projects	\$ -	\$ -	\$ -	\$ -	\$ -	\$ -







Grades PK-5 Residence vs. Enrollment Location		Enrolled In																	Reside In	Transfer Out	Transfer Out %			
		Beachland	Citrus	Dodgertown	Fellsmere	Glendale	Imagine	Indian River Academy	Liberty	North County Charter	Osceola	Pelican Island	Rosewood	Sebastian	St. Peter's Academy	Treasure Coast	Vero Beach	Wabasso						
Reside In	Beachland	289	14	20	-	4	9	6	5	13	35	2	24	4	20	-	7	-	452	163	36%			
	Citrus	22	526	3	2	50	204	13	6	8	158	3	110	-	9	2	36	1	1,153	627	54%			
	Dodgertown	84	30	299	2	91	97	2	55	62	55	20	138	8	55	15	33	2	1,048	749	71%			
	Fellsmere	-	-	2	553	2	3	-	31	28	-	18	-	7	-	9	-	2	655	102	16%			
	Glendale	12	21	5	-	322	89	4	2	7	63	3	126	2	10	2	25	-	693	371	54%			
	Indian River Academy	20	45	8	-	22	65	400	-	10	122	1	45	1	7	-	34	3	783	383	49%			
	Out of District	4	13	3	-	7	19	16	-	2	11	4	1	4	2	2	8	-	96	-	-			
	Pelican Island	7	1	20	4	7	1	1	133	55	2	220	2	12	5	40	4	-	514	294	57%			
	Sebastian	13	9	49	3	7	5	-	128	80	6	43	7	360	9	35	8	1	763	403	53%			
	Treasure Coast	6	-	9	30	5	21	-	182	101	6	43	17	13	1	575	8	2	1,019	444	44%			
	Vero Beach	30	48	14	-	40	59	26	1	16	78	-	73	-	13	1	453	-	852	399	47%			
	Enrolled	487	707	432	594	557	572	468	543	382	536	357	543	411	131	681	616	11	8,028					
	Reside & Enrolled	289	526	299	553	322	-	400	-	-	-	220	-	360	-	575	453	-						
	Transfer In	198	181	133	41	235	-	68	-	-	-	137	-	51	-	106	163	-						
Transfer In %	41%	26%	31%	7%	42%	-	15%	-	-	-	38%	-	12%	-	16%	26%	-							





Grades 6-8 Residence vs. Enrollment Location		Enrolled In . . .										Reside In	Transfer Out	Transfer Out %
		Alternative Center for Edu.	Gifford	Imagine Schools At South Vero	Oslo	Sebastian Charter Jr High	Sebastian River	St. Peter's Academy	Storm Grove	Wabasso School				
Reside In . . .	Gifford	6	567	78	102	24	14	10	35	9	845	278	33%	
	Oslo	8	27	144	787	10	1	1	45	7	1,030	243	24%	
	Out of District		1	8	18	1	3		2		33	-	-	
	Sebastian River	4	25	10	2	115	793		18	4	971	178	18%	
	Storm Grove	4	33	71	17	115	94	3	971	6	1,314	343	26%	
	Unmatched			1							1	-	-	
	Enrolled	22	653	312	926	265	905	14	1,071	26	4,194			
	Reside & Enrolled	-	567	-	787	-	793	-	971	-				
	Transfer In	-	86	-	139	-	112	-	100	-				
	Transfer In %	-	13%	-	15%	-	12%	-	9%	-				





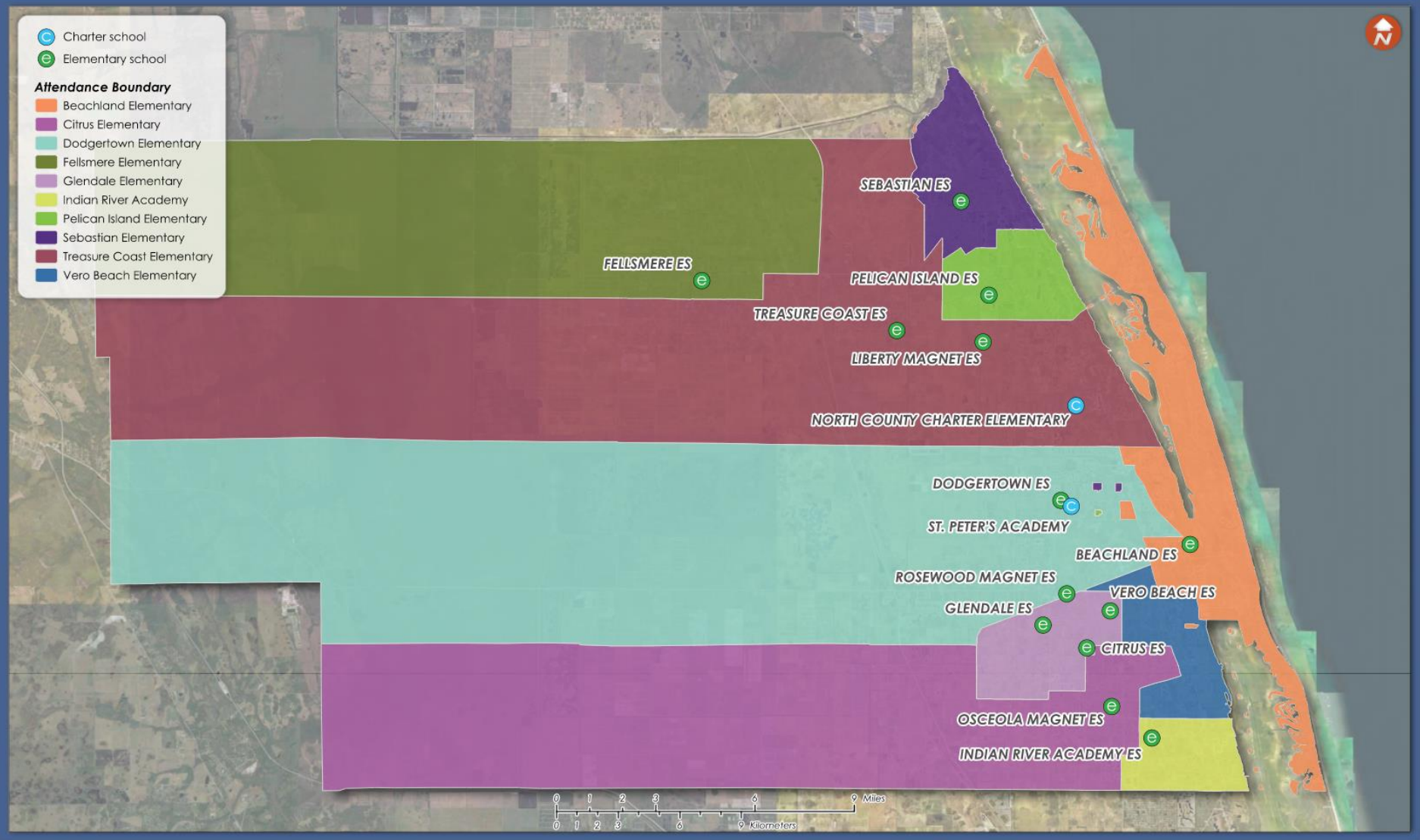
Grades 9-12 Residence vs. Enrollment Location		Enrolled In . . .					Reside In	Transfer Out	Transfer Out %
		Alternative Center for Edu.	Indian River Charter	Sebastian River	Vero Beach	Wabasso School			
Reside In . . .	Out of District	-	18	8	22	1	49	-	-
	Sebastian River High School	7	194	1,798	127	16	2,142	344	16%
	Unmatched	-	1	-	-	-	1	-	-
	Vero Beach High School	26	476	119	2,786	24	3,431	645	19%
	Enrolled	33	689	1,925	2,935	41	5,623		
	Reside & Enrolled	-	-	1,798	2,786	-			
	Transfer In	-	-	127	149	-			
	Transfer In %	-	-	7%	5%	-			





Distances of Enrolled Students			
School Name	Average (Miles)	Shortest (Miles)	Furthest (Miles)
Alternative Education	5.7	0.3	19.5
Beachland Elementary	4.3	0.1	15.6
Citrus Elementary	2.4	0.1	31.0
Dodgertown Elementary	2.6	0.1	30.7
Fellsmere Elementary	1.5	0.1	22.3
Gifford Middle School	4.0	0.1	16.7
Glendale Elementary	2.8	0.2	19.0
Imagine South Vero	5.0	0.2	20.1
Indian River Academy	2.0	0.0	17.5
Indian River Charter High	7.0	0.7	19.2
Liberty Magnet	5.5	1.0	14.0
North County Charter Elementary	7.5	0.4	18.3
Osceola Magnet	4.0	0.1	33.6
Oslo Middle School	2.3	0.0	16.7
Pelican Island Elementary	3.5	0.0	16.8
Rosewood Magnet	3.7	0.0	15.8
Sebastian Charter Jr. High	5.7	0.4	19.7
Sebastian Elementary	4.2	0.4	19.8
Sebastian Rv. High School	5.0	0.6	19.8
Sebastian Rv. Middle	4.5	0.7	16.7
St. Peter's Academy	2.8	0.1	12.8
Storm Grove Middle	6.0	0.6	13.5
Treasure Coast Elementary	3.3	0.3	15.7
Vero Beach Elementary	2.2	0.0	15.5
Vero Beach High School	3.9	0.0	30.3
Wabasso School	9.6	2.9	15.0





Beachland Elementary School School Profile



ENROLLMENT										
October 2018 (Survey 2) Student Enrollment by Grade and Ethnicity										
GD	White, Non-Hisp.		Black, Non-Hisp.		Hispanic		Other		Total	
	Ct	%	Ct	%	Ct	%	Ct	%		
KG	49	63.6%	17	22.1%	6	7.8%	5	6.5%	77	
1	54	65.1%	15	18.1%	11	13.3%	3	3.6%	83	
2	41	50.6%	24	29.6%	10	12.3%	6	7.4%	81	
3	49	60.5%	11	13.6%	14	17.3%	7	8.6%	81	
4	56	71.8%	10	12.8%	10	12.8%	2	2.6%	78	
5	41	56.2%	14	19.2%	14	19.2%	4	5.5%	73	

October 2018 Exceptional Student Program Information		18-19 Least Restrictive Environment
Program	Number with Exceptionality	92.21%
Exceptional Students	59	
Gifted (* = <10)	58	
Total	117	

Oct 2018 English Language Learners	
Count	29
Percent	6.1%

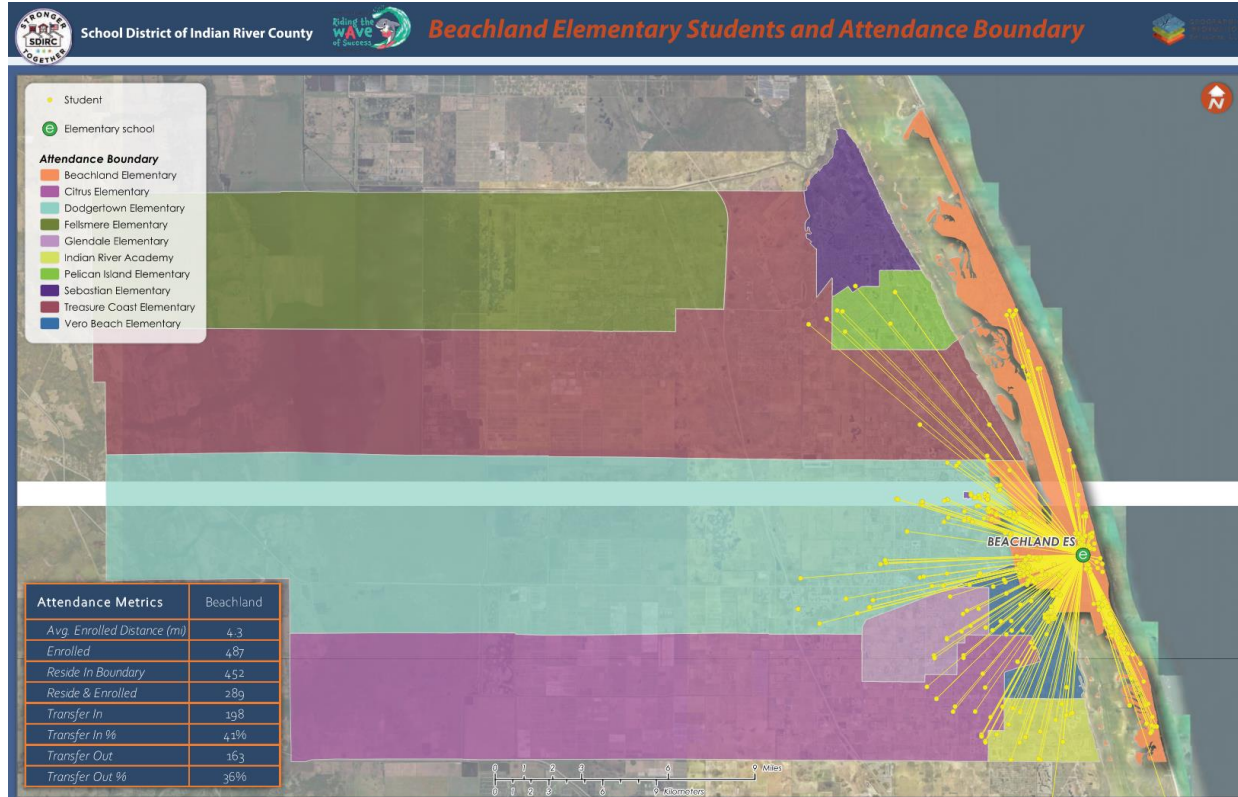
ACADEMIC PERFORMANCE			
School Grade	2017-2018	2018-2019	Change
	C	A	

Measures of School Grade				
Component	17-18	18-19	Change	
ELA	Achievement	55	72	↑
	LG All	47	74	↑
	LG Low 25%	31	68	↑
Math	Achievement	62	73	↑
	LG All	49	81	↑
	LG Low 25%	34	58	↑
Science Achievement	59	71	↑	

SCHOOL CULTURE			
18-19 Climate Surveys			
% Answering Always and Often			
Subject	Parent	Student	Staff
Success	92%	80%	NA
Safety	92%	76%	96%
Climate	93%	NA	83%

18-19 Student Attendance			
% of students with an ADA below 90%, between 90-95%, and above 95%.			
ADA	<90%	90-95%	>95%
% of Stud	11%	29%	60%

18-19 Average Daily Attendance	
Instructional Staff	Students
94.6%	94.6%



Beachland Elementary School School Profile

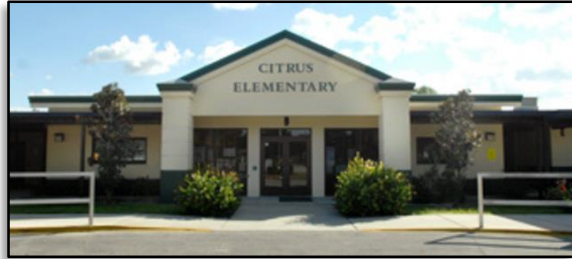


PROGRAMS	ELECTIVES
<p>Beachland Elementary is a School of Enrichment: Students in kindergarten through fifth grade have extended opportunities excel in all areas of the curriculum, especially in Science, Technology, Engineering, Art, and Math (STEAM). Students who qualify for gifted education services and attend Beachland may participate in the pilot program with full-time enrichment classes. This program is currently for first and second grades. All students attending BES will develop their skills in STEAM through robotics, arts, engineering, PLTW, and other hands-on learning experiences.</p> <p>Project Lead the Way (PLTW) School: Program that helps students develop the knowledge and critical skills that they need to be successful in the global economy.</p> <p>STEAM School of Excellence</p> <p>Sanford Harmony – Social Emotional Learning</p> <p>Coding and Robotics through Gifted courses (1-5) and Media (K-5)</p> <p>After school Moonshot Academy (2nd and 3rd Grade)</p> <p>After school Extended Learning Opportunity (3rd, 4th, and 5th Grade)</p>	<p>PE</p> <p>Art</p> <p>Music</p> <p>Media</p>

CLUBS	SPORTS	AWARDS
Green Team	Track - Boys/Girls	Teacher of the Year District Finalist (19-20)
Student Council	Basketball - Boys/Girls	Employee of the Year District Finalist (19-20)
Chess Club	Girls on the Run - Girls	Best of Schools Float in Vero Beach's Annual Holiday Parade (19-20)
Shark Singers	SNAG Golf - Boys/Girls	Regional Science Olympiad - Overall 5th Place (18-19)
Running Club		Book Battle 1st Place (18-19)
Art Club		Tropicana Speech First Place 4th Grade (18-19)
Book Club/Writer's Workshop		Tropicana Speech First Place 5th Grade (18-19)
Safety Patrols		PBIS Silver Model School (18-19)
Book Battle		Science Fair K-3 Best of Show (17-18, 18-19)
Science Olympiad		Science Fair 4-6 Best of Show (18-19)
Reading Mentors (VBHS students)		iReady Most Gains in Reading in SDIRC (18-19)
STAR Mentors (VBHS students)		iReady Most Gains in Math in SDIRC (18-19)
		First Place License Plate Tag Art (18-19)
		Second Place License Plate Tag Art (18-19)
		School Grade "A" (18-19)
		Five Star School Award (17-18, 18-19)
		Golden School Award (17-18)
		Nominee for the Environmental Award for Keeping Indian River Beautiful (19-20)



Citrus Elementary School School Profile



ENROLLMENT									
October 2018 (Survey 2) Student Enrollment by Grade and Ethnicity									
GD	White, Non-Hisp.		Black, Non-Hisp.		Hispanic		Other		Total
	Ct	%	Ct	%	Ct	%	Ct	%	
KG	50	49.0%	21	20.6%	25	24.5%	6	5.9%	102
1	52	42.3%	28	22.8%	34	27.6%	9	7.3%	123
2	51	49.0%	20	19.2%	28	26.9%	5	4.8%	104
3	57	43.2%	29	22.0%	38	28.8%	8	6.1%	132
4	59	51.3%	21	18.3%	30	26.1%	5	4.3%	115
5	59	47.2%	21	16.8%	39	31.2%	6	4.8%	125

October 2018 Exceptional Student Program Information		18-19 Least Restrictive Environment
Program	Number with Exceptionality	67.15%
Exceptional Students	131	
Gifted (* = <10)	*	
Total	131	

Oct 2018 English Language Learners	
Count	81
Percent	11.6%

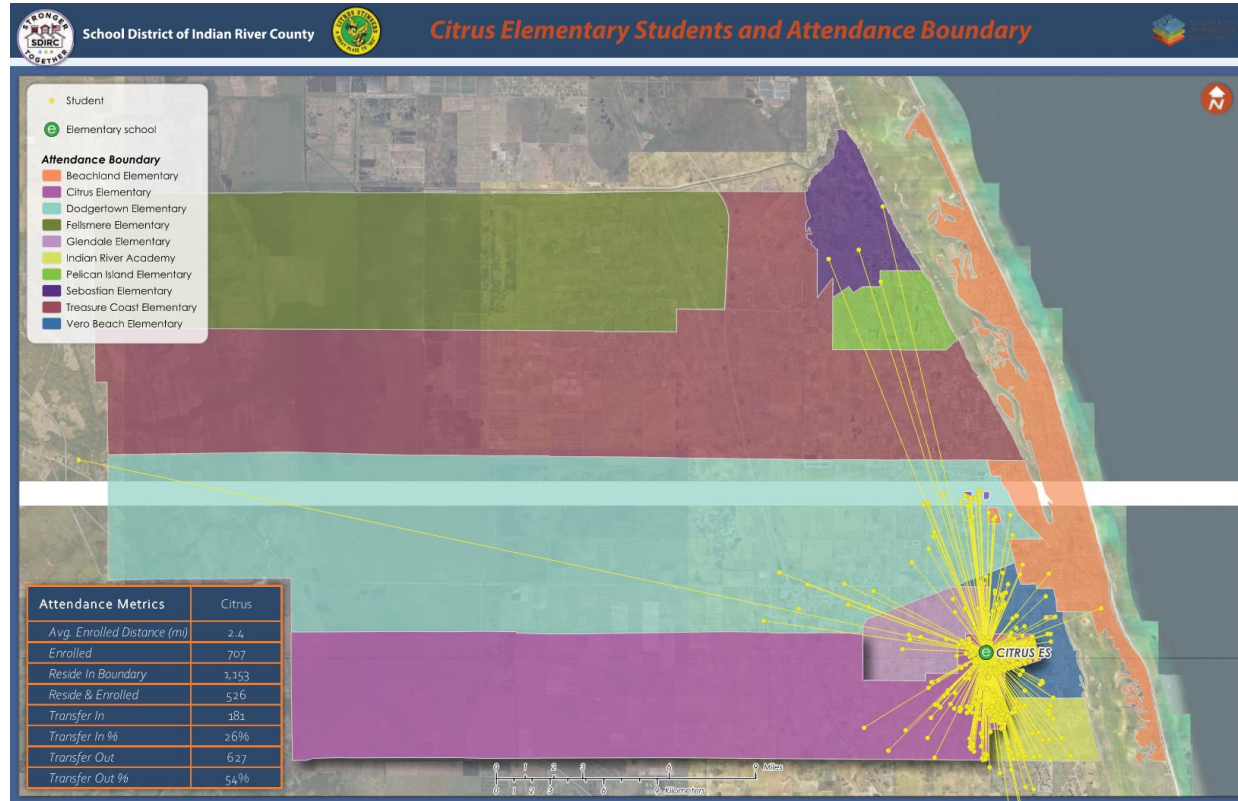
ACADEMIC PERFORMANCE			
School Grade			
	2017-2018	2018-2019	Change
	C	B	↑

Measures of School Grade				
Component	17-18	18-19	Change	
ELA	Achievement	48	52	↑
	LG All	52	60	↑
Math	Achievement	52	58	↑
	LG All	56	64	↑
Science Achievement	LG Low 25%	40	59	↑
		37	49	↑

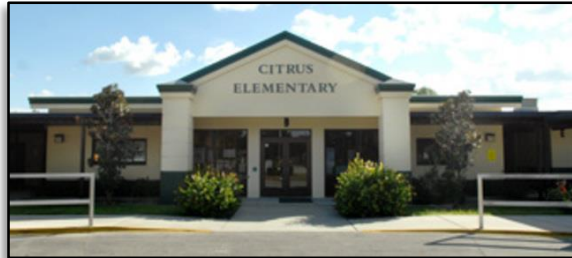
SCHOOL CULTURE			
18-19 Climate Surveys			
% Answering Always and Often			
Subject	Parent	Student	Staff
Success	97%	92%	NA
Safety	96%	77%	93%
Climate	95%	NA	85%

18-19 Student Attendance			
% of students with an ADA below 90%, between 90-95% and above 95%.			
ADA	<90%	90-95%	>95%
% of Stud	11%	31%	58%

18-19 Average Daily Attendance	
Instructional Staff	94.8%
Students	94%



Citrus Elementary School School Profile



PROGRAMS	ELECTIVES
5 ESE self contained units, with 4 focused on students with autism	PE
1 facility dog on campus, working to help students with autism	Music
Very Special Arts Program (for students with exceptionalities)	Media
Day of Caring and Rotary Club creating the rain garden	Art
The Learning Alliance Interventionist for primary reading support	Science (w/Robotics)
Moonshot Afterschool Academy for Grade 3 students	
Superstar Afterschool Camp for Grades k-2, 4-5 students	
PBIS: Positive Behavior Support School	
Departmentalized in Grades 1, 3-5	

CLUBS	SPORTS	AWARDS
Audobon Advocates-Grade 5	Project Unify - Boys	Five Star Award (17-18, 18-19)
Stinger Singers-Grade 5	Basketball - Boys/Girls	PBIS Model School (18-19)
Garden Club-Grade 4	Track - Boys/Girls	Math Bee Champions (18-19)
Rotary Mentoring Club-Grade 5	Snag Golf - Boys/Girls	Ed. Foundation Grant Recipients (17-18, 18-19)
Book Battle-Grade 4-5	Girls on the Run - Girls	B school (18-19)
ASD Inclusion Group		District Teacher of the Year Finalist (17-18, 18-19)
Reading Mentor Club (VBHS students work w		District Employee of the Year Finalist (19-20)
Citrus Mentors (45 staff members each chose		CASA Basketball Girls Champions (2018)
Safety Patrols-Grade 5		Project Unify State Champions (2018, 2019)
Student Council		White Glove Custodian Award for Cleanliness (2018-2019)
Kids Tag Art Program Participants		Tuttle Law Holiday Art Card Contest Winners (for students with exceptionalities) 2019



Dodgertown Elementary School Profile



ENROLLMENT										
October 2018 (Survey 2) Student Enrollment by Grade and Ethnicity										
GD	White, Non-Hisp.		Black, Non-Hisp.		Hispanic		Other		Total	
	Ct	%	Ct	%	Ct	%	Ct	%	Ct	%
KG	12	17.6%	38	55.9%	12	17.6%	6	8.8%	68	
1	15	21.7%	36	52.2%	11	15.9%	7	10.1%	69	
2	10	20.8%	24	50.0%	9	18.8%	5	10.4%	48	
3	16	21.6%	44	59.5%	12	16.2%	2	2.7%	74	
4	9	17.6%	25	49.0%	15	29.4%	2	3.9%	51	
5	7	14.0%	21	42.0%	19	38.0%	3	6.0%	50	

October 2018 Exceptional Student Program Information		18-19 Least Restrictive Environment	
Program	Number with Exceptionality	75.73%	
Exceptional Students	85		
Gifted (* = <10)	0		
Total	85		

Oct 2018 English Language Learners	
Count	56
Percent	13.9%

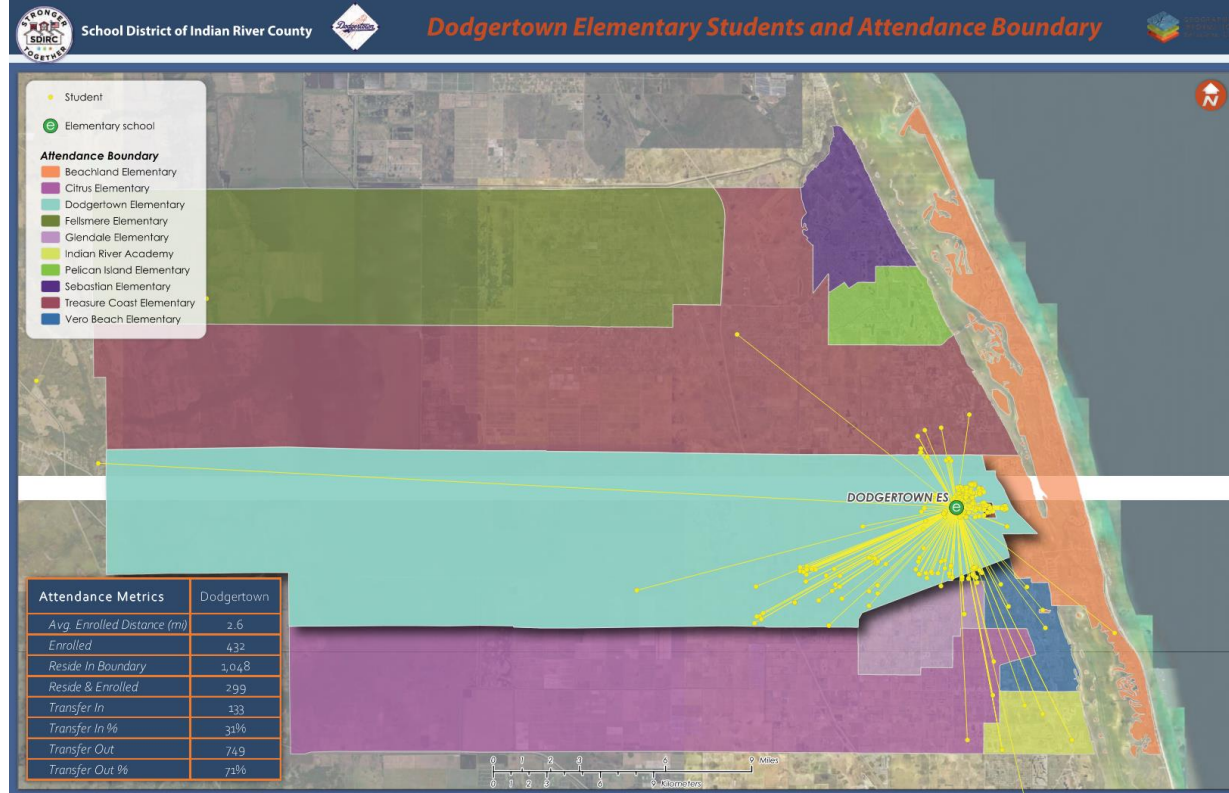
ACADEMIC PERFORMANCE			
School Grade			
2017-2018	2018-2019	Change	
C	C	➔	

Measures of School Grade			
Component	17-18	18-19	Change
ELA	Achievement	32	29 ↓
	LG All	48	56 ↑
	LG Low 25%	61	65 ↑
Math	Achievement	47	40 ↓
	LG All	54	61 ↑
	LG Low 25%	59	58 ↓
Science Achievement	33	26 ↓	

SCHOOL CULTURE			
18-19 Climate Surveys			
% Answering Always and Often			
Subject	Parent	Student	Staff
Success	89%	86%	NA
Safety	89%	70%	82%
Climate	90%	NA	73%

18-19 Student Attendance			
% of students with an ADA below 90% between 90-95% and above 95%			
ADA	<90%	90-95%	>95%
% of Stud	21%	27%	52%

18-19 Average Daily Attendance	
Instructional Staff	Students
94.5%	91.7%



Dodgertown Elementary School School Profile



PROGRAMS	ELECTIVES
Dodgertown Elementary is one of 10 schools in the State of Florida that received a grant to become a Community School. A Community school is both a place and a set of partnerships between the school and other community resources. Its integrated focus on academics, health and social services, youth and community development and community engagement leads to improved student learning, stronger families and healthier communities. DES offer a personalized curriculum that emphasizes real-world learning and community problem-solving.	
Gifted Resource Program Services	Music
SmartLab	PE
Strong volunteer program through The Learning Alliance, First Presbyterian, Community Church, and Big Brothers Big Sisters	Art
Kids at Hope School	Media
PBIS School	
Superintendent's Art Expo	
Musical Concert Choir	
Kindergarten Readiness Collaborative, Monthly Parent Training Sessions	
families to own.	
Title I School	
Day of Caring Volunteers	
Literacy and Math Fluency Bees	
Parent IMPACT Academies	
TLA Sponsored K-2 Interventionist	
Headstart Program (3 year olds)	
Pre-Kindergarten Program	
Extended Day Care (before/after school)	
Safety Patrol	
School Advisory Committee	

CLUBS	SPORTS	AWARDS
Ballet for grade 1, 3, 4 (by Ballet Vero Beach)	Girls on the Run - Girls	Five Star Award (17-18, 18-19)
Nutcracker Ballet for participating 4th graders	All County Track - Boys/Girls	Golden School Award (17-18)
Concert & Honors Choir	Snag Golf - Boys/Girls	PBIS Silver School Award (18-19)
		PBIS Bronze School Award (17-18)
		Florida School Recognition Award (17-18)



Fellsmere Elementary School School Profile



ENROLLMENT										
October 2018 (Survey 2) Student Enrollment by Grade and Ethnicity										
GD	White, Non-Hisp.		Black, Non-Hisp.		Hispanic		Other			Total
	Ct	%	Ct	%	Ct	%	Ct	%	Ct	
KG	7	8.4%	1	1.2%	75	90.4%	0	0.0%	83	
1	6	7.0%	2	2.3%	77	89.5%	1	1.2%	86	
2	9	8.0%	2	1.8%	100	89.3%	1	0.9%	112	
3	9	10.0%	4	4.4%	77	85.6%	0	0.0%	90	
4	7	7.6%	2	2.2%	82	89.1%	1	1.1%	92	
5	6	6.3%	3	3.2%	86	90.5%	0	0.0%	95	

October 2018 Exceptional Student Program Information	
Program	Number with Exceptionality
Exceptional Students	109
Gifted (* = <10)	*
Total	109

18-19 Least Restrictive Environment	
	86.27%

Oct 2018 English Language Learners	
Count	Percent
243	40.6%

ACADEMIC PERFORMANCE			
School Grade			
2017-2018	2018-2019	Change	
C	C	➔	

Measures of School Grade			
Component	17-18	18-19	Change
ELA	Achievement	41	41 ➔
	LG All	42	46 ⬆
Math	Achievement	57	57 ➔
	LG All	71	67 ⬆
Science Achievement	LG Low 25%	63	63 ➔
		49	37 ⬇

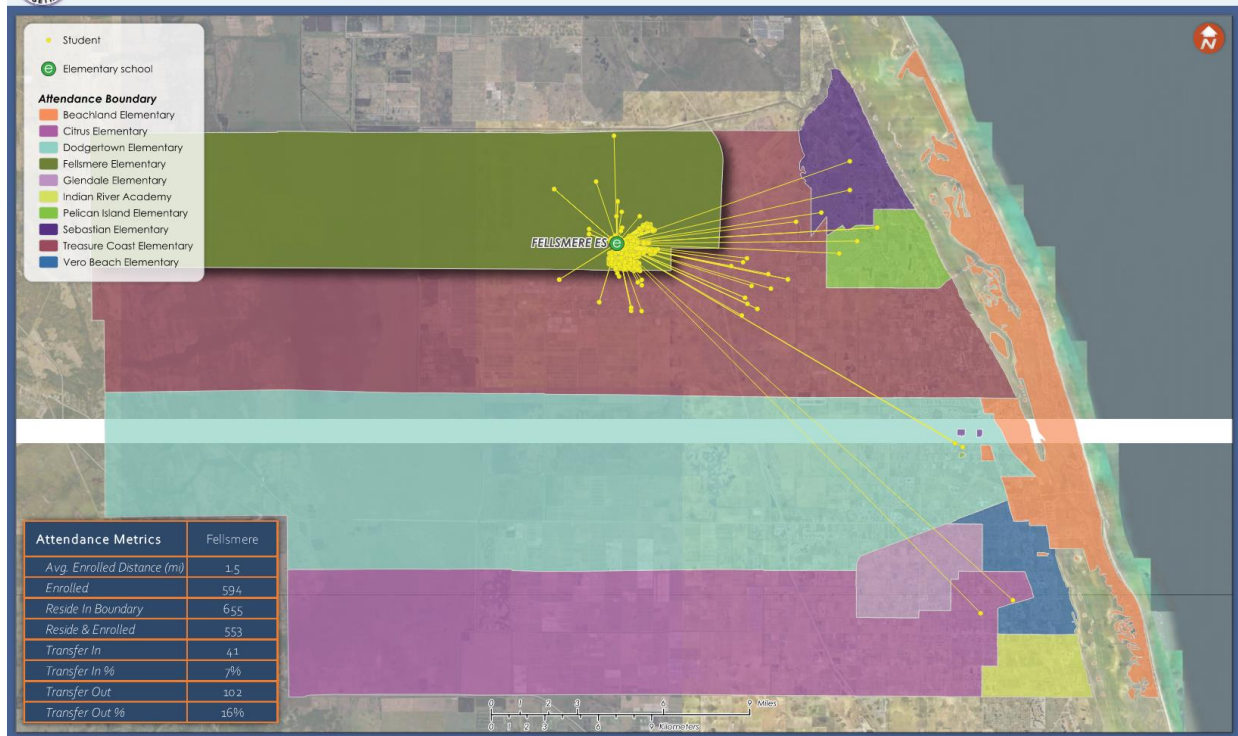
SCHOOL CULTURE			
18-19 Climate Surveys			
% Answering Always and Often			
Subject	Parent	Student	Staff
Success	95%	94%	NA
Safety	98%	83%	87%
Climate	95%	NA	62%

18-19 Student Attendance			
% of students with an ADA below 90% between 90-95% and above 95%			
ADA	<90%	90-95%	>95%
% of Stud	5%	25%	70%

18-19 Average Daily Attendance	
Instructional Staff	Students
94.6%	95.4%



Fellsmere Elementary Students and Attendance Boundary



Fellsmere Elementary School

School Profile



PROGRAMS	ELECTIVES
Fellsmere Elementary School is a dual language school where students learn a second language through immersion strategies.	Music
Title 1 Program School	PE
SuperStar Camp - Extended Learning Opportunity	Art
National School Lunch And Breakfast Program - Provision 2(All free)	Media
Accelerated Reading Program	Lab Math (GD 3-5)
Learning Alliance - K-2 Literacy Coach	
VPK Program - 2 units	
3rd Grade Interventionist Teacher (3GI)	
Science Fair	
English as a Second Language Program (ESOL)	
Extended Day Program	
STREAM Program - Robotics through Media	
Cadets and Kids Program for 3rd Grade Classrooms	
Drums Alive Program	
Vero Beach Ballet Program/Partnership	
Big Brothers and Big Sisters	
Fellsmere Police Outreach	
Daily Community Outreach	
PBIS Behavior Program	
Child Safety Matters Program	
Partnership - St. Edwards School	
Partnership - Frog Leg Festival	
Partnership - St. Augustine Church	
Partnership - Fellsmere Exchange Club	
Partnership - Dale Sorensen Real Estate, Inc.	
Partnership - General Federation of Women's Clubs of Melbourne	

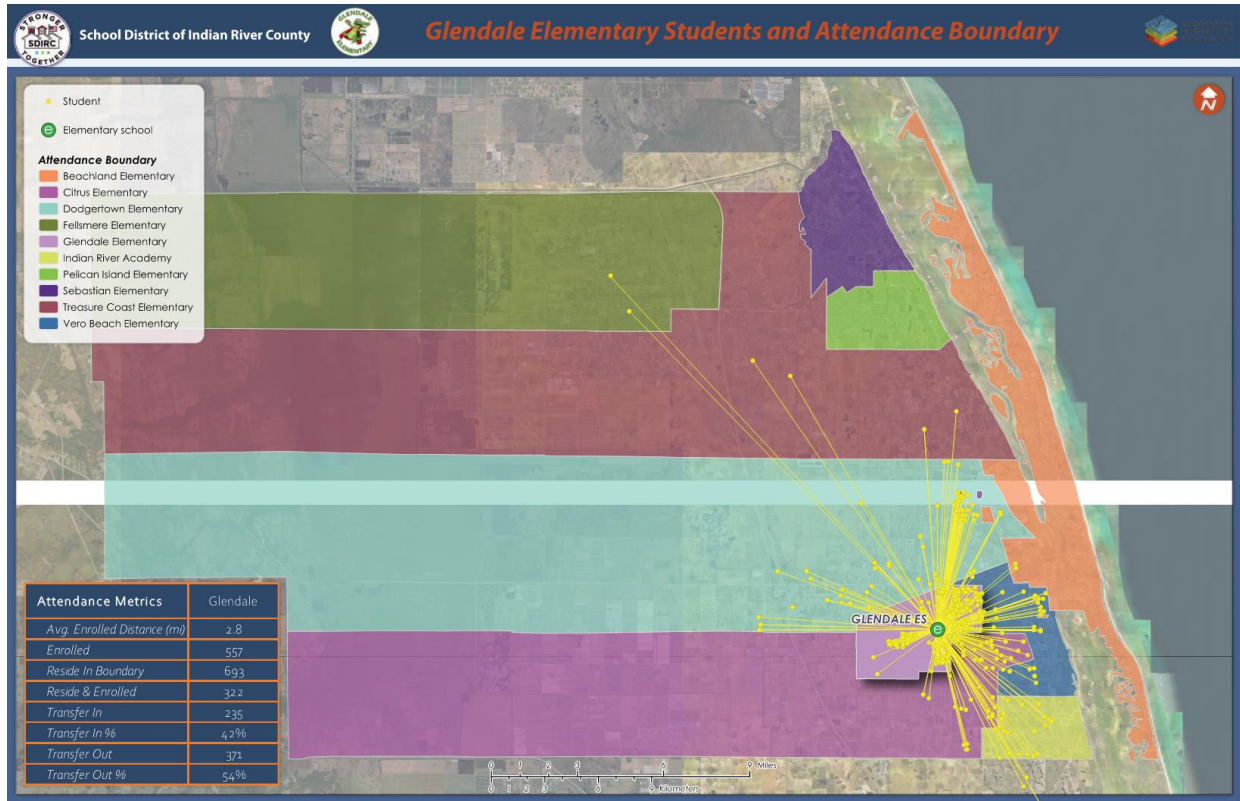
CLUBS	SPORTS	AWARDS
Ukulele Club	Elementary Track Team - Boys/Girls	Five Star School Award (17-18, 18-19)
Chorus Club		Golden School Award (17-18, 18-19)
Student Council		Math Bee - 2nd Place (18-19)
Safety Patrols		District Finalist Teacher of the Year (19-20)
Multi-Culture Club		District Employee of the Year (18-19)
Track Team		District Employee of the Year 2018 - Jillian Brothers (2018)
		Red Kettle Award - Most Collected (2017, 2018)
		Food Service Thanksgiving Lunch Student Participation (19-20)
		Tag Art Award - 3 students - 5th grade (18-19)
		Name Turtle Tag Art - Contest Winner (18-19)
		Healthier US School Challenge - Bronze Level (17-18)
		3rd Grade - 3rd Place Fast Math (18-19)
		4th Grade - 3rd Place Fast Math (18-19)
		5th Grade - 2nd Place Fast Math (18-19)



Glendale Elementary School School Profile



ENROLLMENT											ACADEMIC PERFORMANCE			SCHOOL CULTURE								
October 2018 (Survey 2) Student Enrollment by Grade and Ethnicity											School Grade			18-19 Climate Surveys								
	White, Non-Hisp.		Black, Non-Hisp.		Hispanic		Other		Total		2017-2018	2018-2019	Change	% Answering Always and Often								
GD	Ct	%	Ct	%	Ct	%	Ct	%	Ct		C	B	↑	Subject	Parent	Student	Staff					
KG	51	60.0%	12	14.1%	13	15.3%	9	10.6%	85					Success	92%	86%	NA					
1	49	60.5%	19	23.5%	12	14.8%	1	1.2%	81					Safety	96%	89%	86%					
2	57	54.3%	24	22.9%	19	18.1%	5	4.8%	105					Climate	96%	NA	83%					
3	61	59.2%	16	15.5%	19	18.4%	7	6.8%	103	Measures of School Grade			18-19 Student Attendance									
4	50	53.2%	24	25.5%	12	12.8%	8	8.5%	94	Component	17-18	18-19	Change	% of students with an ADA below 90%, between 90-95% and above 95%.								
5	65	60.7%	16	15.0%	23	21.5%	3	2.8%	107	ELA	Achievement	52	66	↑	ADA	<90%	90-95%	>95%				
October 2018 Exceptional Student Program Information					18-19 Least Restrictive Environment			Oct 2018 English Language Learners			<table border="1"> <tr> <td>% of Stud</td> <td>13%</td> <td>31%</td> <td>55%</td> </tr> <tr> <td></td> <td><90%</td> <td>90-95%</td> <td>>95%</td> </tr> </table>				% of Stud	13%	31%	55%		<90%	90-95%	>95%
% of Stud	13%	31%	55%																			
	<90%	90-95%	>95%																			
Program		Number with Exceptionality		87.12%			Count		Percent		18-19 Average Daily Attendance											
Exceptional Students		115					36		6.1%		Instructional Staff		Students									
Gifted (* = <10)		10									94.9%		93.5%									
Total		125																				





PROGRAMS	ELECTIVES
STEAM School Lift Off! Glendale will be soaring to new heights as we begin the journey to becoming a STEAM School site!	Music
Glendale Elementary is a Center for Innovation - 21st Centruy Media center connecting Science, Technology and Robotics.	PE
Star Mentor Program-High School Student led mentoring program focusing on helping the rest!	Art
Tropicana Speech Program-Speech Contest for grade 4 and 5 to help develop the art of public speaking.	Center for Innovation (Media)
Book Battle Team-Glendale students compete with other schools annually around the Sunshine State Reader Book List.	Gator Time Grades 4/5
Gator Express-Bi-Annual school based volunteer trip to deliver books and support to our district.	Computer Lab Grade 3
Thinking Maps-Glendale uses Thinking Maps to help support writing and reading comprehension.	
3GI-Third Grade Interventionist focused on helping 3rd grade students soar!	

CLUBS	SPORTS	AWARDS
Art Club Spring Semester Grades 4&5	Elementary Track Team - Boys/Girls	Five Star Award (17-18, 18-19, 19-20)
Chorus Grades 4th and 5th	Casa Basketball Team - Boys/Girls	March of Dimes Top Fundraising Team (16-17, 17-18, 18-19,)
Drum Chore Grade 5	SNAG Golf - Boys/Girls	PBIS Silver School Award (18-19)
Audobon Club Grade 5		District Teacher of the Year (17-18)
Student Council Grade 5		Distrcit Teacher of the Year Top Five Finalist (18-19)
Book Battle Team		Education Foundation High Impact grant Winner (18-19)
		Food and Nutrition Thanksgiving Winner (19-20)



Indian River Academy School Profile



ENROLLMENT										
October 2018 (Survey 2) Student Enrollment by Grade and Ethnicity										
GD	White, Non-Hisp.		Black, Non-Hisp.		Hispanic		Other		Total	
	Ct	%	Ct	%	Ct	%	Ct	%		
KG	33	48.5%	13	19.1%	17	25.0%	5	7.4%	68	
1	25	36.2%	18	26.1%	16	23.2%	10	14.5%	69	
2	30	50.0%	15	25.0%	10	16.7%	5	8.3%	60	
3	24	31.2%	26	33.8%	20	26.0%	7	9.1%	77	
4	30	41.7%	12	16.7%	23	31.9%	7	9.7%	72	
5	22	31.0%	25	35.2%	20	28.2%	4	5.6%	71	

October 2018 Exceptional Student Program Information		18-19 Least Restrictive Environment
Program	Number with Exceptionality	86.54%
Exceptional Students	60	
Gifted (* = <10)	*	
Total	60	

Oct 2018 English Language Learners	
Count	36
Percent	8.3%

ACADEMIC PERFORMANCE			
School Grade			
	2017-2018	2018-2019	Change
	C	C	→

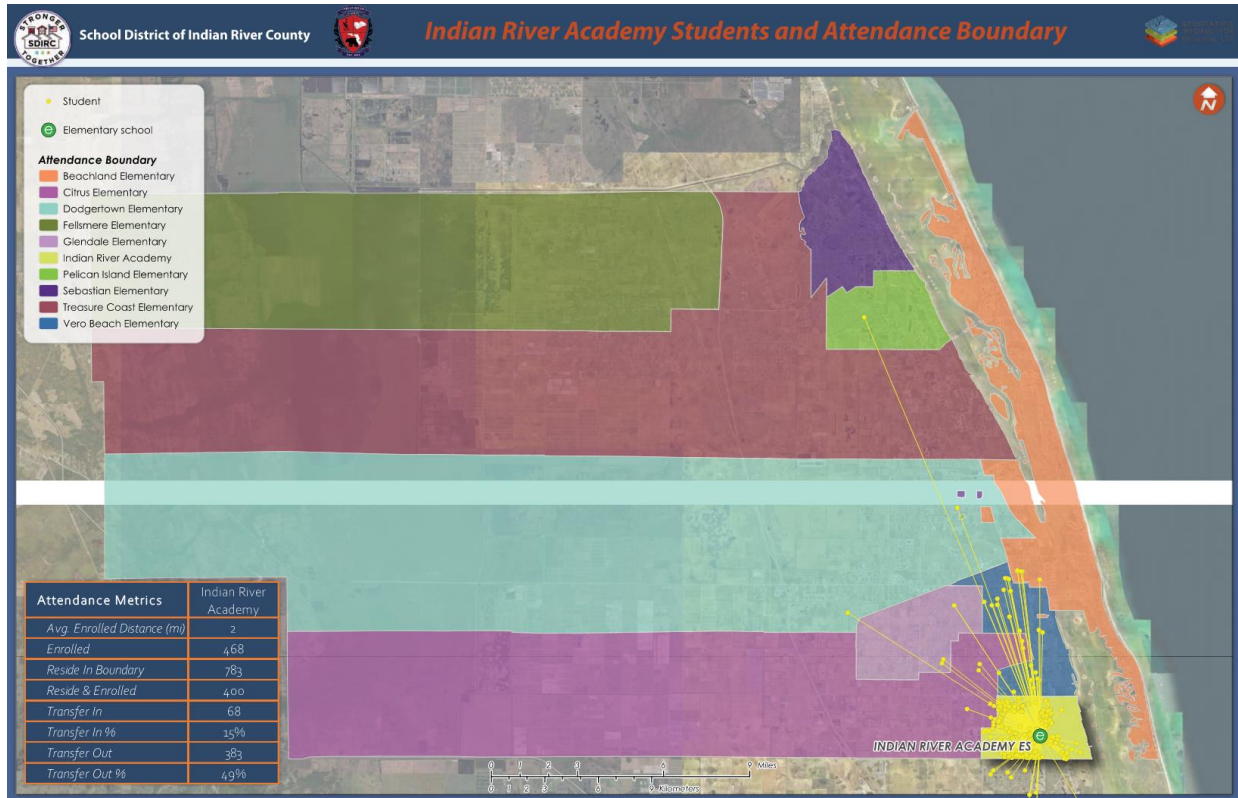
Measures of School Grade				
Component	17-18	18-19	Change	
ELA	Achievement	49	54	↑
	LG All	44	53	↑
	LG Low 25%	40	31	↓
Math	Achievement	55	53	↓
	LG All	58	53	↓
Science Achievement	46	35	↓	
	53	47	↓	

SCHOOL CULTURE				
18-19 Climate Surveys				
% Answering Always and Often				
Subject	Parent	Student	Staff	
Success	94%	85%	NA	
Safety	96%	75%	79%	
Climate	96%	NA	68%	

18-19 Student Attendance				
% of students with an ADA below 90%, between 90-95% and above 95%				
ADA	<90%	90-95%	>95%	
% of Stud	23%	30%	47%	

■ <90%
 ■ 90-95%
 ■ >95%

18-19 Average Daily Attendance	
Instructional Staff	94%
Students	92.6%



Indian River Academy School Profile



PROGRAMS	ELECTIVES
<p>Indian River Academy is a Conscious Discipline School Emphasizing Creative Exploration</p> <p>Outdoor Exploration-We utilize our outdoor spaces for "learning labs" integrating technology, partnering with local environmental agencies and providing our staff with professional development in integration of standards with real life experiences. We are connected with our environment through projects that link our science, language arts, math and social studies standards with our community resources! Audubon Society provides a yearly grant so that our fifth graders can participate in exploration with environmental scientists! Our Impact Garden, created by our Parent Teacher Organization, yields fresh vegetables and fruits so that our students can learn how rewarding gardening can be!</p> <p>Cultural Arts-Our Art, Music, Media Specialist and PE Team create "beautiful spaces" around campus with scholars' unique art work, multi-media products and performances (watch them using the QR code) as well as Robotics. Our talented students' work is displayed and highlighted all over our community! Our partnership with the Vero Beach Museum of Art (VBMA) and The Learning Alliance have afforded literacy-rich opportunities for our scholars in the Cultural Arts.</p> <p>Conscious Discipline - We practice seven skills to support our School Family: Composure, Assertiveness, Encouragement, Choices, Empathy, Positive Intent & Consequence. These skills, when utilized consciously, yields critical core values and life skills which include kindness, goal achievement, cooperation, problem solving and unity! We are visited by educators, local agencies and philanthropists from around the world as models for social emotional learning being a priority in our school!</p> <p>Community Partners are a HUGE asset for our school! Indian River Club, our neighborhood partner, provides mentors, greeters, First Tee & Summer Golf, classroom helpers, Yearbook Club and campus beautification; among other supports to our school. Big Brothers/Big Sisters Reads provides volunteers to work one on one with students on their early literacy skills in grades K through second. Youth Guidance provides after school programs for our students right here at our campus!</p>	<p>PE</p> <p>Music</p> <p>Media</p> <p>Art</p> <p>STEAM Lab (GR KG -1)</p>

CLUBS	SPORTS	AWARDS
Audubon Club	Girls on the Run - Girls	5-Star School Award (17-18, 18-19)
STEAM Club	First Tee Golf - Boys/Girls	White Glove Award (Fall 2019)
Percussion Ensemble	IRC Golf Scholarships - Boys/Girls	Perfect Audit-Book keeping (2011-2019)
Science Club	Lacrosse - Boys/Girls	PBIS Silver School Award (18-19)
Chorus		Gold Star Award (18-19)
Yearbook		
Safety Patrol		
Flag Detail		
IMPACT Gardening		



Liberty Magnet School School Profile



ENROLLMENT										
October 2018 (Survey 2) Student Enrollment by Grade and Ethnicity										
GD	White, Non-Hisp.		Black, Non-Hisp.		Hispanic		Other		Total	
	Ct	%	Ct	%	Ct	%	Ct	%	Ct	
KG	59	63.4%	8	8.6%	19	20.4%	7	7.5%	93	
1	64	70.3%	15	16.5%	11	12.1%	1	1.1%	91	
2	59	64.8%	12	13.2%	17	18.7%	3	3.3%	91	
3	61	67.0%	13	14.3%	8	8.8%	9	9.9%	91	
4	53	61.6%	12	14.0%	17	19.8%	4	4.7%	86	
5	57	63.3%	11	12.2%	16	17.8%	6	6.7%	90	

October 2018 Exceptional Student Program Information		18-19 Least Restrictive Environment	
Program	Number with Exceptionality	76.85%	
Exceptional Students	73		
Gifted (* = <10)	43		
Total	116		

Oct 2018 English Language Learners	
Count	20
Percent	3.7%

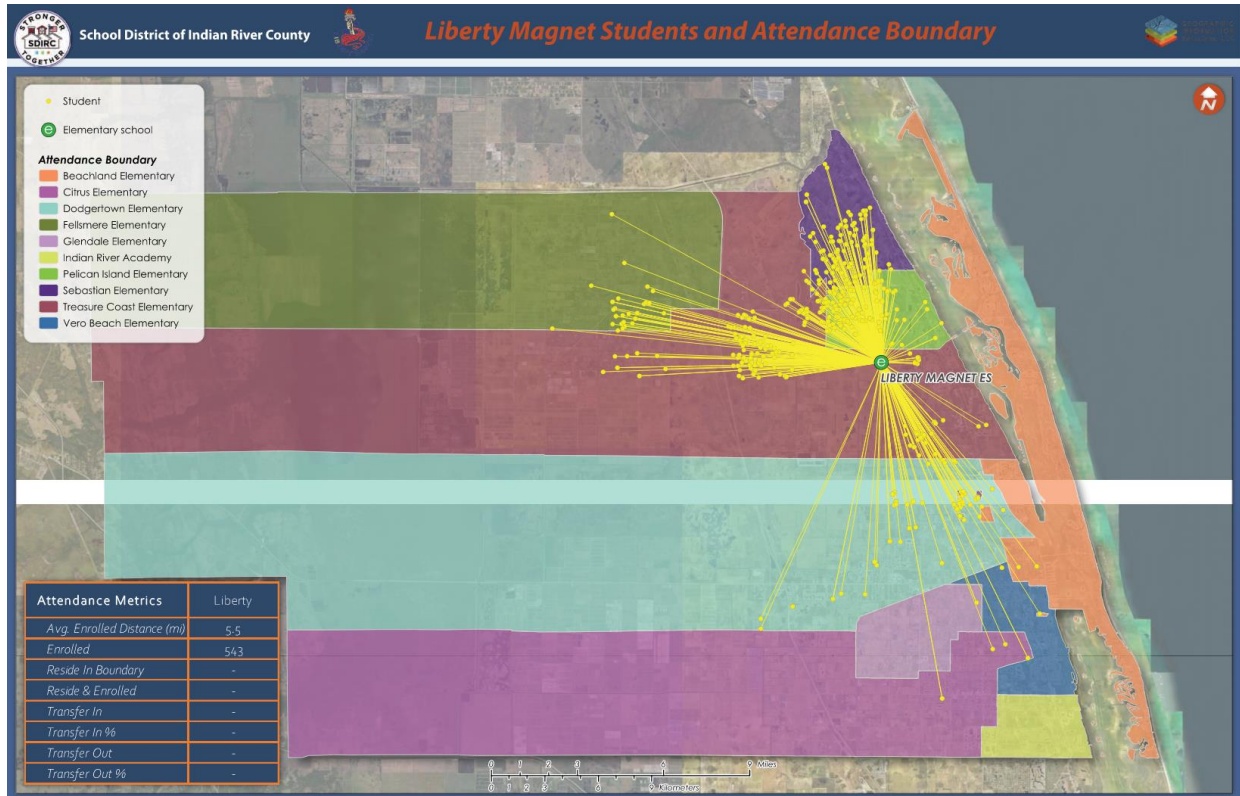
ACADEMIC PERFORMANCE			
School Grade			
2017-2018	2018-2019	Change	
A	A	➔	

Measures of School Grade				
Component	17-18	18-19	Change	
ELA	Achievement	75	78	⬆
	LG All	61	65	⬆
	LG Low 25%	48	42	⬇
Math	Achievement	79	80	⬆
	LG All	72	70	⬆
Science Achievement	LG Low 25%	63	40	⬇
		69	69	➔

SCHOOL CULTURE				
18-19 Climate Surveys				
% Answering Always and Often				
Subject	Parent	Student	Staff	
Success	96%	88%	NA	
Safety	97%	83%	100%	
Climate	96%	NA	100%	

18-19 Student Attendance				
% of students with an ADA below 90%, between 90-95% and above 95%				
ADA	<90%	90-95%	>95%	
% of Stud	8%	25%	67%	

18-19 Average Daily Attendance	
Instructional Staff	93.3%
Students	95.3%



Liberty Magnet School School Profile



PROGRAMS	ELECTIVES
International Baccalaureate Primary Years Program (PYP): The PYP is for elementary student that nurtures and develops young students as caring, active participants in a lifelong journey of learning. Through its inquiry-led, transdisciplinary framework, the PYP challenges students to think for themselves and take responsibility for their learning as they explore local and global issues and opportunities in real-life contexts.	Inquiry (Media)
Spanish Language class is offered to all students in grades KG - 5.	Music
Winners Walk Tall Character Building Program (KG-4)	PE
Life Skills (Grade 5)	Art
Learning Alliance Interventionist (KG-2)	Spanish
SDIRC Cluster Site for Students with Autism Spectrum Disorder	

CLUBS	SPORTS	AWARDS
Eagle Sound	Volleyball - Boys/Girls	"A" School (15-16, 16-17, 17-18, 18-19)
Eagle Ensemble	Casa Basketball Team - Boys/Girls	Five Star School Award (17-18, 18-19)
Millionaire Readers Club	Track & Field - Boys/Girls	Golden School Award (18-19)
Art Club	Liberty Twirlers	PBIS Model School Silver Award (18-19)
Spanish Club	Snag Golf - Boys/Girls	SNAG Gold Tournament-1st Place (2019)
Yearbook Club		Healthier US Challenge School (18-19)
IB K.I.D.S Club		National PTA School of Excellence 18-19
Volleyball Club		Florida PTA Awards (18-19)
Basketball Club		Grandparent Gold Award
Track Club		Spotlight on Men Award
Book Club		100% Faculty Membership Award
Twirlers		Celebrate 100% Membership Award
Safety Patrols		Kids at Heart (formerly Jumprope for Heart) raised over \$10,000 (2013-2019)
WEGL AM News		Kid's Tag Art 1st and 2nd Place Winners (18-19)
SSYRA Battle of the Books Club		
Young Author's Journalism Club		
Jogging Club		
Riverside Theater Performance Group		



Osceola Magnet School School Profile



ENROLLMENT										
October 2018 (Survey 2) Student Enrollment by Grade and Ethnicity										
GD	White, Non-Hisp.		Black, Non-Hisp.		Hispanic		Other		Total	
	Ct	%	Ct	%	Ct	%	Ct	%		
KG	53	58.9%	17	18.9%	12	13.3%	8	8.9%	90	
1	48	53.3%	14	15.6%	19	21.1%	9	10.0%	90	
2	56	62.2%	13	14.4%	16	17.8%	5	5.6%	90	
3	59	64.1%	13	14.1%	12	13.0%	8	8.7%	92	
4	54	62.1%	14	16.1%	13	14.9%	6	6.9%	87	
5	53	62.4%	10	11.8%	18	21.2%	4	4.7%	85	

October 2018 Exceptional Student Program Information	
Program	Number with Exceptionality
Exceptional Students	73
Gifted (* = <10)	31
Total	104

18-19 Least Restrictive Environment
86.27%

Oct 2018 English Language Learners	
Count	Percent
*	*

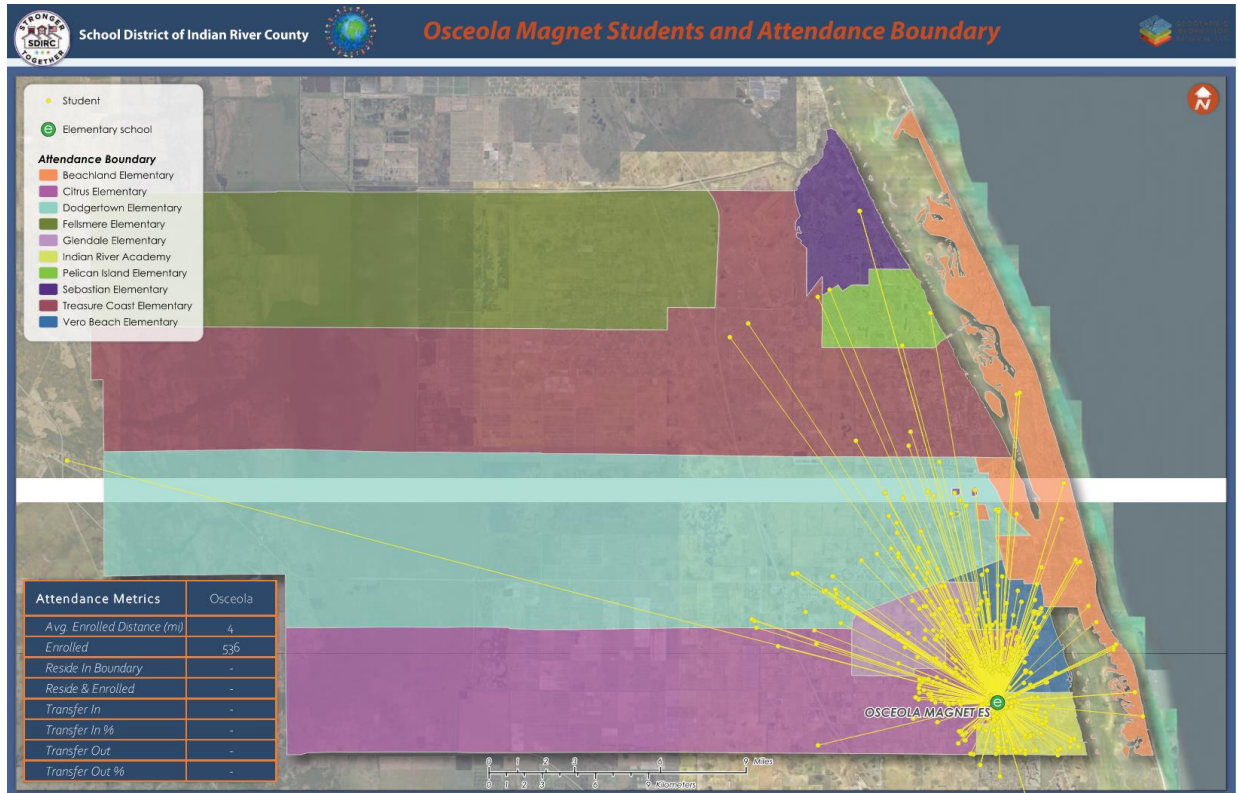
ACADEMIC PERFORMANCE			
School Grade			
2017-2018	2018-2019	Change	
A	A	→	

Measures of School Grade			
Component	17-18	18-19	Change
ELA	Achievement	78	78 →
	LG All	55	66 ↑
	LG Low 25%	33	54 ↑
Math	Achievement	82	79 ↓
	LG All	67	75 ↓
Science Achievement	LG Low 25%	63	52 ↓
		71	68 ↓

SCHOOL CULTURE			
18-19 Climate Surveys			
% Answering Always and Often			
Subject	Parent	Student	Staff
Success	98%	90%	NA
Safety	97%	91%	71%
Climate	97%	NA	43%

18-19 Student Attendance			
% of students with an ADA below 90%, between 90-95% and above 95%			
ADA	<90%	90-95%	>95%
% of Stud	5%	25%	70%

18-19 Average Daily Attendance	
Instructional Staff	Students
94.3%	95.7%



Osceola Magnet School School Profile



PROGRAMS	ELECTIVES
Magnet School Program: Science and Math Exploration	Music
Osceola Magnet Elementary is the first school in the county to incorporate S.T.E.A.M. (Science, Technology, Engineering, Arts, Mathematics) into daily classroom instruction. Our engaging and positive science focus at the elementary level has led to numerous former students entering into high-tech, science-based careers.	Art
Singapore Mathematics Instructional Strategies: The Singapore math method is a highly effective teaching approach originally developed by Singapore's Ministry of Education for Singapore public schools. The method has been widely adopted in various forms around the world over the past twenty years and is utilized in grades KG-5 at OMS.	Physical Education
Education Foundation Science Fair	Media & Technology
Gifted Enrichment Program	
Robotics – Beebots, Probots, Spheros, LegoRobotics	
Learning Alliance Literacy Volunteers	
Ocean Research & Conservation Association (ORCA) Partnership	
Science & Fine Arts Nights	
Positive Behavioral Interventions and Supports (PBIS)	
Child Safety Matters	
Extended Day	
Sanford Harmony	
K-3rd Grade Reading Interventionist	

CLUBS	SPORTS	AWARDS
Singers	Track & Field - Boys/Girls	Florida "A" School (16-17, 17-18, 18-19)
Recorders	Tinkling - Boys/Girls	Florida School of Excellence (16-17, 17-18, 18-19)
All-State	Running Club - Boys/Girls	Five Star School Award (17-18, 18-19)
Instrumental	Snag Golf - Boys/Girls	Golden School Award (17-18, 18-19)
ORFF	Girls on the Run - Girls	National PTA School of Excellence (17-18, 18-19)
All-County Honors Chorus	Sailing Squadron - Boys/Girls	Magnet Schools of America School of Distinction (17-18)
4th Grade Art Club		Magnet Schools of America School of Excellence (18-19)
5th Grade Art Club		Dads Take Your Child to School Day State Recognition (18-19)
Art "facts"		Teacher of the Year Finalist (18-19)
3rd Grade Creative Scientists		District "Best of Show" Art Competition (17-18, 18-19)
4th Grade Creative Scientists		First Place License Plate Tag Art (17-18)
Equations		"Tax Collector's Choice" License Plate Tag Art (17-18)
Mighty Mu		First Place District Book Battle (17-18)
Linguistics		Second Place District Book Battle (18-19)
Science Olympiad		Education Foundation High Impact Grant (18-19)
Student Council		Leukemia & Lymphoma Society Top Fundraiser (18-19)
Garden Club		All-State Chorus (16-17, 17-18, 18-19)
Patrols		
TV Crew		
Tech Crew		
Minecraft		
Twirlers		
Ukulele		
Green Team (Recycling)		



Pelican Island Elementary School Profile

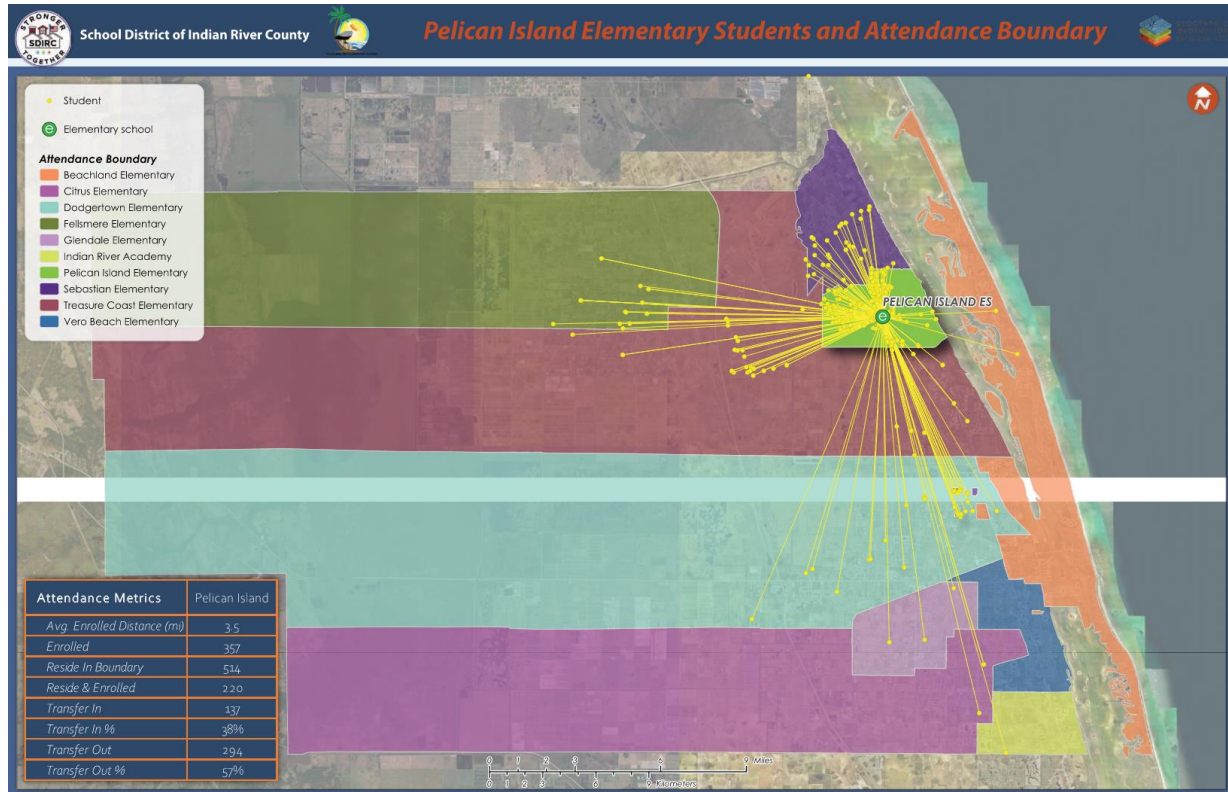


ENROLLMENT										
October 2018 (Survey 2) Student Enrollment by Grade and Ethnicity										
GD	White, Non-Hisp.		Black, Non-Hisp.		Hispanic		Other		Total	
	Ct	%	Ct	%	Ct	%	Ct	%	Ct	%
KG	30	62.5%	10	20.8%	6	12.5%	2	4.2%	48	
1	33	55.0%	19	31.7%	5	8.3%	3	5.0%	60	
2	37	52.1%	23	32.4%	11	15.5%	0	0.0%	71	
3	35	56.5%	22	35.5%	5	8.1%	0	0.0%	62	
4	37	64.9%	11	19.3%	8	14.0%	1	1.8%	57	
5	39	53.4%	24	32.9%	6	8.2%	4	5.5%	73	

October 2018 Exceptional Student Program Information		18-19 Least Restrictive Environment
Program	Number with Exceptionality	60.38%
Exceptional Students	112	
Gifted (* = <10)	*	
Total	112	

Oct 2018 English Language Learners	
Count	17
Percent	4.1%

ACADEMIC PERFORMANCE			SCHOOL CULTURE				
School Grade			18-19 Climate Surveys				
2017-2018	2018-2019	Change	% Answering Always and Often				
C	C	➔	Subject	Parent	Student	Staff	
Measures of School Grade			Success	88%	83%	NA	
Component	17-18	18-19	Change	Safety	90%	76%	56%
ELA Achievement	47	47	➔	Climate	93%	NA	37%
LG All	47	54	⬆️	18-19 Student Attendance			
LG Low 25%	43	65	⬆️	% of students with an ADA below 90%, between 90-95% and above 95%.			
Math Achievement	47	48	⬆️	ADA	<90%	90-95%	>95%
LG All	46	44	⬆️	% of Stud	13%	25%	62%
LG Low 25%	45	37	⬆️				
Science Achievement	50	40	⬆️	18-19 Average Daily Attendance			
			Instructional Staff	Students			
			93.9%	93.5%			



Pelican Island Elementary School School Profile



PROGRAMS	ELECTIVES
Pelican Island Elementary is a School of Environmental Science: a Pre-K-5 interdisciplinary approach that focuses on the study of the environment and the solution to environmental problems.	Music
Project Learning Tree: an environmental education program for K-5 to engage students in multidisciplinary, hands-on lessons both indoors and outdoors.	PE
Greenhouses: PIES has 3 greenhouses to grow fruits and vegetables that are transferred to our gardens by classes and clubs.	Media/Technology
Recycling program to support a healthier environment with biodegradable trays and a full recycling initiative in the cafeteria.	Art
21st Century: an extended learning opportunity for students and their families to continue to learn new skills and discover new abilities after the school day has ended	
Moonshot Academy: an extended learning opportunity supporting students with their literacy skills from 2017-2019	
Big Brother, Big Sister School-Based Mentoring: a tutoring and mentoring support for students in the primary grades, focusing on literacy and social/emotional learning)	
Special Olympics Young Athletes Program: a sport and play program for students with disabilities	
FAU CARD Partnership - Little OWLS Parent Academy: an annual training offered for families of students with autism spectrum disorder	
Kindergarten Parent Nights: a quarterly opportunity to learn ways to support kindergarten students with reading and math skills at home through games and play.	
Positive Behavior Intervention and Support School: a K-5 behavior system that helps all students achieve both socially and academically.	

CLUBS	SPORTS	AWARDS
school)	Running Club - Boys/Girls	Silver School (PBIS) (2019)
Garden Club	Track - Boys/Girls	Mardy Fish Grant (2017, 2018, 2019)
Green Team (recycling)	Special Olympics	Kids Heart Challenge - 3rd Place - Jump Rope for Heart (2019)
with Sunshine State Book trivia)	Young Athletes Program - Boys/Girls	Kids Tag Art Winner - 1st and 2nd Place (2019)
Millionaire's Club (Accelerated Reader)		Project Learning Tree School (2016-Present)
Safety Patrols		Green Apple Environmental Award (2017)
Music Groups (quarterly performances)		Indian River Soil and Water Conservation Poster Contest (2017, 2019)
Musical Theatre (quarterly performances)		5 Star School (2018)
focusing on Math skills)		



Rosewood Magnet School School Profile



ENROLLMENT										
October 2018 (Survey 2) Student Enrollment by Grade and Ethnicity										
GD	White, Non-Hisp.		Black, Non-Hisp.		Hispanic		Other		Total	
	Ct	%	Ct	%	Ct	%	Ct	%	Ct	%
KG	59	64.1%	18	19.6%	13	14.1%	2	2.2%	92	
1	63	70.0%	15	16.7%	8	8.9%	4	4.4%	90	
2	57	63.3%	15	16.7%	9	10.0%	9	10.0%	90	
3	68	73.9%	12	13.0%	6	6.5%	6	6.5%	92	
4	67	75.3%	9	10.1%	6	6.7%	7	7.9%	89	
5	68	78.2%	11	12.6%	7	8.0%	1	1.1%	87	

October 2018 Exceptional Student Program Information		18-19 Least Restrictive Environment	
Program	Number with Exceptionality	78.02%	
Exceptional Students	77		
Gifted (* = <10)	17		
Total	94		

Oct 2018 English Language Learners			
Count		Percent	
*		*	

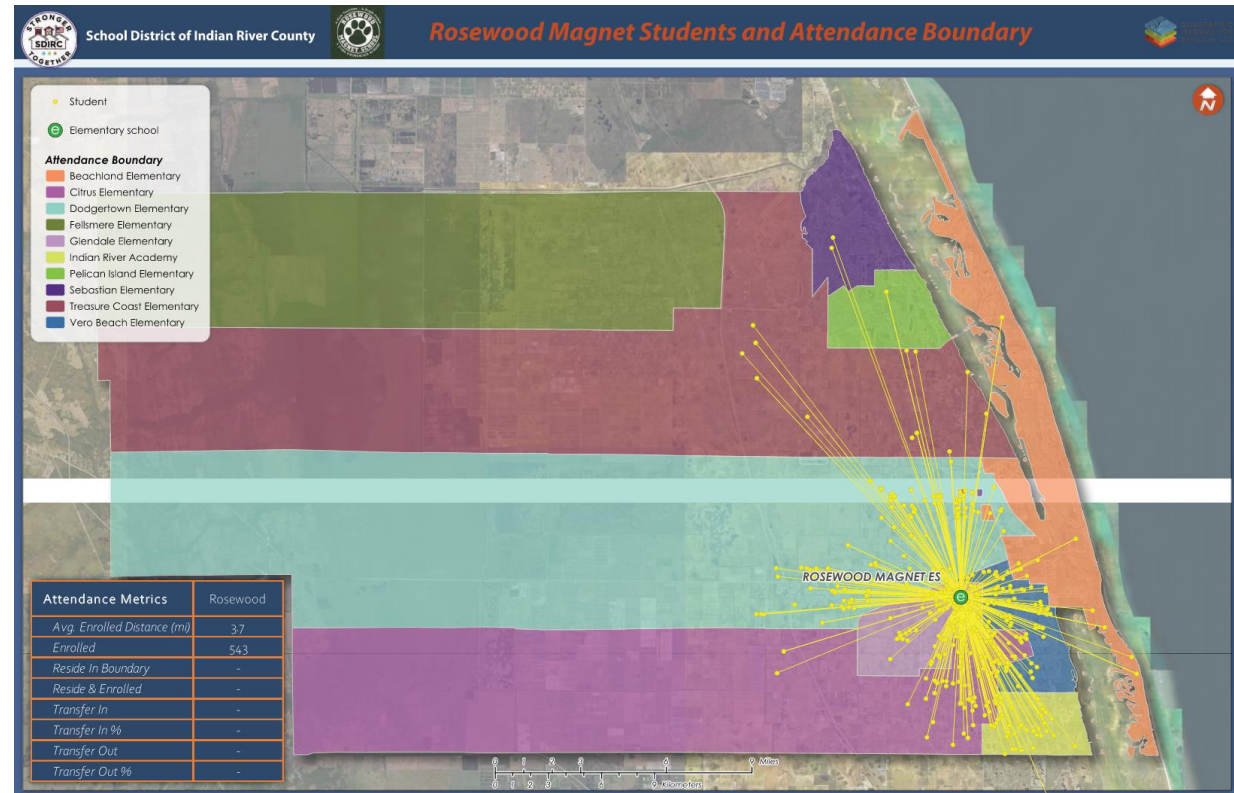
ACADEMIC PERFORMANCE			
School Grade	2017-2018		
	2018-2019	Change	
B	A	↑	

Measures of School Grade				
Component	17-18		Change	
	17-18	18-19		
ELA	Achievement	66	75	↑
	LG All	57	66	↑
	LG Low 25%	40	60	↑
Math	Achievement	73	77	↑
	LG All	72	70	↓
	LG Low 25%	53	57	↑
Science Achievement	64	76	↑	

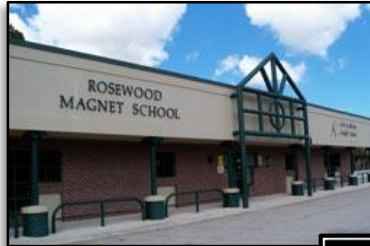
SCHOOL CULTURE			
18-19 Climate Surveys			
% Answering Always and Often			
Subject	Parent	Student	Staff
Success	96%	92%	NA
Safety	96%	85%	91%
Climate	95%	NA	65%

18-19 Student Attendance			
% of students with an ADA below 90%, between 90-95% and above 95%.			
ADA	<90%	90-95%	>95%
% of Stud	4%	22%	74%

18-19 Average Daily Attendance	
Instructional Staff	Students
94.3%	96.1%



Rosewood Magnet School School Profile



PROGRAMS		ELECTIVES
Rosewood Magnet emphasizes a Core Knowledge Curriculum - brings together history, science, music and art through hands-on learning experiences and culminating activities that cross content areas and have a strong tie to the performing arts.		Music
Maker space integrated into Media center		Media/STEM
STEAM days K-5		PE
Coding and Robotics introductions in some courses		Art
Recycling Program (17-18, 18-19, 19-20)		Chorus - Panther Performers
Active PTA and parent involvement		
After School Moonshot Academy K-3		
Summer Programs: Moonshot Academy with Literacy on the Lagoon and Literacy in Motion		
Sanford Harmony		
Third Grade Interventionist		

CLUBS	SPORTS	AWARDS
Coding Club	Snag Golf - Boys/Girls	School of Excellence (16-17, 17-18, 18-19)
Equations - Academic Games	Track Team (3-5) - Boys/Girls	Five Star Award (17-18, 18-19)
Presidents - Academic Games	Girls on the Run - Girls	Golden School Award (17-18, 18-19)
Book Battle	Tennis (Mardy Fish) - Boys/Girls	High Impact Grant Winners (18-19, 19-20)
Art Club	Junior Elites Special Olympics - Boys/Girls	District White Glove Award (18-19)
Student Council (Gd 4-5)		Media Center of Innovation Grant Winner (17-18)
5th Grade Patrols		Tropicana Speech District Winners
WPAW Morning Announcements (Gd 3-5)		- 16-17: Gd 4, 1st Place
Book Club (Gd 3-5)		- 17-18: Gd 5, 3rd Place
		- 18-19: Gd 4, 2nd Place
		- 18-19: Gd 5, 3rd Place
		Science Fair Overall Best in Show (16-17, 19-20)
		Academic Games 2nd Place in State (17-18)
		Battle of the Books District Winners
		- 16-17: 1st Place
		- 17-18: 3rd Place
		- 18-19: 2nd Place
		District Math Bee Winner (18-19)
		Grade "A" from FLDOE (16-17, 18-19)
		Teacher of the Year Top 5 Finalist District (19-20)



Sebastian Elementary School School Profile



ENROLLMENT									
October 2018 (Survey 2) Student Enrollment by Grade and Ethnicity									
GD	White, Non-Hisp.		Black, Non-Hisp.		Hispanic		Other		Total
	Ct	%	Ct	%	Ct	%	Ct	%	
KG	32	62.7%	11	21.6%	5	9.8%	3	5.9%	51
1	30	50.0%	19	31.7%	6	10.0%	5	8.3%	60
2	37	56.9%	15	23.1%	8	12.3%	5	7.7%	65
3	41	66.1%	11	17.7%	6	9.7%	4	6.5%	62
4	50	61.0%	19	23.2%	5	6.1%	8	9.8%	82
5	50	61.7%	18	22.2%	7	8.6%	6	7.4%	81

October 2018 Exceptional Student Program Information		18-19 Least Restrictive Environment
Program	Number with Exceptionality	79.51%
Exceptional Students	62	
Gifted (* = <10)	*	
Total	62	

Oct 2018 English Language Learners	
Count	11
Percent	2.7%

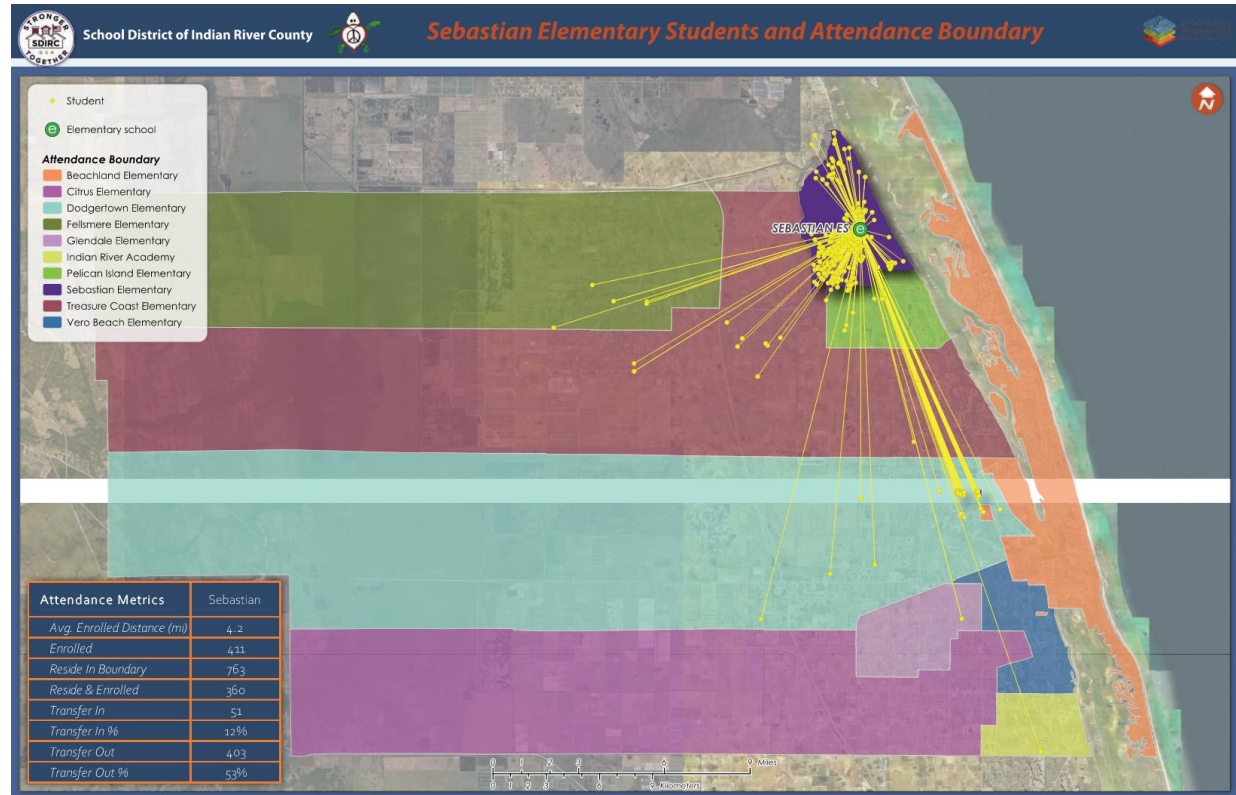
ACADEMIC PERFORMANCE		
School Grade		
2017-2018	2018-2019	Change
B	C	↓

Measures of School Grade				
Component	17-18	18-19	Change	
ELA	Achievement	59	53	↓
	LG All	66	57	↓
	LG Low 25%	61	49	↓
Math	Achievement	58	58	↔
	LG All	63	55	↓
Science Achievement	LG Low 25%	71	49	↓
		49	53	↑

SCHOOL CULTURE			
18-19 Climate Surveys			
% Answering Always and Often			
Subject	Parent	Student	Staff
Success	88%	85%	NA
Safety	89%	75%	90%
Climate	86%	NA	35%

18-19 Student Attendance			
% of students with an ADA below 90%, between 90-95% and above 95%			
ADA	<90%	90-95%	>95%
% of Stud	18%	31%	51%

18-19 Average Daily Attendance	
Instructional Staff	Students
95.1%	96.6%



Sebastian Elementary School

School Profile



PROGRAMS	ELECTIVES
Sebastian Elementary Fine Arts Academy: Concentrations & Electives in Music, Art, Dance and Drama	Media
At SES, we provide our students with a fine arts education that features various offerings in Music, Dance, Art, and Drama	PE
Participation in The Mall Art Show and the Children's Art Festival	Art
Kids Tag Art: districtwide competition between Grade 5 classes	Music
Art to Remember: Fundraiser	Computer
Literacy on the Lagoon Summer Program	
21st Century After- School Camp	
3rd Grade Interventionist	
After School Cheer and Dance Program Sposored by Mardy Fish Foundation	
National Elementary Honor Society	
Book Battle Club	
Fun at Bat After School Program	
Tropicana Speech Contest	

CLUBS	SPORTS	AWARDS
National Elementary Honor Society	Basketball - Boys/Girls	Five Star School Award (17-18, 18-19)
Safety Patrols	Track - Boys/Girls	
Chorus	Cheerleading (Sponsored by Mardy Fish Foundation) - Boys/Girls	
Bucket Drummers		



Treasure Coast Elementary School Profile



ENROLLMENT									
October 2018 (Survey 2) Student Enrollment by Grade and Ethnicity									
GD	White, Non-Hisp.		Black, Non-Hisp.		Hispanic		Other		Total
	Ct	%	Ct	%	Ct	%	Ct	%	
KG	55	69.6%	5	6.3%	16	20.3%	3	3.8%	79
1	63	65.6%	6	6.3%	21	21.9%	6	6.3%	96
2	68	66.7%	9	8.8%	18	17.6%	7	6.9%	102
3	92	69.2%	7	5.3%	25	18.8%	9	6.8%	133
4	68	65.4%	12	11.5%	16	15.4%	8	7.7%	104
5	91	61.5%	20	13.5%	30	20.3%	7	4.7%	148

October 2018 Exceptional Student Program Information		18-19 Least Restrictive Environment
Program	Number with Exceptionality	84.74%
Exceptional Students	106	
Gifted (* = <10)	10	
Total	116	

Oct 2018 English Language Learners	
Count	33
Percent	5.0%

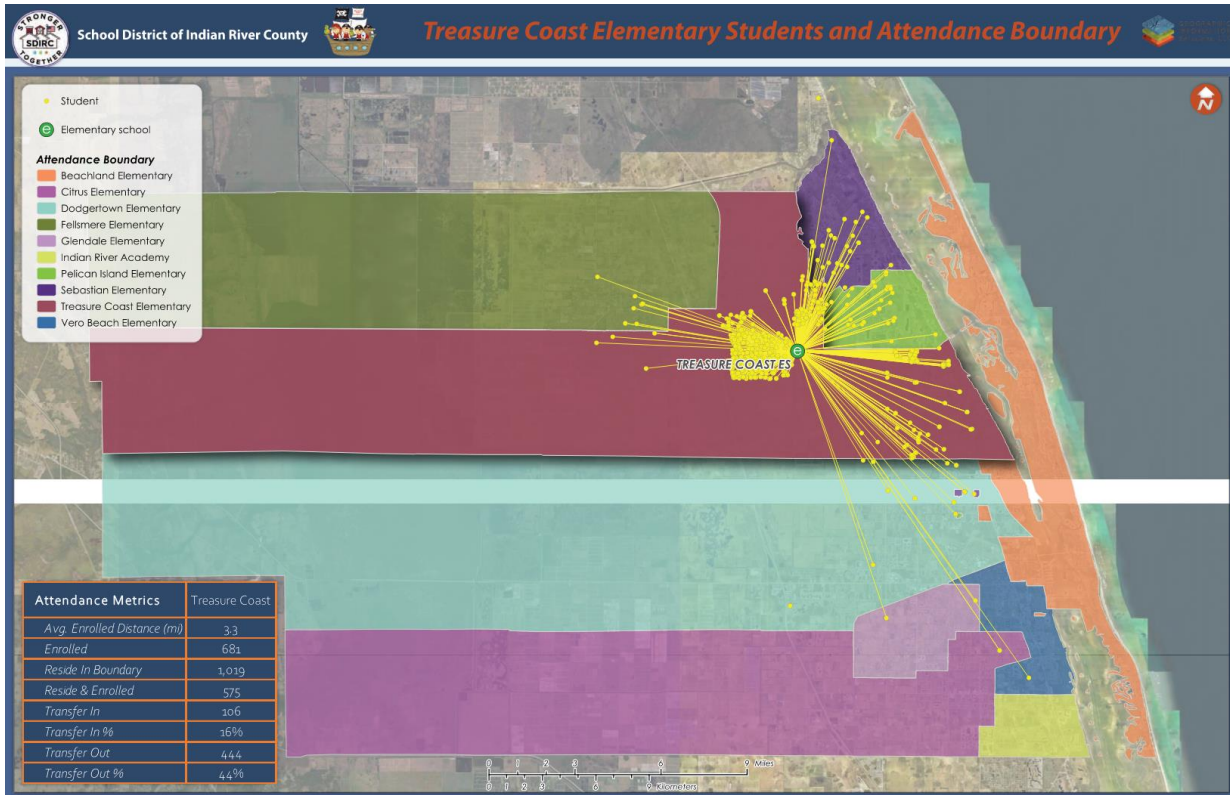
ACADEMIC PERFORMANCE			
School Grade	2017-2018	2018-2019	Change
	B	C	

Measures of School Grade				
Component	17-18	18-19	Change	
ELA	Achievement	57	58	↑
	LG All	50	53	↑
Math	Achievement	74	66	↓
	LG All	68	44	↓
Science Achievement	LG All	49	37	↓
		62	45	↓

SCHOOL CULTURE			
18-19 Climate Surveys			
% Answering Always and Often			
Subject	Parent	Student	Staff
Success	97%	86%	NA
Safety	99%	84%	87%
Climate	97%	NA	85%

18-19 Student Attendance			
% of students with an ADA below 90% between 90-95% and above 95%			
ADA	<90%	90-95%	>95%
% of Stud	14%	32%	54%

18-19 Average Daily Attendance	
Instructional Staff	Students
93.4%	93.9%



Treasure Coast Elementary School School Profile



PROGRAMS	ELECTIVES
21st Century After School Science and Tutoring Program	Art
A Day In the Life School Ambassador Program	PE
Life Skills - Training students to be leaders and problem solvers	Media
Volunteer Program for Parents and community	Music
FSA Boot Club for Students in 3rd thru 5th	
Positive Behavior Supports	
Mutli-Tiered System of Student Supports - Tiered Instruction to support ALL kids	
Literacy on the Lagoon Summer Program	
Literacy In Motion	
Mentoring Program	
Tropicana Speech	
Vounteer Program (Parents and Community)	
Parent Teacher Association	

CLUBS	SPORTS	AWARDS
Mardy Fish Garden Club	Pirates on the Run - Boys/Girls	PTA School of Excellence (19-20)
Chorus	Snag Golf - Boys/Girls	Five Star Award (17-18, 18-19)
Book Club- Students participate in	Track Team - Boys/Girls	Golden School Award (17-18, 18-19)
Art Club		Golden Shovel Award (17-18, 18-19)
Pay It Forward Student Services Club		The Soil & Water Conservations Art Contest (18-19)
Safety Patrol		VFW Teacher of the Year (Runner Up; 18-19, 19-20)
Academic Games		Penny for Patients Gold Award (17-18)
Book Battle		Penny for Patients Bronze Award (18-19)



Vero Beach Elementary School School Profile



ENROLLMENT										
October 2018 (Survey 2) Student Enrollment by Grade and Ethnicity										
GD	White, Non-Hisp.		Black, Non-Hisp.		Hispanic		Other		Total	
	Ct	%	Ct	%	Ct	%	Ct	%	Ct	%
KG	40	45.5%	24	27.3%	19	21.6%	5	5.7%	88	
1	35	38.5%	28	30.8%	21	23.1%	7	7.7%	91	
2	31	32.6%	25	26.3%	32	33.7%	7	7.4%	95	
3	40	37.4%	35	32.7%	29	27.1%	3	2.8%	107	
4	39	44.8%	16	18.4%	28	32.2%	4	4.6%	87	
5	33	33.0%	25	25.0%	32	32.0%	10	10.0%	100	

October 2018 Exceptional Student Program Information		18-19 Least Restrictive Environment
Program	Number with Exceptionality	69.09%
Exceptional Students	134	
Gifted (* = <10)	*	
Total	134	

Oct 2018 English Language Learners	
Count	75
Percent	12.1%

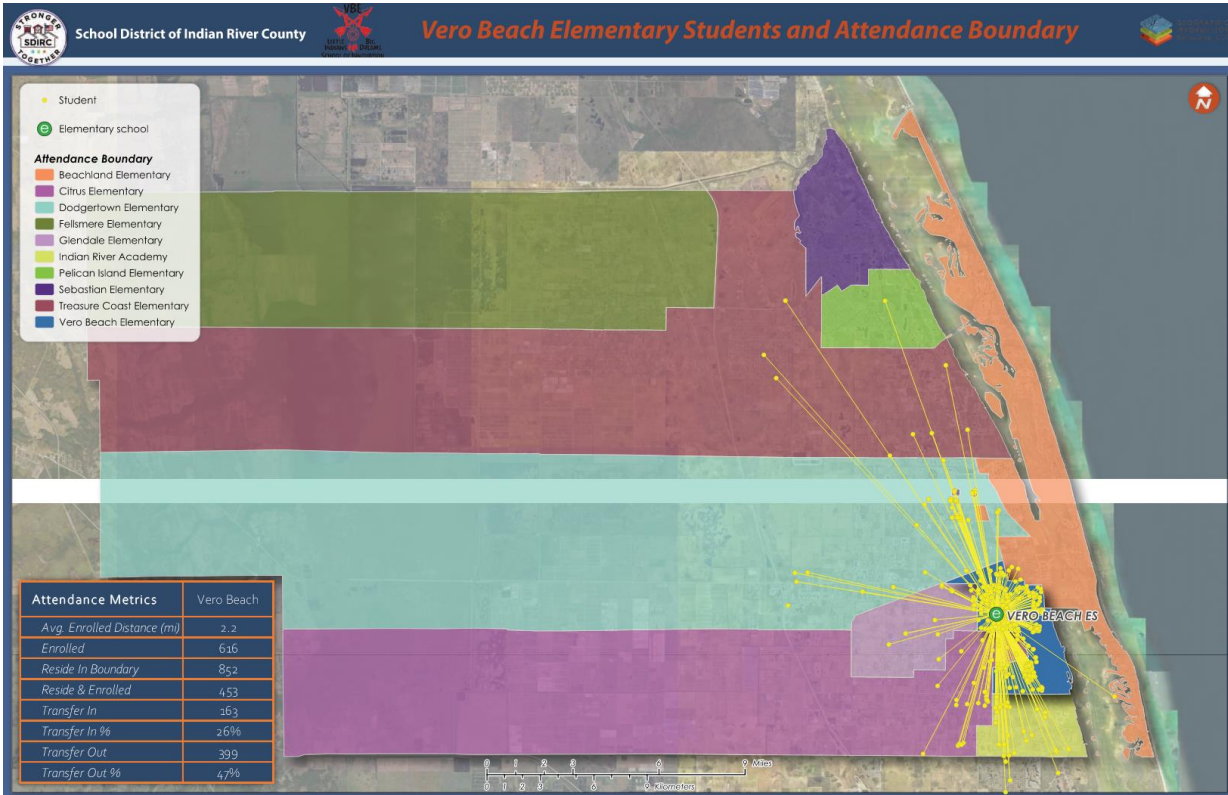
ACADEMIC PERFORMANCE			
School Grade	2017-2018	2018-2019	Change
	D	C	

Measures of School Grade				
Component	17-18	18-19	Change	
ELA	Achievement	30	39	↑
	LG All	46	44	↓
	LG Low 25%	50	57	↑
Math	Achievement	39	48	↑
	LG All	44	47	↑
Science Achievement	LG All	24	45	↑
	LG Low 25%	39	44	↑

SCHOOL CULTURE			
18-19 Climate Surveys			
% Answering Always and Often			
Subject	Parent	Student	Staff
Success	93%	82%	NA
Safety	94%	67%	93%
Climate	92%	NA	68%

18-19 Student Attendance			
% of students with an ADA below 90%, between 90-95% and above 90%.			
ADA	<90%	90-95%	>95%
% of Stud	18%	29%	53%

18-19 Average Daily Attendance	
Instructional Staff	Students
94.9%	92.3%



Vero Beach Elementary School School Profile



PROGRAMS

Vero Beach Elementary is a Project-Based Learning School
 Fully embedded Project Based Learning Program Kindergarten-1st grade
 Project Based Learning pilot academy 2nd-5th grade
 Moonshot School, primary literacy focus
 Positive Behavior Support School

ELECTIVES

5th Grade Full Band Program
 Science
 Art
 Band
 PE
 5th Grade Choice of Elective

CLUBS

National Elementary Honor Society
 Riverside Childrens Theatre
 Audobon
 Garden Club
 HIP- Helping Improve Performance Group
 Moonshot Academy
 Bridges to Literacy Program
 Tribal Phonics
 4th grade Lunch Book Bunch Club
 5th grade safety patrol club
 Green Team
 4th and 5th Grade Student Council
 Millionaire Readers Group
 Multicultural Club

SPORTS

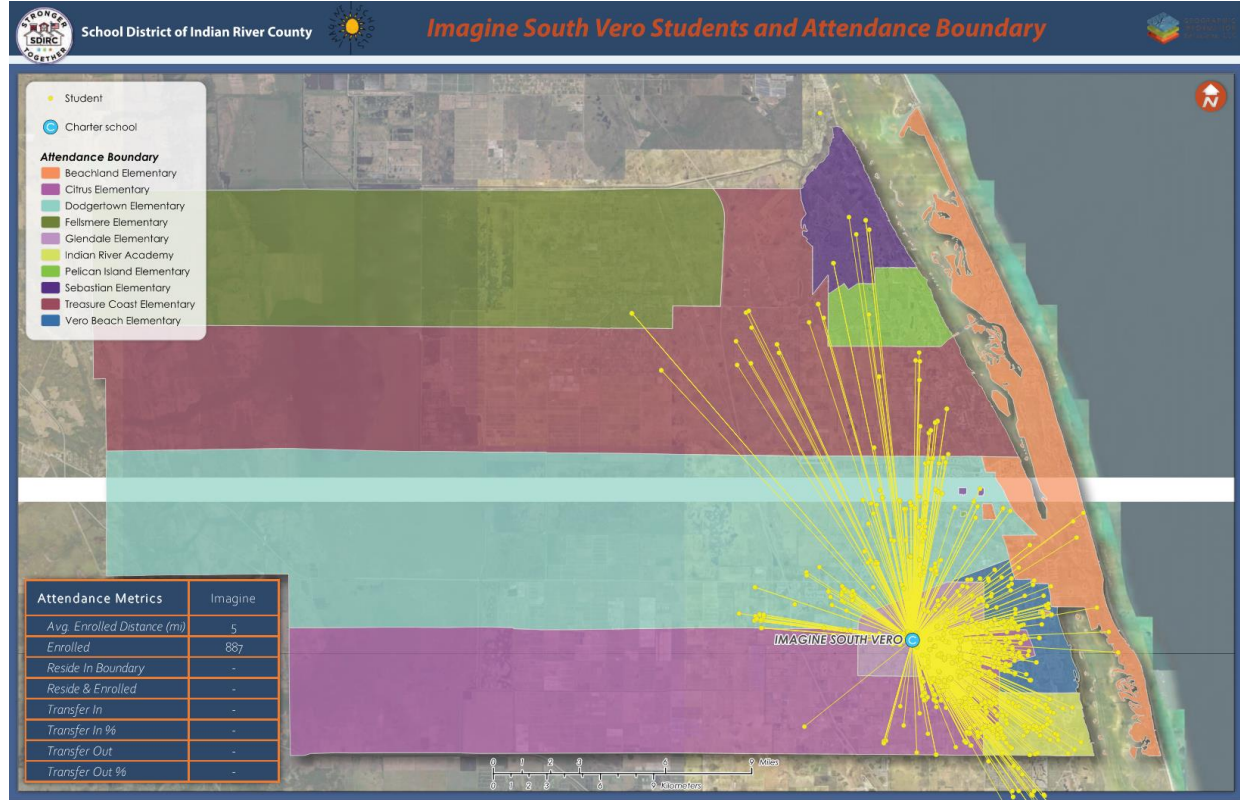
Basketball - Boys/Girls
 Track - Boys/Girls
 Cheerleading - Girls

AWARDS

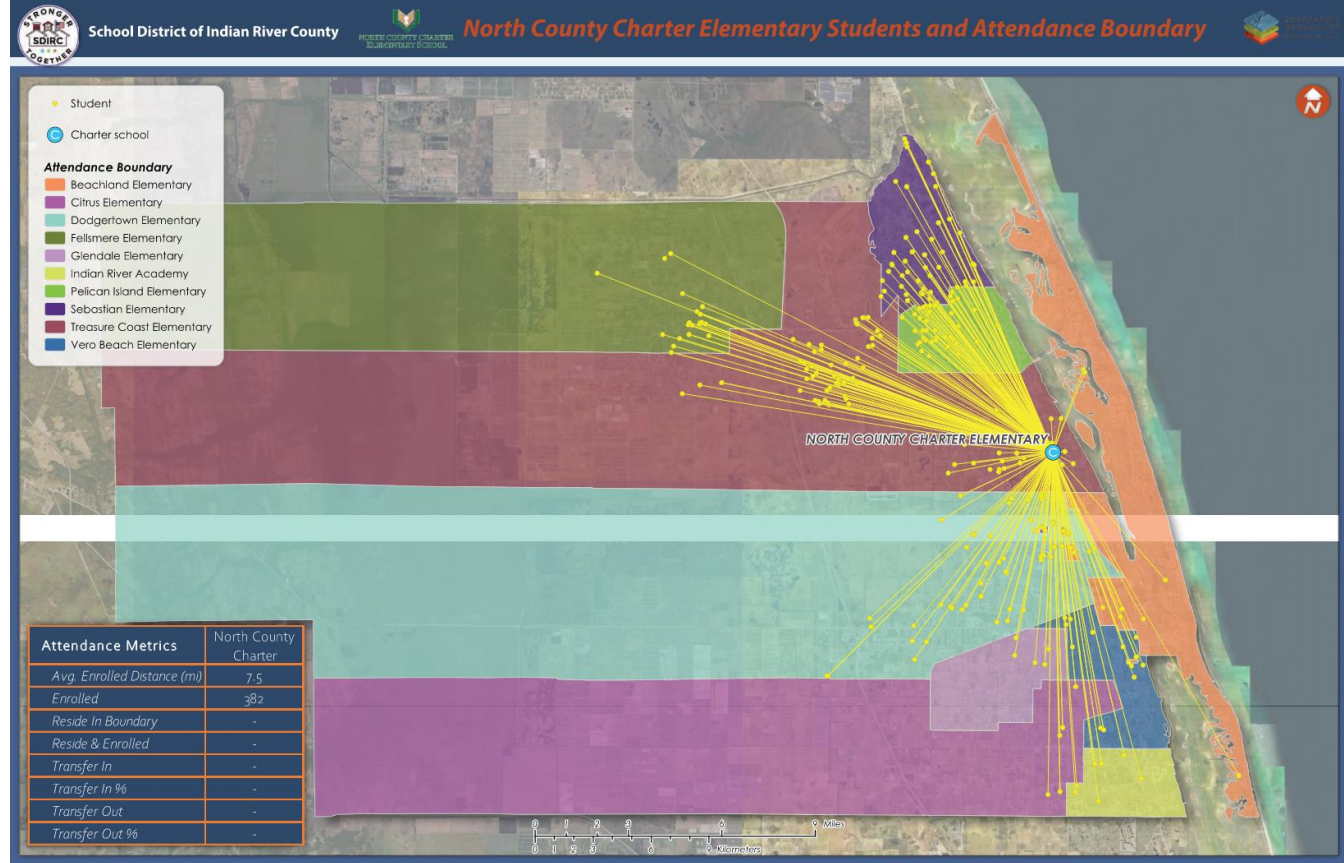
PBIS Gold Model School (18-19)
 Golden School Award (17-18, 18-19)
 Crayola Champion Creatively Alive Children Grant Winner (2017)
 Ed Foundation Grant Recipient- Kinder"Gardeners" Aeorponics (18-19)
 Ed Foundation Grant Recipient- Little indian, Big Reader, Primary Library (19-20)
 District Teacher of the Year and State Finalist (2018)
 District Principal of the Year, State Finalist Principal of the Year (2019)
 Elks Grant recipient for PBIS program (17-18, 18-19, and 19-20)
 CASA Girls Basketball Tournament Champions (2019)

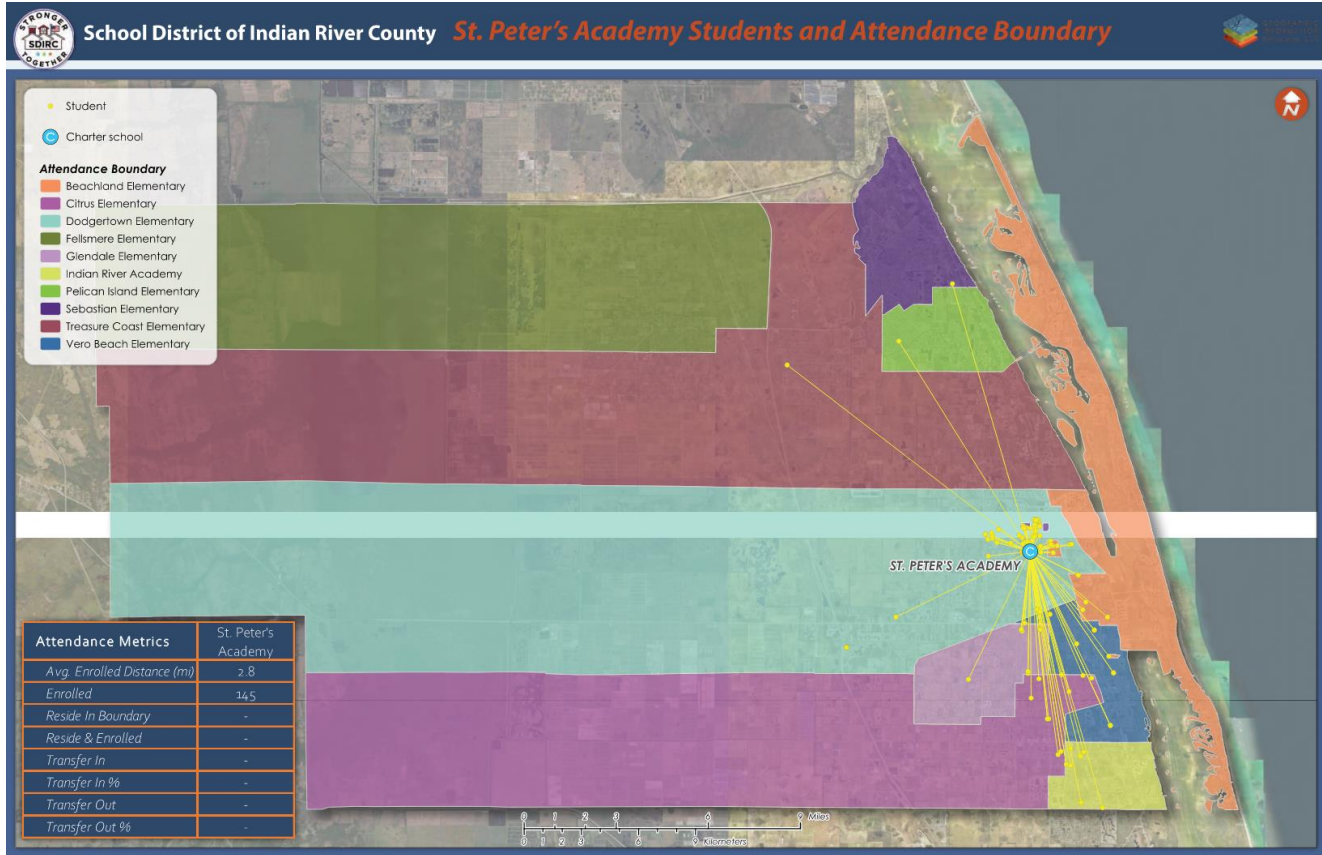


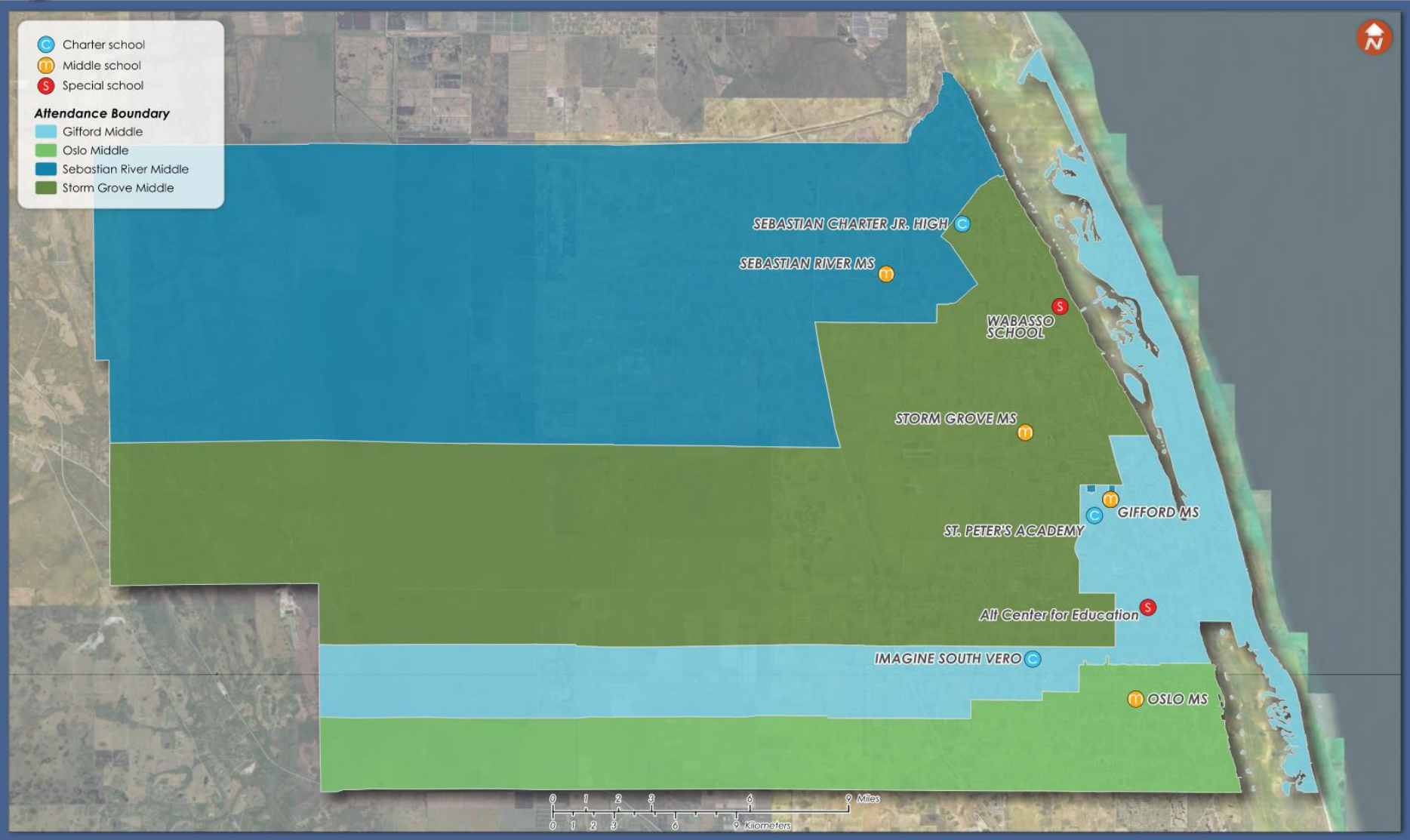
Imagine South Vero School School Profile



North County Charter School School Profile







Gifford Middle School School Profile



ENROLLMENT										
October 2018 (Survey 2) Student Enrollment by Grade and Ethnicity										
GD	White, Non-Hisp.		Black, Non-Hisp.		Hispanic		Other		Total	
	Ct	%	Ct	%	Ct	%	Ct	%	Ct	%
6	87	36.9%	96	40.7%	44	18.6%	9	3.8%	236	
7	94	45.9%	63	30.7%	35	17.1%	13	6.3%	205	
8	113	48.3%	77	32.9%	35	15.0%	9	3.8%	234	

October 2018 Exceptional Student Program Information	
Program	Number with Exceptionality
Exceptional Students	122
Gifted (* = <10)	66
Total	188

18-19 Least Restrictive Environment
85.1%

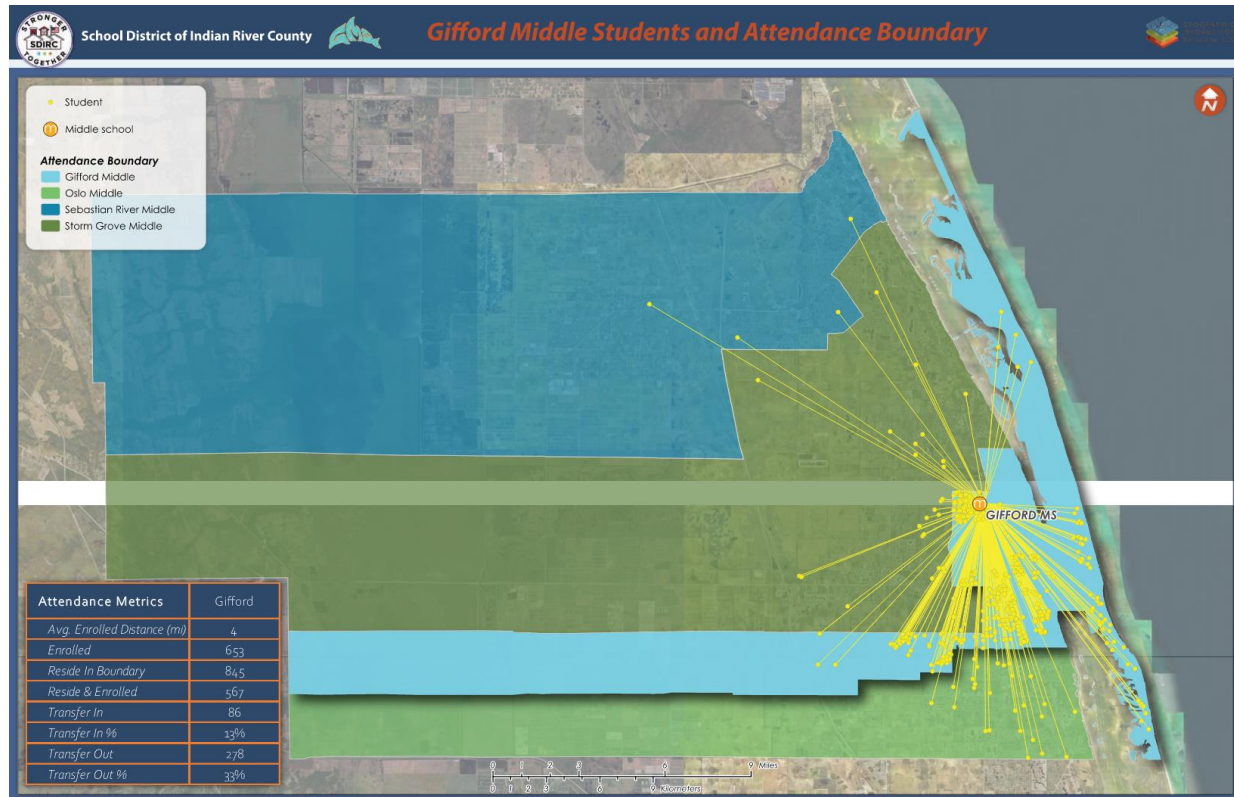
Oct 2018 English Language Learners	
Count	Percent
17	2.5%

ACADEMIC PERFORMANCE				
School Grade				
2017-2018	2018-2019	Change		
B	B	➔		
Measures of School Grade				
Component	17-18	18-19	Change	
ELA	Achievement	57	52	↓
	LG All	56	55	↓
	LG Low 25%	39	44	↑
Math	Achievement	62	54	↓
	LG All	67	50	↓
	LG Low 25%	55	36	↓
Science Achievement	64	48	↓	
Civics Achievement	68	69	↑	
MS Acceleration	80	76	↓	

SCHOOL CULTURE			
18-19 Climate Surveys			
% Answering Always and Often			
Subject	Parent	Student	Staff
Success	76%	63%	NA
Safety	65%	59%	44%
Climate	73%	NA	31%

18-19 Student Attendance			
% of students with an ADA below 90%, between 90-95% and above 95%.			
ADA	<90%	90-95%	>95%
% of Stud	21%	29%	50%

18-19 Average Daily Attendance	
Instructional Staff	Students
94.9%	92.3%





PROGRAMS	ELECTIVES
Emerging Technology	Visual Art
Clothes Closet: Due to the high needs of our low socio-economic students we have a full closet of unified approved shirts, pants, jackets, sweaters, underwear and socks.	Band
	Chorus
	Orchestra
	Spanish 1
	Information Technology
	Physical Education
	(Self-contained classes)
	Office Aide/Library Aide

CLUBS	SPORTS	AWARDS
Robotics	Flag Football - Boys/Girls	Five Star Award (18-19)
Achievers In Action	Basketball - Boys/Girls	Golden School Award (17-18)
Art Club	Soccer - Boys/Girls	Florida "B" School (17-18, 18-19)
National Junior Honors Society	Volleyball - Boys/Girls	Top "Relay for Life" Fundraising School (2010 - Present)
Student Council	Lacrosse - Boys/Girls	Designated Historic Site (18-19)
Heart-to-Heart	Baseball - Boys	Teacher of the Year District Finalist (17-18, 18-19)
Yearbook	Softball - Girls	Employee of the Year District Finalist (18-19)
Academic Games	Cheerleading - Girls	Education Foundation High Impact Grant (2019)
Mighty Mu		Gifford High School Legacy Library (2019 - Present)
SWAT (Students Working Against Tobacco)		PBIS School (2014 - Present)
Youth Sailing		SDIRC Health Assistant of the Year (2018)
Photography Club		



Oslo Middle School School Profile



ENROLLMENT									
October 2018 (Survey 2) Student Enrollment by Grade and Ethnicity									
GD	White, Non-Hisp.		Black, Non-Hisp.		Hispanic		Other		Total
	Ct	%	Ct	%	Ct	%	Ct	%	Ct
6	137	45.7%	69	23.0%	76	25.3%	18	6.0%	300
7	135	44.1%	83	27.1%	74	24.2%	14	4.6%	306
8	119	40.9%	66	22.7%	86	29.6%	20	6.9%	291

October 2018 Exceptional Student Program Information	
Program	Number with Exceptionality
Exceptional Students	146
Gifted (* = <10)	17
Total	163

18-19 Least Restrictive Environment
90.47%

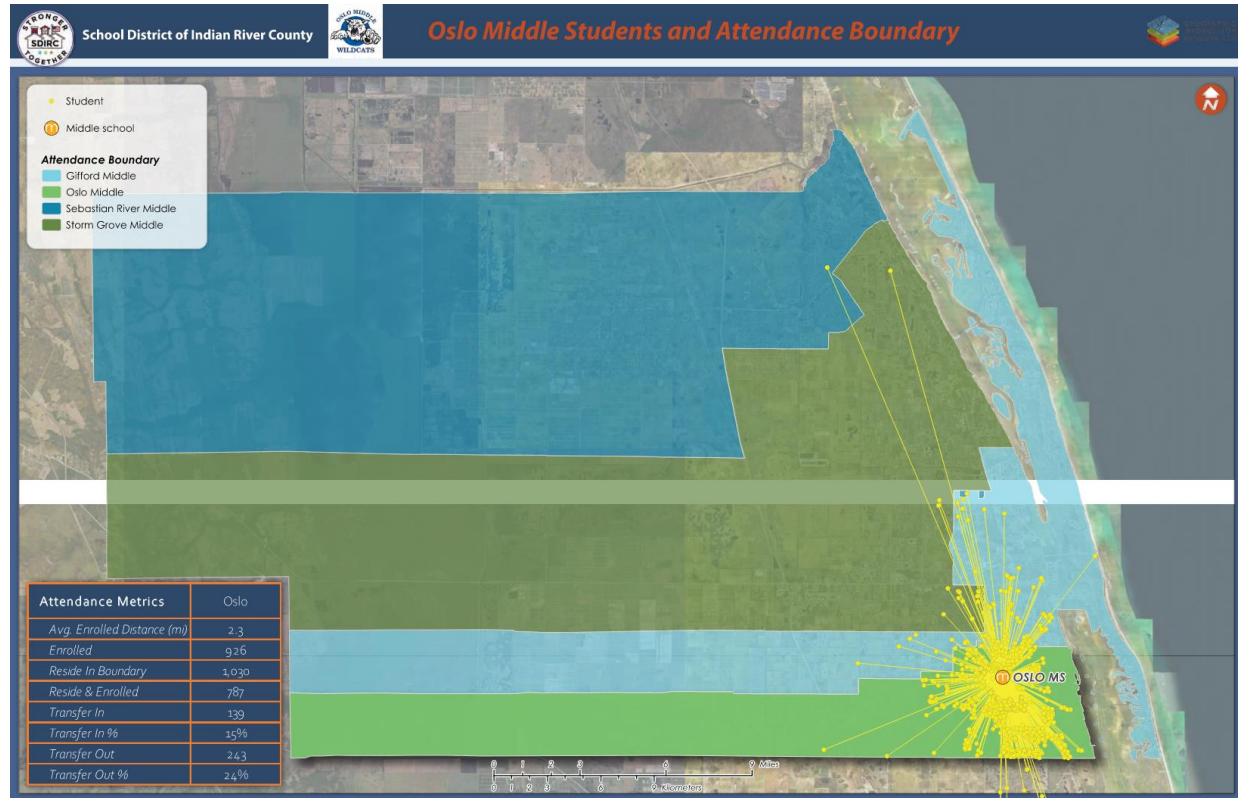
Oct 2018 English Language Learners	
Count	Percent
27	3.0%

ACADEMIC PERFORMANCE				
School Grade	2017-2018	2018-2019	Change	
	C	C	→	
Measures of School Grade				
Component	17-18	18-19	Change	
ELA	Achievement	40	44	↑
	LG All	50	54	↑
	LG Low 25%	44	43	↓
Math	Achievement	47	48	↑
	LG All	57	52	↓
	LG Low 25%	49	49	→
Science Achievement	42	45	↑	
Civics Achievement	48	62	↑	
MS Acceleration	64	62	↓	

SCHOOL CULTURE			
18-19 Climate Surveys			
% Answering Always and Often			
Subject	Parent	Student	Staff
Success	87%	61%	NA
Safety	83%	55%	76%
Climate	91%	NA	63%

18-19 Student Attendance			
% of students with an ADA below 90%, between 90-95% and above 95%			
ADA	<90%	90-95%	>95%
% of Stud	23%	26%	51%

18-19 Average Daily Attendance	
Instructional Staff	Students
93.9%	92.4%



Oslo Middle School School Profile



PROGRAMS	ELECTIVES
College Board Pre-AP Program: Springboard, an accelerated curriculum, is used in English Language Arts that provides more rigor and dynamic interaction with text.	Jazz Ensemble
CTE- Marketing Essentials - Grade 8: Focus on managerial skills, advertising basics, internet marketing through social media platforms.	Beginning Band
Spanish 1 - Grade 8: High School credit for basic conversational Spanish	Intermediate Band
National WeatherSTEM: Weather STEM station located on school grounds that tracks live weather data that is used in real world science.	Advanced Band
Project Based Learning: Student-centered approach that incorporates a deeper knowledge of real-world problems and challenges.	Beginning Chorus
	Advanced Chorus
	Beginning Orchestra 1
	Intermediate Orchestra 2
	Advanced Orchestra 3
	Chamber Orchestra
	Visual Art
	Digital Art and Design 1
	Creative Photo 1
	Library Skills & Info Literacy
	Info & Communication Tech
	Marketing Essentials
	Fitness Grade 6
	Team Sports Grd 7
	Individual/Dual Sports Grade 8
	Spanish 1

CLUBS	SPORTS	AWARDS
NJHS	Soccer - Boys/Girls	Five Star Award (15-16, 16-17, 18-19)
Student Council	Volleyball - Girls	Golden School Award (17-18, 18-19)
Multicultural Club	Basketball - Boys/Girls	Kind School Award (17-18, 18-19)
Achievers in Action	Cross Country - Boys/Girls	Harvard Common Caring School Award (16-17)
Students Who Code	Baseball - Boys	Lifestyle Homes Education Renovation Grant (17-18)
Kite Club	Softball - Girls	2018 Educational Alliance School Grant (17-18)
SWAT	Lacrosse - Boys/Girls	2019 Educational Alliance School Grant (18-19)
Book Club	Flag Football - Boys/Girls	Verizon \$20,000 STEM Grant (15-16)
Intramurals		
STEAM Club		
Art Club		



Sebastian River Middle School School Profile



ENROLLMENT									
October 2018 (Survey 2) Student Enrollment by Grade and Ethnicity									
GD	White, Non-Hisp.		Black, Non-Hisp.		Hispanic		Other		Total
	Ct	%	Ct	%	Ct	%	Ct	%	
6	137	45.5%	34	11.3%	118	39.2%	12	4.0%	301
7	139	44.0%	39	12.3%	122	38.6%	16	5.1%	316
8	165	52.1%	29	9.1%	110	34.7%	13	4.1%	317

October 2018 Exceptional Student Program Information		18-19 Least Restrictive Environment	
Program	Number with Exceptionality	90.72%	
Exceptional Students	115		
Gifted (* = <10)	38		
Total	153		

Oct 2018 English Language Learners	
Count	20
Percent	2.1%

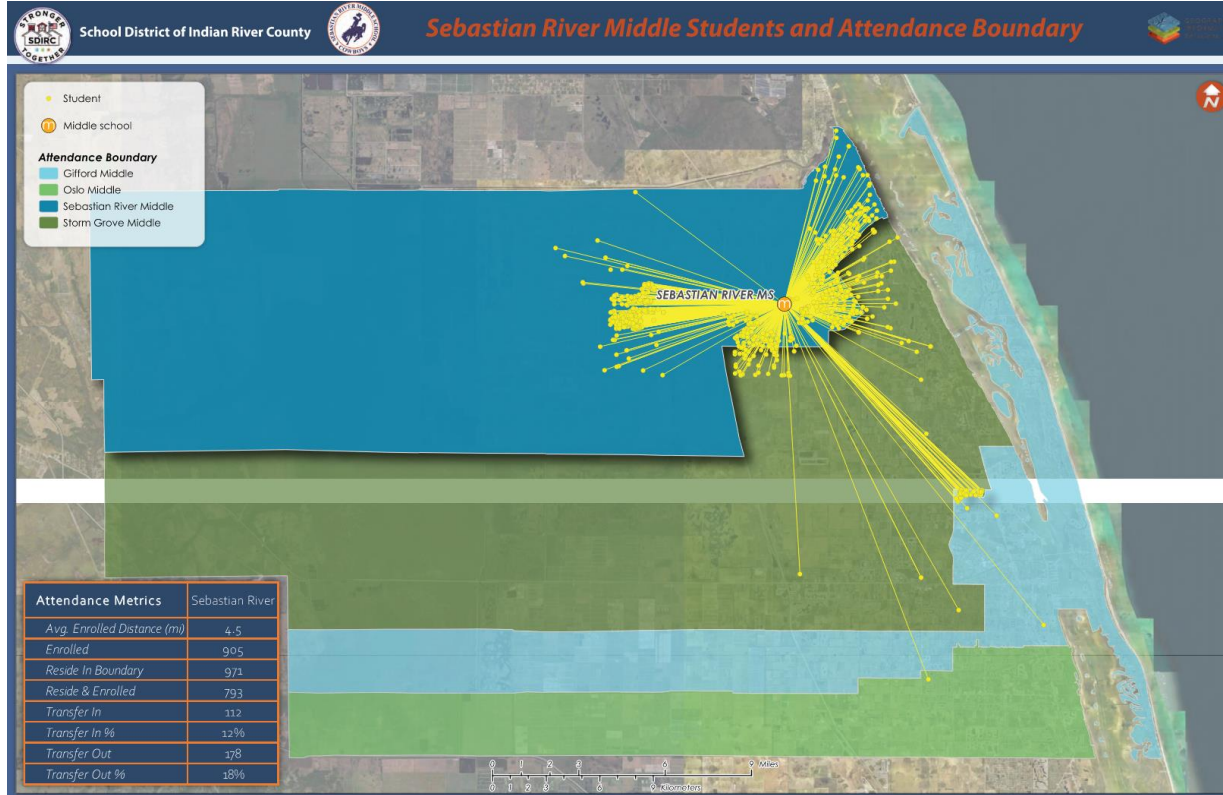
ACADEMIC PERFORMANCE			
School Grade	Change		
	2017-2018	2018-2019	
C		B	↑

Measures of School Grade				
Component	17-18	18-19	Change	
ELA	Achievement	43	49	↑
	LG All	45	51	↑
	LG Low 25%	37	39	↑
Math	Achievement	52	62	↑
	LG All	55	67	↑
	LG Low 25%	39	61	↑
Science Achievement	42	46	↑	
Civics Achievement	70	72	↑	
MS Acceleration	68	57	↓	

SCHOOL CULTURE			
18-19 Climate Surveys			
% Answering Always and Often			
Subject	Parent	Student	Staff
Success	92%	62%	NA
Safety	90%	57%	79%
Climate	92%	NA	64%

18-19 Student Attendance			
% of students with an ADA below 90%, between 90-95% and above 95%			
ADA	<90%	90-95%	>95%
% of Stud	16%	25%	58%

18-19 Average Daily Attendance	
Instructional Staff	94.9%
Students	94.2%



Sebastian River Middle School School Profile



PROGRAMS	ELECTIVES
IB Middle Years Program: SRMS has been an authorized IB World School certified by the International Baccalaureate Organization (IBO) since 2005. The mission of SRMS is to develop citizens who are nationally and globally conscious, possess personal integrity, and pursue academic excellence through content area literacy.	Band
Positive Behavior Intervention and Supports: a range of research-based strategies used to increase quality of life and decrease problem behavior by teaching new skills and making changes in a person's environment	Choir
Digital Design: a semester class where students use Adobe and other digital tools to explore the art of digital design	All Boys Choir
Emerging Leaders: course offered to students wishing to be involved in leadership activities on campus	Basic Musicianship
Marketing Essentials: course that explores the technical knowledge and skills needed to prepare for further education and careers in marketing	Yearbook
	Blueprint
	Keyboarding
	Spanish, IB Spanish, Beginning Spanish
	Art
	Physical Education
	Drama
	Emerging Leaders
	Office Aide/Peer Mentor

CLUBS	SPORTS	AWARDS
Jazz Club	Volleyball - Girls	FLDOE School Grade--B (18-19)
Drumline Club	Soccer - Boys/Girls	PBIS Model School--Silver (18-19)
Flag Corp	Basketball - Boys	FLDOE Five Star Award (18-19)
Leaders of Tomorrow	Basketball - Girls	Choir Superior Ratings (16-17, 17-18, 18-19)
National Junior Honor Society	Cross Country - Boys/Girls	Concert Band--Superior/Excellent Ratings (16-17, 17-18, 18-19)
Student Council	Golf - Boys/Girls	Jazz Band--Superior Rankings (16-17, 17-18, 18-19)
Band Tutoring	Softball - Girls	District Soccer Tournament Champions (18-19, 19-20)
Drama Club	Baseball - Boys	Softball District Champions (17-18)
Knitting Club	Lacrosse - Girls	Baseball District Champions (18-19)
ELA	Lacrosse - Boys	Cross Country District Runner-up (19-20)
Guardians of the Lagoon	Flag Football - Boys/Girls	Elks Club American Essay Contest Winners (16-17, 17-18, 18-19)
First Priority--Faith Based Club	Tennis - Boys/Girls	VFW Essay Contest Winner (18-19, 19-20)
SWAT--Sudents Working Against Tobacco	Cheerleading - Boys/Girls	
Chess Club		
Table Tennis		



Storm Grove Middle School School Profile



ENROLLMENT									
October 2018 (Survey 2) Student Enrollment by Grade and Ethnicity									
GD	White, Non-Hisp.		Black, Non-Hisp.		Hispanic		Other		Total
	Ct	%	Ct	%	Ct	%	Ct	%	Ct
6	179	54.7%	32	9.8%	88	26.9%	28	8.6%	327
7	234	61.3%	52	13.6%	73	19.1%	23	6.0%	382
8	223	66.8%	41	12.3%	55	16.5%	15	4.5%	334

October 2018 Exceptional Student Program Information	
Program	Number with Exceptionality
Exceptional Students	164
Gifted (* = <10)	53
Total	217

18-19 Least Restrictive Environment
79.64%

Oct 2018 English Language Learners	
Count	Percent
24	2.3%

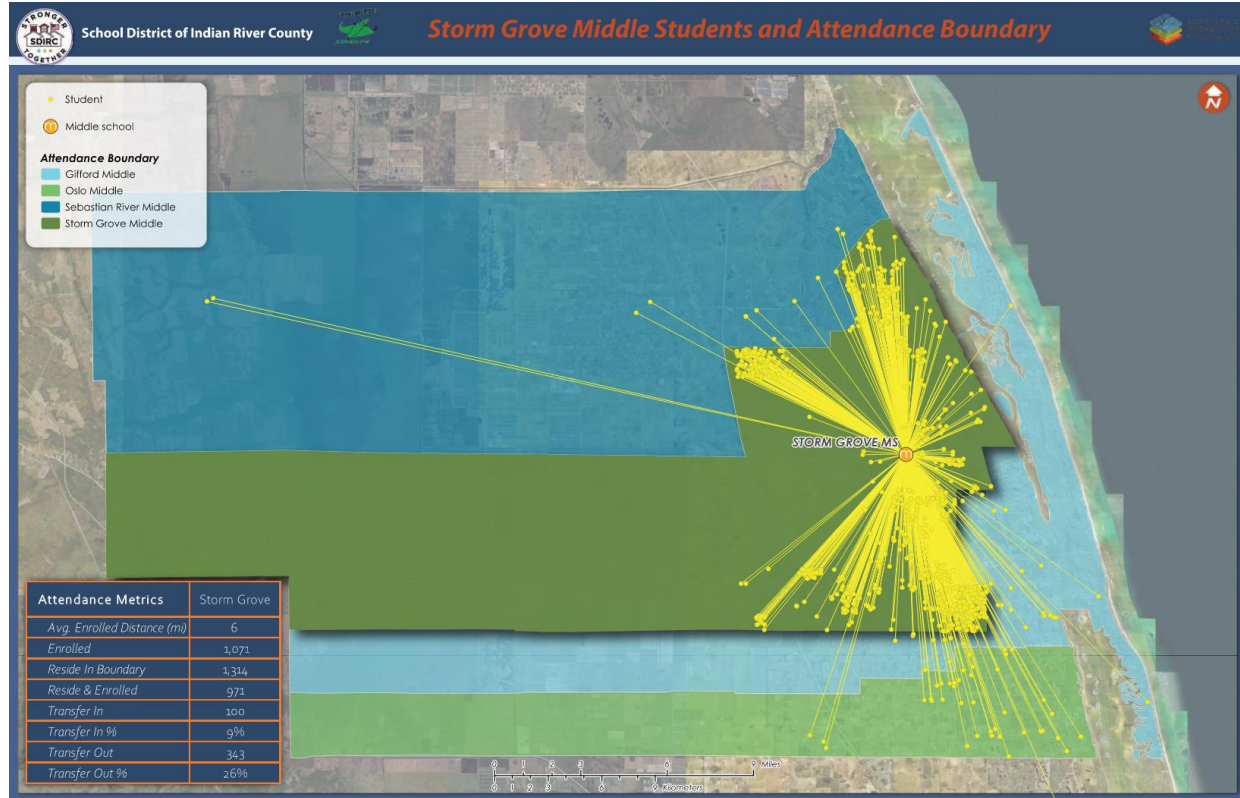
ACADEMIC PERFORMANCE		
School Grade		
2017-2018	2018-2019	Change
C	C	→

Measures of School Grade				
Component	17-18	18-19	Change	
ELA	Achievement	49	54	↑
	LG All	48	54	↑
	LG Low 25%	42	42	→
Math	Achievement	61	56	↓
	LG All	65	52	↓
	LG Low 25%	48	38	↓
Science Achievement	57	49	↓	
Civics Achievement	66	67	↑	
MS Acceleration	41	38	↓	

SCHOOL CULTURE			
18-19 Climate Surveys			
% Answering Always and Often			
Subject	Parent	Student	Staff
Success	93%	64%	NA
Safety	92%	63%	84%
Climate	92%	NA	62%

18-19 Student Attendance			
% of students with an ADA below 50% between 90-95% and above 95%			
ADA	<90%	90-95%	>95%
% of Stud	20%	26%	54%

18-19 Average Daily Attendance	
Instructional Staff	Students
94.3%	93.2%



Storm Grove Middle School School Profile

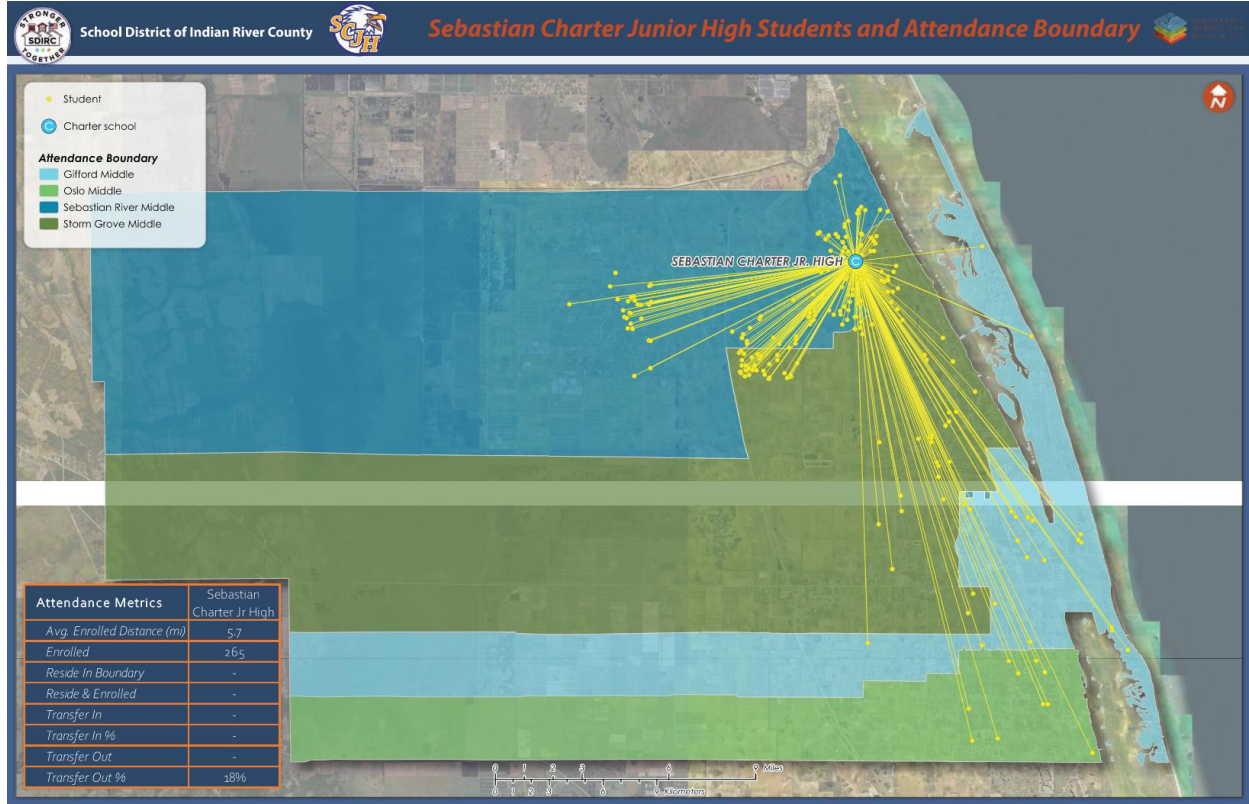


PROGRAMS	ELECTIVES
Accessible clothes closet for students in need	Jazz Ensemble
Parent Teacher Association	Beginning Band
iReady – an online program to support reading and math	Intermediate Band
Accelerated Reader: a program to track student knowledge of books, celebrations for student success held each quarter	Advanced Band
Crossover Mission tutors for struggling students	Beginning Chorus
School Wide Recycling Program	Advanced Chorus
Exchange Club Student of the month	Drama
Stellar Stingrays (students of the month): recognizes Role Model, Respectful, and Responsible students for each grade level.	Beginning Orchestra 1
PBIS Gold School – Positive Behavior Model School with activities and rewards for reinforcing Positive Behavior	Intermediate Orchestra 2
FSA/EOC bootcamps - special days each spring after school & Saturdays to prep students for state testing	Advanced Orchestra 3
	Chamber Orchestra
	Visual Art
	Library Skills & Info Literacy
	Info & Communication Tech (credit)
	Fitness Grade 6
	Team Sports Grd 7
	Individual/Dual Sports Grade 8
	Spanish 1 (High School credit)
	Intro to Spanish
	Creative Writing
	Peer Mentor

CLUBS	SPORTS	AWARDS
Book Club	Volleyball - Girls	Five Star Award (17-18, 18-19)
Junior National Honor Society	Basketball - Boys/Girls	Silver School Award (2019)
Drama	Soccer - Boys/Girls	Gold School Award (2019)
Student Council	Cheerleading - Girls	Kindness Challenge (17-18, 18-19)
Yearbook	Softball - Girls	Choir Superior/Excellent Ratings (16-17, 17-18, 18-19)
Girls Who Code	Baseball - Boys	Band – Overall Superior rating at MPA 8 out of 10 years
	Lacrosse - Boys/Girls	Symphonic Band--Superior Rankings (16-17, 17-18, 18-19)
	Cross country - Boys/Girls	Advanced & Chamber Orchestra – Superior/Excellent Ratings (16-17, 17-18, 18-19)
	Golf - Boys/Girls	Education Foundation High Impact Grant 2018
	Flag Football - Boys/Girls	Relay for Life Sponsor – 11 years
	Tennis - Boys/Girls	Concert Band - Superior/Excellent Ratings (16-17, 17-18, 18-19)
		Jazz Band - Superior Rankings (16-17, 17-18, 18-19)

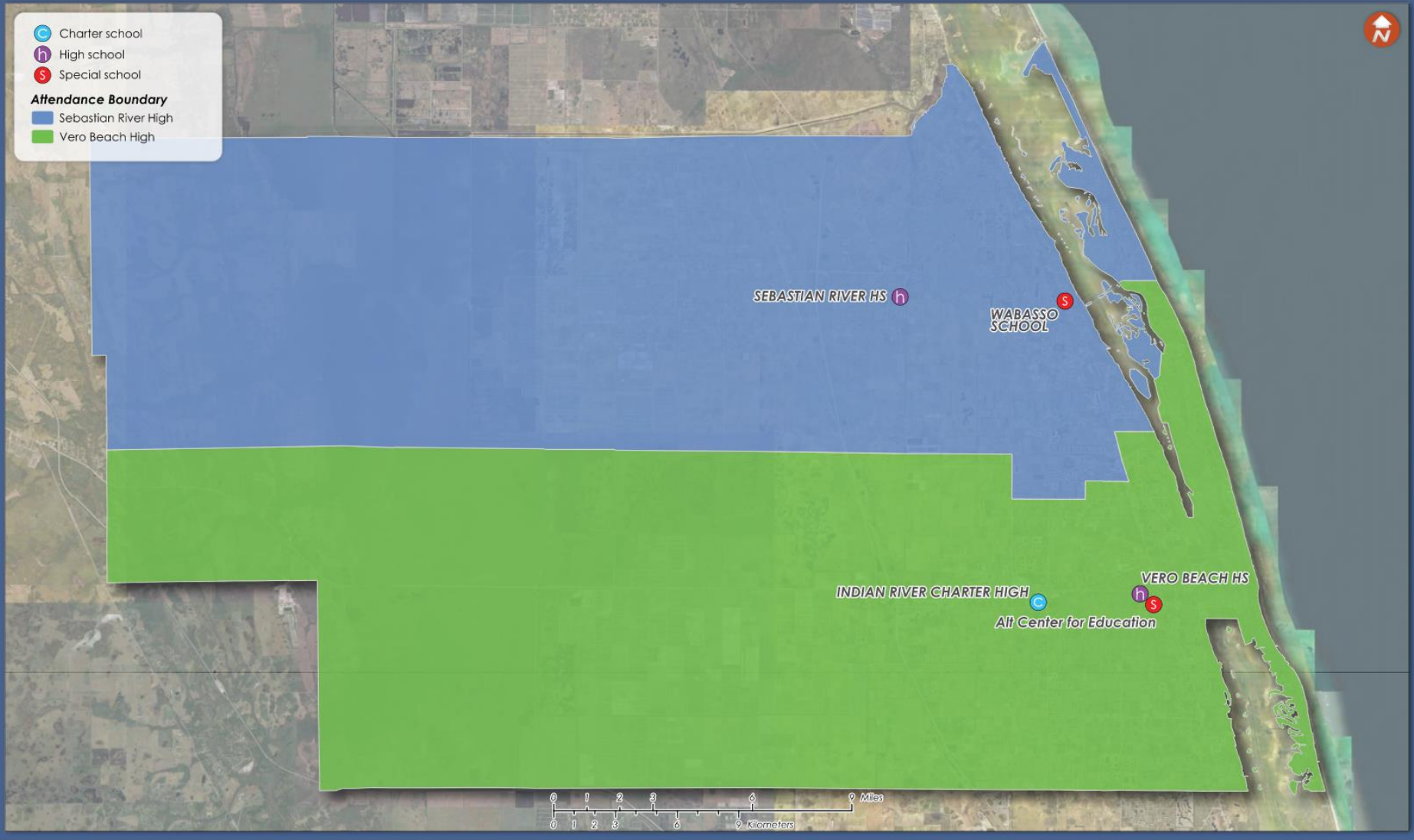


Sebastian Charter Jr. High School School Profile





- C Charter school
 - h High school
 - S Special school
- Attendance Boundary**
- Sebastian River High
 - Vero Beach High



Sebastian River High School School Profile



ENROLLMENT										
October 2018 (Survey 2) Student Enrollment by Grade and Ethnicity										
GD	White, Non-Hisp.		Black, Non-Hisp.		Hispanic		Other		Total	
	Ct	%	Ct	%	Ct	%	Ct	%	Ct	%
9	282	47.0%	73	12.2%	213	35.5%	32	5.3%	600	
10	246	51.7%	51	10.7%	160	33.6%	19	4.0%	476	
11	232	53.5%	62	14.3%	130	30.0%	10	2.3%	434	
12	231	56.1%	45	10.9%	119	28.9%	17	4.1%	412	

October 2018 Exceptional Student Program Information	
Program	Number with Exceptionality
Exceptional Students	272
Gifted (* = <10)	56
Total	328

18-19 Least Restrictive Environment
90.37%

Oct 2018 English Language Learners	
Count	Percent
39	2.0%

ACADEMIC PERFORMANCE		
School Grade		
2017-2018	2018-2019	Change
B	C	↓

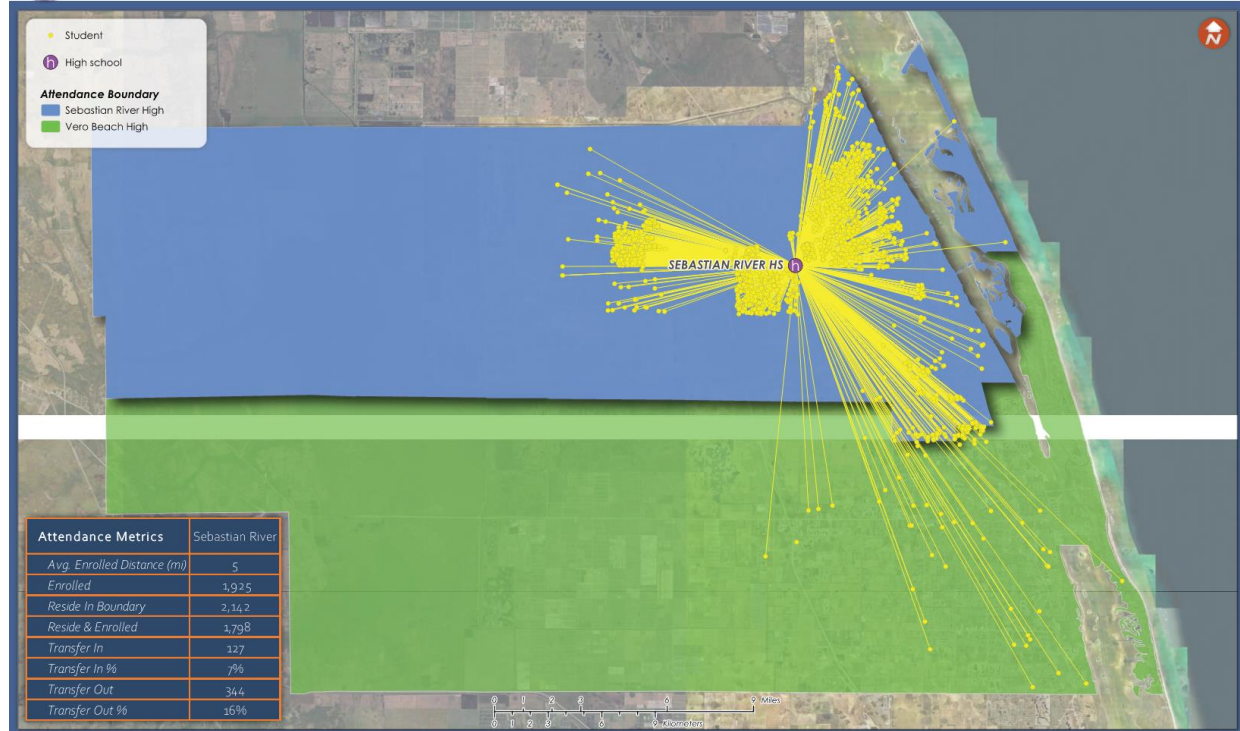
Measures of School Grade				
Component	17-18	18-19	Change	
ELA	Achievement	47	46	↓
	LG All	50	49	↓
	LG Low 25%	38	33	↓
Math	Achievement	48	36	↓
	LG All	53	40	↓
	LG Low 25%	39	29	↓
Science Achievement	59	59	→	
US His Achievement	56	47	↓	
College & Career Acc	70	61	↓	
PY Grad Rate	84	91	↑	

SCHOOL CULTURE			
18-19 Climate Surveys			
% Answering Always and Often			
Subject	Parent	Student	Staff
Success	77%	43%	NA
Safety	65%	61%	67%
Climate	66%	NA	56%

18-19 Student Attendance			
% of students with an ADA below 90%, between 90-95% and above 95%			
ADA	<90%	90-95%	>95%
% of Stud	28%	25%	47%

18-19 Average Daily Attendance	
Instructional Staff	94.8%
Students	90.5%

School District of Indian River County *Sebastian River High Students and Attendance Boundary*



Sebastian River High School School Profile



ELECTIVES

Instrumental Techniques
 Marching Band
 Intermediate Band
 Advanced Band
 Jazz Band
 Shark Choir
 Guitar 1-3
 2-D ART
 Drawing

PROGRAMS

International Baccalaureate Program: the hallmark of all academics at SRHS, which provides a global educational opportunity to all students, who have an interest in advancing into the best colleges and/or universities in the country.

AP/Honors Advance Courses is provided to all students who want to instill more rigorous and challenging courses in their academic schedule and have an opportunity to earn college-level credit by passing the AP Exam at the end of year.

Navy Junior ROTC/Embry Riddle Institute (Drone Program) is an additional learning opportunity for NJROTC students to earn dual enrollment credit in piloting unmanned aircrafts. It builds a militaristic perspective as to how we keep our country safe and secure.

Dual Enrollment is a collaborative partnership between IRSC and SRHS, which gives all students an opportunity for early academic advancement to secure a free college education, which leads to an Associate of Arts or Associate of Science degree.

The SDIRC Secondary Career & Technical Education (CTE) Programs focus on the academic, leadership and technical skills required to be successful in today's economy. The following CTE programs are offered:

Aerospace Technologies: Students are provided instruction in the foundation of knowledge and technically oriented experiences in the study of Aerospace Technologies, its effect upon our lives, and the choosing of an occupation. This program focuses on transferable skills and stresses understanding and demonstration of the technological tools, machines, instruments, materials, processes and systems in business and industry.

Applied Cybersecurity: Students are provided instruction in computer and network security, security vulnerabilities, attack mechanisms and techniques, intrusion detection and prevention, cryptographic systems, system hardening, risk identification, incidence response, penetration testing, key management, access control, and recovery.

Automotive Maintenance and Light Repair: Students are provided instruction in the current automotive industry standards, techniques, service, and repair.

Biotechnology: Students are provided instruction in the cutting-edge industry of Biotechnology and can earn an industry certification, becoming Biotechnician Assistants.

Culinary Arts: Students are provided instruction in the preparation and presentation of a variety of foods and in safe/efficient work practices.

Marketing, Management and Entrepreneurial Principles: Students are provided instruction in the technical knowledge and skills needed to prepare for further education and careers in the Marketing, Sales and Service career cluster; provides technical skill proficiency, and includes competency-based applied learning that contributes to the academic knowledge, higher-order reasoning and problem-solving skills, work attitudes, general employability skills, technical skills, and occupation-specific skills, and knowledge of all aspects of the Marketing, Sales and Service career cluster.

Nursing Assistant/Home Health Aide: Students are provided instruction in health science and can earn certification in nursing assistance.

CLUBS

Chess Club
 Rowing
 Fly Fishing Club
 It's in the Bag
 S.A.D.D.
 Student Council
 Yes, I Can Club
 Living the American Dream
 Mu Alpha Theta
 Prom Committee
 FBLA
 G.S.A. Gay Straight Alliance
 Interact Club
 Art Club
 Girls Weightlifting
 First Priority
 Enviro Eco Marine Club
 The Spanish Club
 Red Kettle Club (Salvation Army)
 Biotechnology
 Bowling
 Photography Club
 Key Club (Kiwanis)
 Excel Club (Exchange)
 Animal Lovers
 Ukulele Club
 eSports

UNICEF Club
 The Green Club
 Masterminds
 Debate
 National Honor Society
 Orchestra
 French Club
 National Honor's Society
 Dance Club
 Leadership Class (5th)
 Drama Club Class (5th)

SPORTS

Football - Boys
 Basketball - Boys/Girls
 Bowling - Boys/Girls
 Cheerleading - Girls
 Cross Country - Boys/Girls
 Golf - Boys/Girls
 Swimming - Boys/Girls
 VolleyBall - Girls
 Weight Lifting - Girls
 Lacrosse - Boys/Girls
 Softball - Girls
 Tennis - Boys/Girls
 Track & Field - Boys/Girls
 Water Polo - Boys/Girls

AWARDS

Five Star Award (17-18, 18-19)
 B school Rating (18-19)
 Gold Star Award (18-19, 19-20)
 Silver Star Award (18-19,)



Vero Beach Senior High School School Profile



ENROLLMENT										
October 2018 (Survey 2) Student Enrollment by Grade and Ethnicity										
GD	White, Non-Hisp.		Black, Non-Hisp.		Hispanic		Other		Total	
	Ct	%	Ct	%	Ct	%	Ct	%	Ct	%
9	365	51.0%	149	20.8%	149	20.8%	53	7.4%	716	
10	435	54.9%	147	18.5%	152	19.2%	59	7.4%	793	
11	390	55.3%	136	19.3%	135	19.1%	44	6.2%	705	
12	408	57.3%	134	18.8%	126	17.7%	44	6.2%	712	

October 2018 Exceptional Student Program Information	
Program	Number with Exceptionality
Exceptional Students	347
Gifted (* = <10)	182
Total	529

18-19 Least Restrictive Environment
84.49%

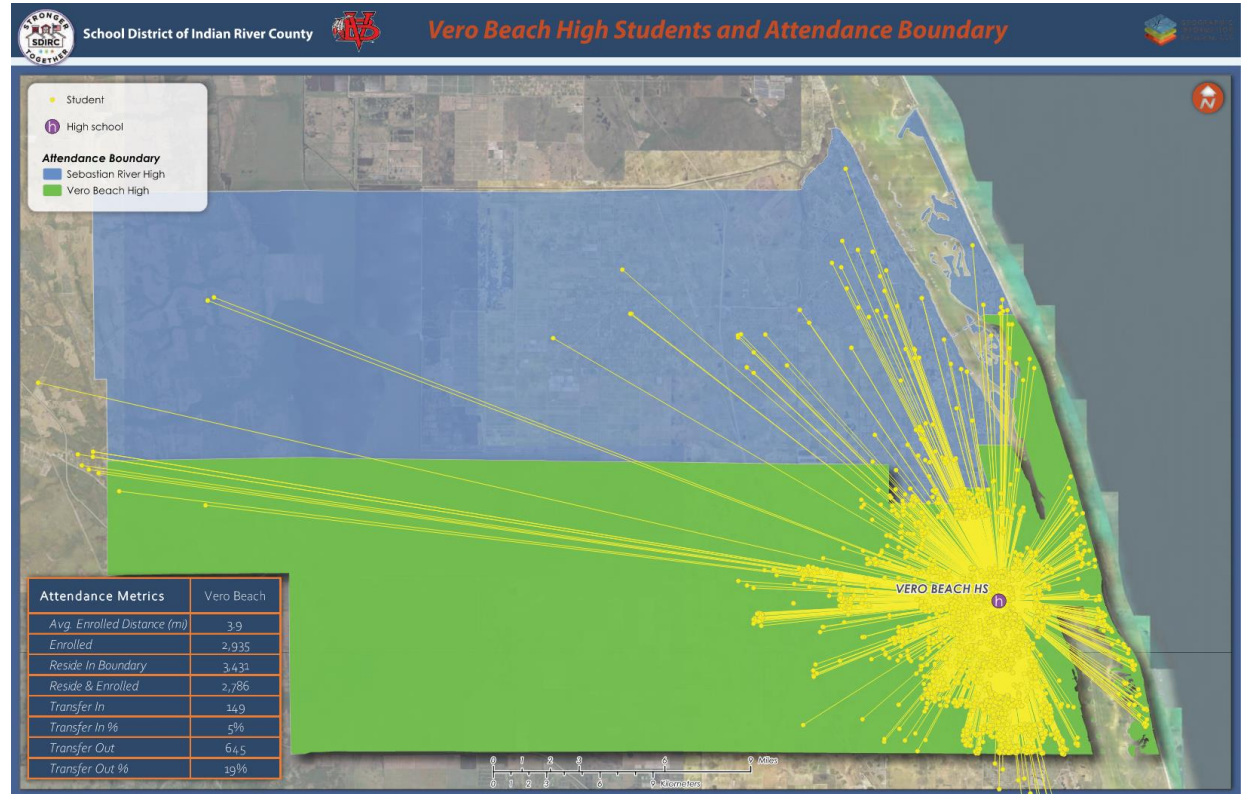
Oct 2018 English Language Learners	
Count	Percent
67	2.3%

ACADEMIC PERFORMANCE				
School Grade				
2017-2018	2018-2019	Change		
B	B	➔		
Measures of School Grade				
Component	17-18	18-19	Change	
ELA	Achievement	51	56	⬆️
	LG All	49	52	⬆️
	LG Low 25%	39	44	⬆️
Math	Achievement	45	50	⬆️
	LG All	47	54	⬆️
	LG Low 25%	36	47	⬆️
Science Achievement	61	67	⬆️	
US His Achievement	75	71	⬇️	
College & Career Acc	68	67	⬇️	
PY Grad Rate	91	93	⬆️	

SCHOOL CULTURE			
18-19 Climate Surveys			
% Answering Always and Often			
Subject	Parent	Student	Staff
Success	81%	54%	NA
Safety	76%	69%	79%
Climate	71%	NA	59%

18-19 Student Attendance			
% of students with an ADA below 90%, between 90-95% and above 95%			
ADA	<90%	90-95%	>95%
% of Stud	34%	29%	37%

18-19 Average Daily Attendance	
Instructional Staff	Students
94.2%	88.7%



Vero Beach Senior High School School Profile



PROGRAMS

At VBHS, where inspirational education lives, we provide students with an experiential education that excites, engages, and enriches through unique, hands-on, real-world learning. Critical thinking, collaboration, communication, creativity, innovation and citizenship are skills we cultivate.

VBHS is "STEM-ulating" young Minds. VBHS inspires the next generation of STEM (Science, Technology, Engineering and Math) leaders by developing a passion for STEM careers at a young age.

We are a Science, Technology, Engineering, and Mathematics campus, promoting STEM through a variety of coursework as well as through various college and career pathways.

At VBHS we are focusing on improving instruction and academic performance in science and mathematics-related subjects, with a goal of increasing the number of students who study and enter STEM careers.

VBHS's Advanced Scholar & Collegiate Academy is a premiere academy of choice that focuses on accelerated instruction with pre-advanced placement (grade 9), advanced placement, and dual enrollment(college) courses options available to prepare students for post-secondary education.

If your child enjoys science, technology, engineering, and mathematics; thrives in engaging educational settings in a flipped learning environment; and enjoys and engages in problem solving and utilizing the design process to learn, then the VBHS Collegiate Academy is right for your child!

Unique ways your child can learn and grow here:

- o Create the perfect curriculum pathway that will lead and prepare students to take AP classes
- o Project-based learning with an emphasis on science, technology, engineering, and mathematics
- o Advanced placement and dual-enrollment(college) instruction that simulates or is the collegiate experience
- o Unique internships/off-campus programs/scholarships that provide hands-on opportunities in STEM fields
- o Fosters an environment of academic rigor with high expectations for all
- o Coordinator provides support through monthly meetings
- o ASC Support Class is available for students new to accelerated academics

Advanced Placement: A program that expands high quality learning to students of all backgrounds

Dual Enrollment: Students are able to experience taking college courses on a college campus while still in high school through IRSC, Univ of FL, and Embry-Riddle

Aviation Assembly & Fabrication (20-21): Students are provided instruction in the foundational skills necessary for working in the aviation assembly and fabrication industries.

Automotive Maintenance and Light Repair: Students are provided instruction in the current automotive industry standards, techniques, service, and repair.

BioTechnology: Students are provided instruction in the cutting-edge industry of Biotechnology and can earn an industry certification, becoming Biotechnician Assistants.

Business Management and Analysis: Students are provided instruction in communication skills, forms of business ownership and organizational structures, supervisory/management functions and skills, accounting concepts and practices, business law concepts, leadership skills, business ethics, governmental regulations, human resources and management issues, financial and data analysis, database

Culinary Arts: Students are provided instruction in the preparation and presentation of a variety of foods and in safe/efficient work practices.

Digital Video Technology: Students are provided instruction in communication skills, leadership skills, human relations and employability skills, safe and efficient work practices, and preparation to assume responsibility for the overall production of digital video activities (e.g., scripts, lighting, camera operation, electronic news gathering, field/studio production, video editing).

Drafting: Students are provided instruction in the preparation in freehand sketching, drafting by hand and computer and 3D modeling

Marketing, Management, & Entrepreneurial Principles: Students are provided instruction in the technical knowledge and skills needed to prepare for further education and careers in the Marketing, Sales and Service career cluster; provides technical skill proficiency, and includes competency-based applied learning that contributes to the academic knowledge, higher-order reasoning and problem-solving skills,

Nursing Assistant/Home Health Aide: Students are provided instruction in health science and can earn certification in nursing assistance.

Web Application Development (20-21): Students are provided instruction in the fundamentals of programming and software development; procedural and object-oriented programming; creating web-based applications, including testing, monitoring, debugging, documenting, and maintaining applications.



Vero Beach Senior High School School Profile



ELECTIVES

2D and 3D Art	HSE Direct Study	Weight Training
Accounting Applications	Humanities	World Religions
AP Art	Individual and Dual Sports	
AP French	Industry COOP ED-OJT	
AP Human Geography	Instrumental Techniques	
AP Psychology	Intro to Aeronautical Science	
AP Spanish	Introduction to Social Sciences	
Aerospace Science	Jazz Ensemble	
African-American History	Journalism	
AP Computer Science Principles	Legal Aspects of Business	
Automotive Maintenance & Light Repair	Management of Human Resources	
Band	Music Theory	
Basketball	Nursing Assistant	
Carpentry	Orchestra	
Ceramics and Pottery	Paint	
Chorus	Peer Counseling	
Comprehensive Fitness	Power Weight Training	
Comprehensive Law	Prep for Entrepreneurship	
Constitutional Law	Private Pilot Operations	
Digital Information Technology	Psychology	
Digital Video Technology	Self-Determination	
Drawing	Social and Personal Skills	
Eurythmics	Sociology	
Executive Internship	Spanish	
Fitness Issues for Adolescents	Student Success	
Fitness Lifestyle Design	Team Sports	
French	Theatre	
Health - Anatomy and Physiology	Transportation OJT	
Home Health Aide	Unmanned Aircraft Systems	
HOPE	Vocal Ensemble	
Hospitality and Tourism Direct Study	Volleyball	



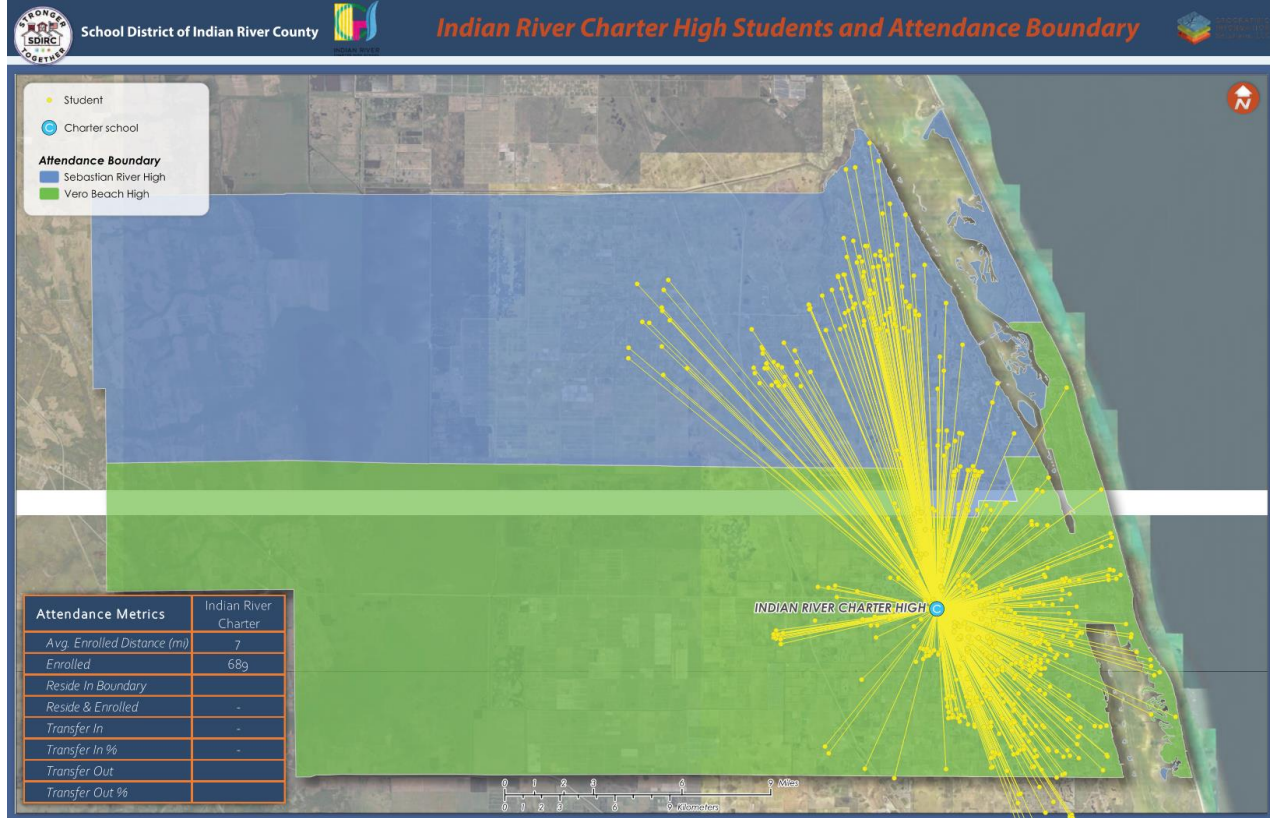
Vero Beach Senior High School School Profile



CLUBS		SPORTS	AWARDS
Vero's Helping Hearts Club	Q+ (Gender Acceptance) Club	Baseball - Boys	Advanced Ed Accreditation (2019)
Current Events Club	Green Team (Environmental Club)	Basketball - Boys/Girls	Gold & Silver School (18-19, 19-20)
International Club	H.O.S.A.	Cheerleading - Girls	5 Star School (2017, 2018, 2019)
TED-ED Student talks	Jam Club	Cross Country - Boys/Girls	"B" School - FLDOE (17-18, 18-19)
Youth Vote Initiative Club	Key Club (Dance Marathon)	Flag Football - Girls	Regeneron Science Talent Search
Tri-M Music Honor Society	Masterminds	Football - Boys	2020 Scholar School
Forces of Fusion Dance Team	Math Team/Math Competition	Golf - Boys/Girls	
Table Tennis	Model United Nations	Lacrosse - Boys/Girls	
#VBHS Magazine	Moot Court/ Mock Trial	Soccer - Boys/Girls	
Academic Games	Multicultural Club	Softball - Girls	
Arrowhead/Yearbook	Nintendopamine	Swimming - Boys/Girls	
Art & Mural Club MC	Red Cross Club	Tennis - Boys/Girls	
Arts and Crafts Club	Red Kettle Club (Student Arm of Salvation Army)	Track - Boys/Girls	
Beach Volleyball	Republican Youth Group	Volleyball - Girls	
Best Buddies @ VBHS	Rowing Club	Weightlifting - Girls	
Campus Life	Sailing Club	Wrestling - Boys	
Chieftain	Science Research		
Coding Club	S.T.A.R.S.		
Comedy Club	Student Government		
Crossover Mission Club	Tribe Tutors		
D.A.R.E./S.A.D.D	The Vero Digital (Magazine)		
Dance Marathon	Yoga Club		
Debate Club	Young Adult Book Club		
Drama Club	Curlz		
Exchange Club			
Flavorz Latin Dance Club (Crew)			
F.R.I.E.N.D.S. (Finding Resources in Every Night & Day Situations)			



Indian River Charter High School School Profile



Wabasso School School Profile

